



TOURISM INDICATORS

AUSTRALIA

EMBARGO: 11:30AM (CANBERRA TIME) FRI 12 MAY 2000

C O N T E N T S

	<i>page</i>
Notes	2
Key tourism indicators	3
In brief	5
FEATURE ARTICLE	
Tourist Accommodation Developments	7
Survey of Tourist Accommodation—Annual Comparisons	9
TABLES	
List of tables	12
Tourist accommodation	14
International tourism	52
ADDITIONAL INFORMATION	
Explanatory notes	70
Appendix: Index to feature articles, 1996–99	75
Glossary	77

- For further information about these and related statistics, contact Dianne Bourke on Canberra 02 6252 6348, or the National Information Service on 1300 135 070.

NOTES

FORTHCOMING ISSUES

<i>ISSUE (Quarter)</i>	<i>EXPECTED RELEASE DATE</i>
March 2000	11 August 2000
June 2000	10 November 2000

ABOUT THIS PUBLICATION

This publication brings together tourism data from the ABS and some non-ABS sources to provide a quarterly snapshot for users of tourism statistics. The main ABS sources used are the quarterly Survey of Tourist Accommodation and the monthly Overseas Arrivals and Departures collection. This publication supplements data already released from these collections.

SYMBOLS AND OTHER USAGES

ABS	Australian Bureau of Statistics
ACT	Australian Capital Territory
Aust.	Australia
CPI	Consumer Price Index
DIMA	Department of Immigration and Multicultural Affairs
n.a.	not available
n.p.	not published
NSW	New South Wales
NT	Northern Territory
NZ	New Zealand
OAD	Overseas Arrivals and Departures Collection
Qld	Queensland
SA	South Australia
STA	Survey of Tourist Accommodation
Tas.	Tasmania
UK	United Kingdom
USA	United States of America
Vic.	Victoria
WA	Western Australia
—	nil or rounded to zero
. .	not applicable

W. McLennan
Australian Statistician

KEY TOURISM INDICATORS

	Unit	Period	Latest figures	Percentage change on	
			Value	Previous period	Corresponding period last year
Tourist accommodation—supply and demand(a)					
Licensed hotels, motels, guest houses and serviced apartments					
Establishments	no.	Dec qtr 1999	3 779	1.3	2.6
Guest rooms/units	'000	Dec qtr 1999	190.1	1.7	4.4
Bed spaces	'000	Dec qtr 1999	559.7	1.7	4.3
Room nights occupied	'000	Dec qtr 1999	10 413.6	0.2	5.1
Room occupancy rate(b)	%	Dec qtr 1999	59.7	-1.8	0.5
Guest nights	'000	Dec qtr 1999	18 490.1	-0.7	5.3
Guest arrivals	'000	Dec qtr 1999	8 312.7	0.1	4.4
Takings from accommodation	\$m	Dec qtr 1999	1 112.4	3.2	6.6
Caravan parks					
Establishments	no.	End Dec 1998	2 719	..	1.3
Powered sites and cabins	no.	End Dec 1998	225 868	..	1.9
Holiday flats, units and houses					
Letting Entries	no.	End Dec 1998	1 471	..	9.2
Flats, units and houses	no.	End Dec 1998	35 965	..	4.1
Visitor hostels					
Establishments	no.	End Dec 1998	616	..	23.2
Bed spaces	no.	End Dec 1998	38 294	..	17.8
Tourist accommodation construction					
Hotels, etc. approved(c)	\$m	Feb 2000	41.5	-50.8	14.6
Hotels, etc. commenced(d)	\$m	Dec qtr 1999	235.2	26.4	-29.5
Hotels, etc. under construction(d)	\$m	Dec qtr 1999	1 529.6	-7.8	-4.4
Hotels, etc. completed(d)	\$m	Dec qtr 1999	378.2	-4.8	16.3
Domestic tourism(e)					
Number of overnight trips	'000	Year end Sep 1999	73 798	n.a.	n.a.
Number of visitor nights	'000	Year end Sep 1999	296 834	n.a.	n.a.
International visitor arrivals					
Number of visitor arrivals(f)	'000	Feb 2000	439.2	21.7	10.2
Number of visitor arrivals(f)	'000	Dec qtr 1999	1 274.4	16.2	8.0
Number of visitor arrivals(f)	'000	1999	4 459.5	..	7.0
Number of person days(g)	'000	Dec qtr 1999	37 123.8	18.4	17.3
Median intended length of stay(g)	days	Dec qtr 1999	11.0	2.8	0.9
Expenditure by international visitors(h)	\$m	Year end Sep 1999	8 986.0	..	16.1
International visitor nights(h)	'000	Year end Sep 1999	106 436	..	13.6
Australian departures					
Short-term departures(f)	'000	Jan 2000	246.9	-20.2	6.1
Short-term departures(f)	'000	Dec qtr 1999	815.6	-9.2	-3.2
Short-term departures(f)	'000	1999	3 210.0	..	1.5
Number of person days(g)	'000	Dec qtr 1999	27 162.0	-7.8	1.6
Median intended length of stay(g)	days	Dec qtr 1999	17.4	13.0	8.1

(a) *Tourist Accommodation, Australia* (ABS Cat. no. 8635.0).

(b) Change is shown in terms of percentage points.

(c) *Building Approvals, Australia* (ABS Cat. no. 8731.0).

(d) *Building Activity, Australia* (ABS Cat. no. 8752.0).

(e) Bureau of Tourism Research, *Results of the National Visitor Survey*.

(f) *Overseas Arrivals and Departures, Australia* (ABS Cat. no. 3401.0).

(g) Unpublished data, *Overseas Arrivals and Departures*.

(h) Bureau of Tourism Research, *International Visitor Survey*. Excludes international airfares and inclusive package tours purchased outside Australia.

...continued

KEY TOURISM INDICATORS—continued

			<u>Latest figures</u>	<u>Percentage change on</u>	
	<i>Unit</i>	<i>Period</i>	<i>Value</i>	<i>Previous period</i>	<i>Corresponding period last year</i>
Retail turnover(a)					
Hospitality and services					
Hotels and licensed clubs	\$m	Feb 2000	1 145.1	-5.5	6.0
Cafes and restaurants	\$m	Feb 2000	637.8	-3.3	16.8
Selected services	\$m	Feb 2000	175.2	-7.3	3.8
Price index(b)					
Holiday travel and accommodation	1989-90=100	Mar qtr 2000	118.3	2.8	2.5
Employment and earnings					
Accommodation, cafes and restaurants					
Number employed(c)	'000	Feb 2000	439.7	-0.2	11.2
Average weekly hours worked(c)	hours	Feb 2000	33.1	-0.9	3.1
Proportion employed part-time(c)(d)	%	Feb 2000	44.9	1.1	-4.1
Average total weekly earnings(e)	\$	Nov 1999	367.1	5.8	5.5
Female/male ratio of average total full-time weekly earnings(c)(d)	%	Nov 1999	0.90	2.3	2.3
Unemployment rate(c)(d)					
Worked full time for two weeks or more in the last two years in accommodation, cafes and restaurants	%	Feb 2000	5.3	26.2	6.0
Balance of payments(f)					
Travel credits	\$m	Dec qtr 1999	3 104	-3.5	13.8
Travel debits	\$m	Dec qtr 1999	-2 333	-7.9	2.2
Balance on travel services	\$m	Dec qtr 1999	771	12.6	73.3
Exchange rates(g)					
United States dollar	per \$A	End Mar 2000	0.6161	-3.7	-1.8
Japanese yen	per \$A	End Mar 2000	65.21	-5.1	-14.0
Euro	per \$A	End Mar 2000	0.6462	-2.0	9.5

(a) *Retail Trade, Australia* (ABS Cat. no. 8501.0).

(b) *Consumer Price Index* (ABS Cat. no. 6401.0); base year: 1989-90=100.

(c) *Labour Force, Australia* (ABS Cat. no. 6203.0).

(d) Change is shown in terms of percentage points.

(e) *Average Weekly Earnings, States and Australia* (ABS Cat. no. 6302.0).

(f) *Balance of Payments, Australia* (ABS Cat. no. 5302.0).

(g) *Average of Daily Exchange Rates, Australia* (ABS Cat. no.5654.0)

IN BRIEF

SURVEY OF TOURIST ACCOMMODATION (STA) UPDATE

The scope for the STA has been expanded for all quarters in the year 2000 as part of the triennial collection strategy. In addition to the 4,000 licensed hotels, motels, guest houses and serviced apartments with 15 or more rooms that are in the ongoing quarterly collection across all Australian States and Territories, the STA 2000 will also include:

- Caravan parks with 40 or more powered sites (1,900 establishments);
- Visitor hostels with 25 or more beds (400) and
- Holiday Flats and Units of letting entities with 15 or more units (30–35,000 units and 700–800 letting entities).

The March quarter 2000 results and the first release of the triennial data will be on 7 July in the standard STA products (*Survey of Tourist Accommodation, Australia* (ABS Cat. no. 8635.0) and State products).

CRC ONLINE BOOKSHOP

ABS and CRC for Sustainable Tourism have entered an arrangement for electronic delivery of ABS publications of interest to tourism users through their on-line bookshop. It can be accessed through their web-site WWW.crctourism.com.au

SERVICE INDUSTRIES SURVEY PROGRAM

For 2000-2001 the ABS Service Industries Survey program is proposing to cover selected tourism and hospitality related industries. The following industries are likely to be approached:

- Accommodation (ANZSIC 5710)
- Cafes and restaurants (ANZSIC 5730)
- Gambling industries (including casinos) (ANZSIC 9321, 9322, 9329)
- Pubs, Taverns and Bars (ANZSIC 5720)
- Clubs (hospitality) (ANZSIC 5740)
- Sport (ANZSIC 9311, 9312, 9319)

Results of these collections will be available during 2002. In addition, the following service industry products may be of interest to users:

- Cafes and Restaurants, Australia, 1998–99 (ABS Cat. no. 8655.0) will be released in July 2000.
- Casinos, Australia (ABS Cat. no. 8683.0), an annual publication was released in December 1999 for the reference period 1998–99.

For further information about the ABS Service Industries Survey program, contact Graham Boxsell on Canberra 02 6252 5633.

THE ABS AND TAX REFORM

The changes associated with The New Tax System will affect a wide range of data series produced by the ABS. These changes will also affect the manner in which ABS statistics are produced. For a detailed discussion of these effects, please see:

Information Paper: ABS Statistics and The New Tax System (Cat. no. 1358.0), released on 26 April 2000.

Information Paper: Price Indexes and The New Tax System (Cat. no. 6425.0) was released on 3 May 2000 and describes in more detail the implications for the Consumer Price Index (CPI) and the Producer Price Indexes (PPIs).

For further information contact Peter Comisari on Canberra 02 6252 7218.

REGIONAL POPULATION GROWTH

Approximately 60% of Australia's 627 Local Government Areas (LGAs) increased their population in the year to June 1999. Most (72%) of Australia's population growth occurred in the State and Territory capital cities. At June 1999, 64% of Australians resided in capital cities compared to 63% in 1994. Melbourne, Adelaide and Perth were each home to 73% of their respective State populations compared to 63% for Sydney, 46% each for Brisbane and Darwin and 41% for Hobart.

Further information is available in *Regional Population Growth, Australia, 1998-99* (Cat. no. 3218.0) which contains Statistical Local Area and Local Government Area population estimates.

POPULATION ESTIMATES AVAILABLE FOR POSTAL AND OTHER AREAS

Population estimates by age and sex are available for 1996 Census Collection Districts (CD) and CD-derived Postcodes (Postal Areas), or aggregations thereof. These have been calculated for 30 June 1996, 1997 and 1998, with 1999 data available in mid-2000. For a particular year, prices range from \$100 for NT or ACT postal areas to \$1,100 for all postal areas in Australia.

For more information on the above Demographic Statistics contact Sue Taylor, Demography Section ABS Canberra 02 6252 6241

FEATURE ARTICLE

TOURIST ACCOMMODATION DEVELOPMENTS

KEY FINDINGS

The ABS recently collected information on tourist accommodation development projects with an approved building value of \$2 million or more. To be in scope of the survey a project must have been approved prior to December 31, 1999. Results from the survey showed that:

- projects completed in the 12 months ended 31 December 1999 had a total value of \$1,580 million. They included 6,541 hotel, motel rooms and serviced apartments (including 1,132 with a star grading of 5) and 657 holiday flats and units.
- in the 12 month periods ending 31 December 2000 and 31 December 2001, the number of additional hotel, motel rooms and serviced apartments expected to be completed are 6,669 and 1,104 respectively.
- there were 14,314 hotel, motel rooms and serviced apartments completed or planned to be completed in the three year period January 1999 to December 2001. Of those with a known star grading, 25% are star grade 5 and 59% star grade 4.

The following table shows details at 31 December 1999 of new accommodation:

NEW ACCOMMODATION DEVELOPMENTS—31 DECEMBER 1999

<i>Type of accommodation(a)</i>	<i>Completed by</i>		<i>Expected to be completed by</i>	
	<i>31 Dec 1999</i>	<i>31 Dec 2000</i>	<i>31 Dec 2001</i>	<i>31 Dec 2001</i>
Number of rooms, etc. (excluding refurbishments)				
Hotels, motels, serviced apartments	6 541	6 669	1 104	—
Star grade 2	103	151	—	—
Star grade 3	828	933	36	—
Star grade 4	3 892	3 257	461	—
Star grade 5	1 132	1 874	228	—
Unknown(b)	586	454	379	—
Holiday flats and units	657	451	—	—
Value of projects (including refurbishments) (\$m)				
Total value of all projects	1 580	2 069	199	—

(a) For those developments not yet assessed star grading refers to expected star grading.

(b) These projects were either not to be graded or their grading was withheld due to confidentiality.

SURVEY NOTES

The Tourist Accommodation Developments Survey is an annual survey conducted by the Australian Bureau of Statistics primarily for the Tourism Forecasting Council in order to improve the quality of information available on, and forecasts of, tourist accommodation developments.

A tourist accommodation development includes new work and/or alterations and additions to establishments which provide short-term accommodation (i.e. for periods of less than two months) to the general public.

SURVEY NOTES *continued*

Developments may have either been approved but not yet commenced, be still under construction at the end of 1999 or have been completed in the 1999 calendar year to be in scope of the 1999 survey. The project must also be expected to be completed within two years of the reference year.

INQUIRIES AND
UNPUBLISHED DATA

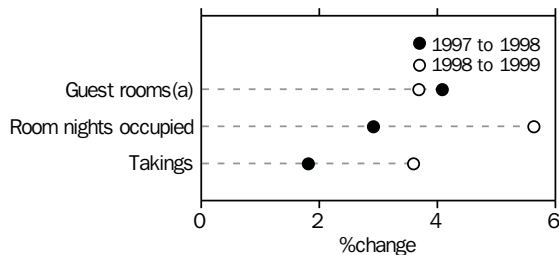
For more details and information about the availability of other data from the survey, contact Tony Bammann on 08 8237 7316.

SURVEY OF TOURIST ACCOMMODATION—ANNUAL COMPARISONS

INTRODUCTION

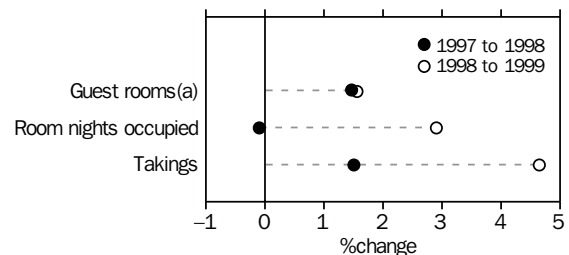
This article examines accommodation supply and demand over the last three years for hotels, motels, guest houses and serviced apartments with 15 or more rooms. It is based on data collected from the Survey of Tourist Accommodation (STA) showing that 1999 was a year of significant growth in accommodation demand.

LICENSED HOTELS—1997 to 1999



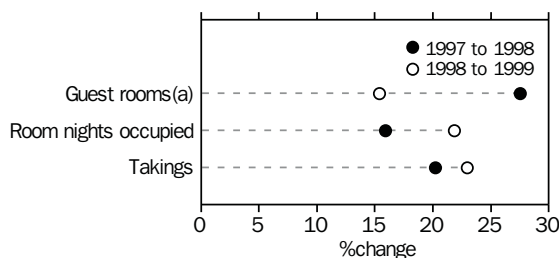
(a) at 31 December.

MOTELS AND GUEST HOUSES—1997 to 1999



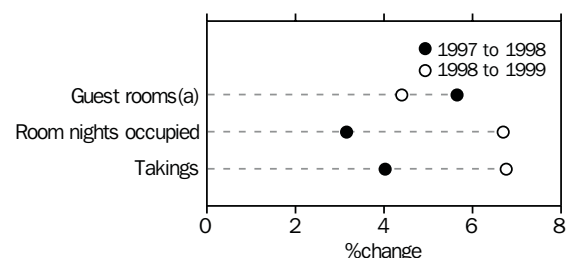
(a) at 31 December.

SERVICED APARTMENTS—1997 to 1999



(a) at 31 December.

ALL ACCOMMODATION TYPES—1997 to 1999



(a) at 31 December.

SUPPLY

At the end of December 1997 there were 3,587 accommodation establishments with 15 or more rooms, compared with 3,779 at the end of December 1999. This represents annual increases of 3% to December 1998 (at 3,685 establishments) and December 1999.

Over 80% of the growth in accommodation establishments since December 1997 has been in NSW (57), Queensland (53) and Victoria (44). Tasmania showed minimal growth and the Northern Territory showed no growth.

Over the two years to December 1999, serviced apartments showed marked growth in guest rooms of 47%, compared with the growth in licensed hotels of 8% and motels and guest houses of 3%. At the end of December 1997 serviced apartments accounted for 13% of all accommodation establishments and 12% of all guest rooms. By December 1999, this sector had grown to 600 establishments and 30,644 guest rooms, accounting for 16% of all establishments and room capacity.

SUPPLY *continued*

Licensed hotels accounted for 21% of all establishments and 40% of all guest rooms at the end of 1997, and by the end of 1999 they comprised 20% of establishments and 39% of all guest rooms.

Motel and guest houses contributed 66% of establishments and 48% of guest rooms at the end of 1997, whereas two years later, this had dropped to 64% and 45% respectively.

DEMAND

In the 12 months of 1999, demand outstripped supply with room nights occupied increasing by 7% to 39.8 million, while the number of guest rooms grew by 4% to reach 190,079. This is in contrast to what happened in the previous 12 months from 1997 to 1998 where room nights occupied increased by 3% while the number of guest rooms rose by 6%.

Of the three types of accommodation establishments, strongest growth during 1999 occurred in demand for serviced apartments with room nights occupied increasing by 22% over 1998 to 6.3 million. Demand for licensed hotels grew by 6% (to 16.6 million) and motels and guest houses increased by 3% (to 16.9 million). The growth in demand between 1997 and 1998 was much slower—with a 16% increase in room nights occupied for serviced apartments, a 3% increase for licensed hotels, and a decrease of less than 1% for motels and guest houses.

The average room occupancy rate was 58.9% in 1997. This dropped to 57.7% in 1998 and then rose again to 58.7% in 1999.

This pattern remained the same for licensed hotels and motels and guest houses. Licensed hotels had average occupancy rates from 1997 to 1999 of 63.2%, 61.6% and 63.1%. Motels and guest houses had occupancy rates over the three years of 54.5%, 53.7% and 54.4%. Serviced apartments showed a different pattern with occupancy rates of 62.3% in 1997, 60.5% in 1998 which then remained lower in 1999 to be 60.4%, reflecting the larger increase in supply when compared with the increases in demand.

TAKINGS

The 1998 takings (\$3.9 billion) were 4% greater than in 1997 (\$3.7 billion), while takings reported in 1999 were \$4.1 billion, an increase of 7% compared to 1998.

Again, serviced apartments showed the strongest growth compared with other accommodation types, with total takings up 20% from 1997 to 1998 and 23% from 1998 to 1999 to \$693 million. The market share of serviced apartments grew from 13% in 1997 to 17% in 1999, although they still remain the smallest sector. Hotel takings were up 2% from 1997 to 1998 and 4% from 1998 to 1999 to \$2 billion, while takings from motels and guest houses rose 2% from 1997 to 1998 and 5% from 1998 to 1999. During 1999, licensed hotels had 51% of market share in terms of takings while motels and guest houses had 32%.

EMPLOYMENT

Employment in tourist accommodation establishments at the end of 1999 (115,152 persons) increased by 2% since December 1998, in contrast to a decrease in employment between 1997 to 1998 of just less than half a percent—which occurred mainly in Victoria.

Strongest growth in employment from 1998 to 1999 was recorded in NSW, Victoria and Tasmania (3%, 4% and 3% respectively). South Australia, Western Australia and the Northern Territory all experienced small increases. Decreases were recorded in both Queensland and the ACT, both down by 0.2%.

For further information about these statistics contact Paull Hoffmann on Brisbane 07 3222 6201.

LIST OF TABLES

Page

TOURIST ACCOMMODATION

Australia	1	Hotels, motels, guest houses and serviced apartments, time series	17
	2	Accommodation establishments, December quarter 1998 and December quarter 1999	18
	3	Average takings, accommodation establishments, December quarter 1998 and December quarter 1999	19
New South Wales	4	Hotels, motels, guest houses and serviced apartments, time series	21
	5	Accommodation establishments, December quarter 1998 and December quarter 1999	22
	6	Takings, accommodation establishments, December quarter 1998 and December quarter 1999	23
Victoria	7	Hotels, motels, guest houses and serviced apartments, time series	25
	8	Accommodation establishments, December quarter 1998 and December quarter 1999	26
	9	Takings, accommodation establishments, December quarter 1998 and December quarter 1999	27
Queensland	10	Hotels, motels, guest houses and serviced apartments, time series	29
	11	Accommodation establishments, December quarter 1998 and December quarter 1999	30
	12	Takings, accommodation establishments, December quarter 1998 and December quarter 1999	31
South Australia	13	Hotels, motels, guest houses and serviced apartments, time series	33
	14	Accommodation establishments, December quarter 1998 and December quarter 1999	34
	15	Takings, accommodation establishments, December quarter 1998 and December quarter 1999	35
Western Australia	16	Hotels, motels, guest houses and serviced apartments, time series	37
	17	Accommodation establishments, December quarter 1998 and December quarter 1999	38
	18	Takings, accommodation establishments, December quarter 1998 and December quarter 1999	39
Tasmania	19	Hotels, motels, guest houses and serviced apartments, time series	41
	20	Accommodation establishments, December quarter 1998 and December quarter 1999	42
	21	Takings, accommodation establishments, December quarter 1998 and December quarter 1999	43

			Page
Northern Territory	22	Hotels, motels, guest houses and serviced apartments, time series	45
	23	Accommodation establishments, December quarter 1998 and December quarter 1999	46
	24	Takings, accommodation establishments, December quarter 1998 and December quarter 1999	47
Australian Capital Territory	25	Hotels, motels, guest houses and serviced apartments, time series	49
	26	Accommodation establishments, December quarter 1998 and December quarter 1999	50
	27	Takings, accommodation establishments, December quarter 1998 and December quarter 1999	51
INTERNATIONAL TOURISM			
Short-term overseas visitors	28	Arrivals, by country of residence	55
	29	Arrivals by country of residence, original, seasonally adjusted and trend, January 1999 to December 1999	56
	30	Arrivals by main purpose of journey and country of residence, persons	57
	31	Arrivals by main purpose of journey and country of residence, person days	58
	32	Arrivals by intended length of stay and main purpose of journey, selected countries of residence	59
	33	Arrivals by age group by country of residence and main purpose of journey	61
	34	Departures by State or Territory in which most time was spent and country of residence	63
Australian resident departures	35	Short-term trips abroad by country of intended stay	66
	36	Short-term trips abroad by main purpose of journey, persons	67
	37	Short-term trips abroad by main purpose of journey, persons days	68
	38	Short-term trips abroad by country of intended stay, original, seasonally adjusted and trend, January 1999 to December 1999	69

TOURIST ACCOMMODATION

INTRODUCTION

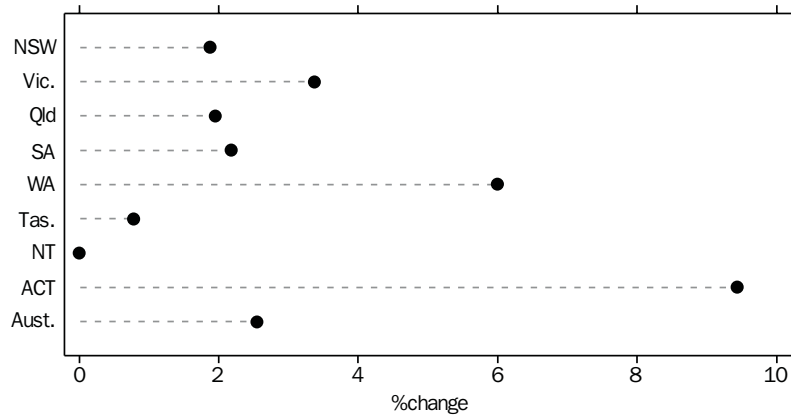
The statistics presented in this section are from the quarterly Survey of Tourist Accommodation (STA). The data presented are for hotels, motels, guest houses and serviced apartments with 15 or more rooms or units.

AUSTRALIA

Establishments The number of accommodation establishments increased by nearly 3% (94) to reach 3,779 during the 12 months to the December quarter 1999. Serviced apartments contributed 51% to this growth, motels and guest houses 29%, and licensed hotels 20%. The increase during this period in the number of serviced apartments of 9% (to 600), was 3 times greater than the percentage increase for all establishments. Queensland, Victoria and Western Australia contributed 83% of the growth in serviced apartments.

The ACT recorded the largest percentage growth of establishments during the 12 months to the December quarter 1999 of 9% to reach 58. The strongest contributors in absolute terms to the 94 new establishments were New South Wales (24), Victoria (23), Queensland and Western Australia (both with 18). The number of serviced apartments increased across all States and Territories since the December quarter 1998, with the exception of Tasmania where numbers remained the same.

NUMBER OF ESTABLISHMENTS—Dec qtr 1998–Dec qtr 1999



Guest rooms The number of guest rooms increased by over 4%, or 8,018 to 190,079 since the December quarter 1998. Serviced apartments accounted for 51% (4,086) of the increase to reach 30,644 guest rooms. While the number of guest rooms in serviced apartments were up by 15%, other accommodation types recorded smaller increases—licensed hotels up by 4% to 73,416, and motels and guest houses up by 2% to 86,019.

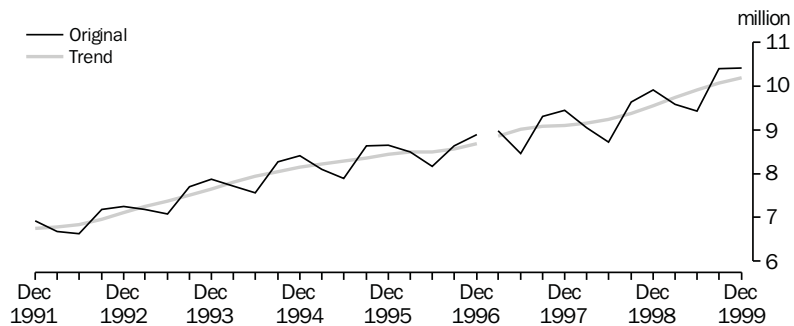
Over the 12 months to the December quarter 1999, the average number of guest rooms per establishment increased by 2% to 50.

Room nights occupied

Room nights occupied were 10.4 million in original terms during the December quarter 1999, an increase of 5% (509,200) compared to the same period last year. Average nightly rooms occupied per establishment increased by 2% to 30.0.

In trend terms, there has been a continuing upward movement of quarterly room nights occupied from 6.7 million in the December quarter 1991 to 10.2 million in the most recent December quarter. The trend estimate during the December quarter 1999 increased by 1% over the previous quarter, and by 7% on the December 1998 quarter.

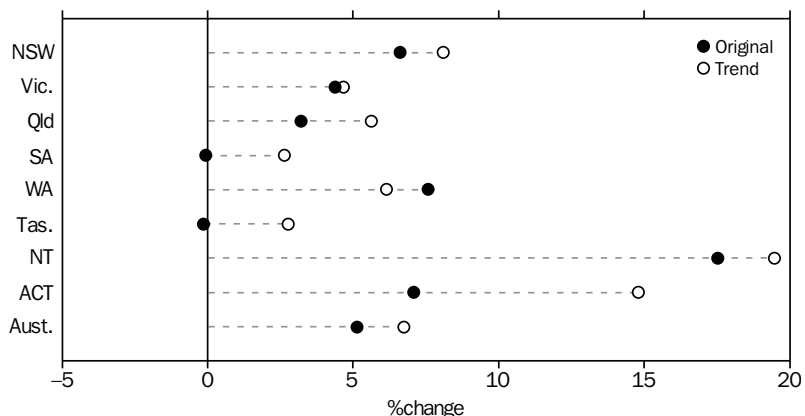
QUARTERLY ROOM NIGHTS OCCUPIED, Aust



Notes: There is a break in series between December quarter 1996 and March quarter 1997 because of scope changes to STA. Refer to Explanatory Notes, paragraphs 3—7.

Between the December quarters of 1998 and 1999 all States and Territories excluding South Australia and Tasmania showed increases in the number of room nights occupied with strongest proportional growth (in original terms) in the Northern Territory (up 18%), Western Australia (up 8%), New South Wales and the Australian Capital Territory (both up 7%). NSW showed the largest growth in absolute terms—up 212,600 (7%) in original terms and 252,800 (8%) in trend terms.

QUARTERLY ROOM NIGHTS OCCUPIED—Dec qtr 1998—Dec qtr 1999

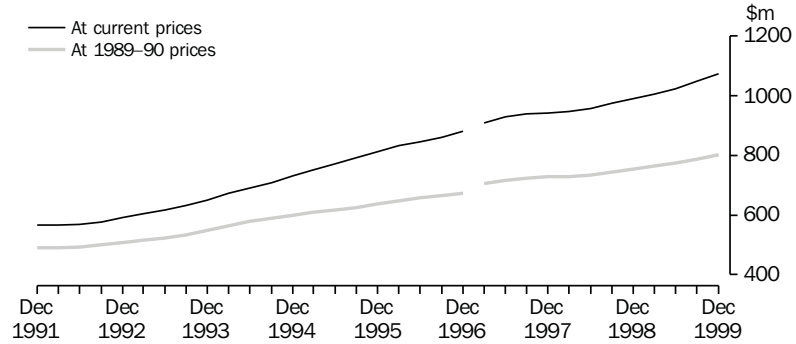


Guests There were 1.8 nightly guests per occupied room during the December quarters 1998 and 1999. This number was higher for serviced apartments at 2.2, lower for licensed hotels at 1.6 and the same for motels and guest houses with 1.8. During the December quarter 1999, the average length of stay of guests was 2.2 days, the same as the previous December quarter. Guests stayed longer in serviced apartments (3.7 days), than in licensed hotels (2.3 days) and motels and guest houses (1.8 days).

Takings from accommodation

Takings from accommodation continue to reach new levels in both original and trend series. December quarter 1999 takings of \$1,112.4 million in original terms, shows a 7% increase on the previous December quarter. The trend estimate for takings in the December quarter 1999 of \$1,074.3 million, although slightly lower than the original series, was above \$1 billion in current price terms for the fourth consecutive quarter in a row. The trend series for takings in both constant and current prices has continued a steady upward movement since the March quarter 1991.

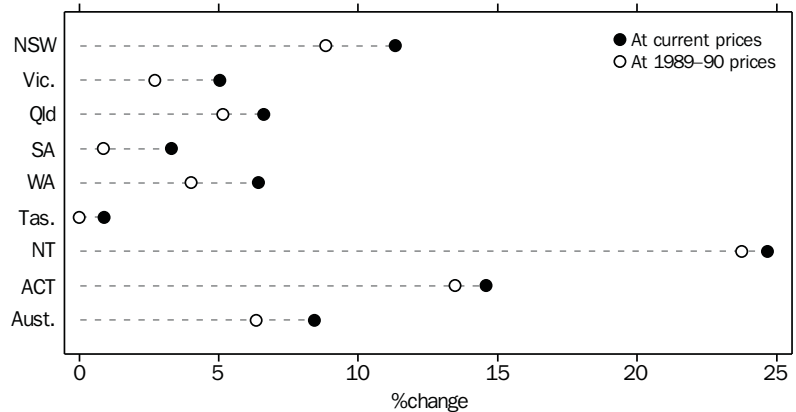
QUARTERLY TAKINGS FROM ACCOMMODATION, Aust: Trend



Note: There is a break in series between December quarter 1996 and March quarter 1997 because of scope changes to the STA. Refer to Explanatory Notes, paragraphs 3-7.

All States and the Territories excluding Tasmania recorded positive growth in quarterly takings during the December quarter 1999 compared with the December quarter 1998. The Northern Territory had the greatest percentage growth for quarterly takings in trend terms in that period (up nearly 25% in current prices and 24% in constant prices).

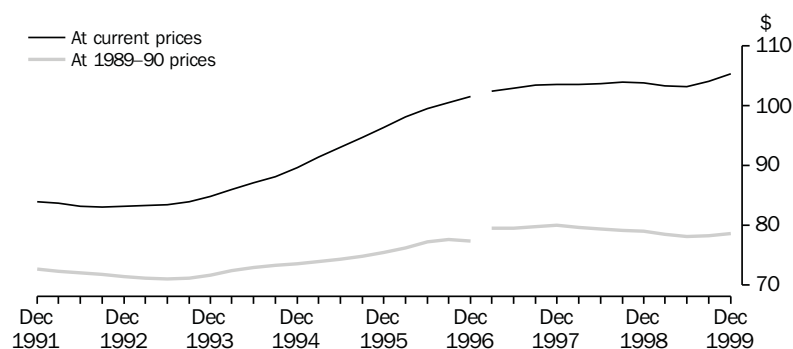
QUARTERLY TAKINGS: Trend—Dec qtr 1998—Dec qtr 1999



Average takings per room night occupied

In December quarter 1999, the trend estimate for average takings per room night occupied in current price terms increased to the highest level ever to be in excess of \$105. In constant price terms, the average takings of \$79 per room night occupied for the December quarter 1999 reflects slight gains in the two most recent quarters after seven consecutive quarters of gradual decline.

AVERAGE TAKINGS PER ROOM NIGHT OCCUPIED, Aust: Trend



Note: There is a break in series between December quarter 1996 and March quarter 1997 because of scope changes to the STA. Refer to Explanatory Notes, paragraphs 3-7.

The trend estimate in current price terms for the September quarter 1999 show that only South Australia increased its average takings per room night occupied compared to the September quarter 1998. Victoria has the highest average takings per room night occupied of \$113, while Tasmania remains as the State with the lowest average of \$86.

1

HOTELS, MOTELS, GUEST HOUSES AND SERVICED APARTMENTS—AUST.(a)

	Room nights occupied(b)			Takings at current prices(b)			Takings at average 1989-90 prices(c)		
	Original	Seasonally adjusted	Trend	Original	Seasonally adjusted	Trend	Original	Seasonally adjusted	Trend
	'000	'000	'000	\$m	\$m	\$m	\$m	\$m	\$m
1990	25 755.7	25 761.9	25 678.6	2 138.3	2 137.8	2 124.5	1 924.4	1 924.6	1 914.9
1991	26 417.8	26 383.5	26 359.0	2 211.7	2 207.4	2 205.8	1 929.0	1 925.5	1 923.4
1992	27 736.6	27 638.6	27 680.4	2 307.3	2 298.2	2 305.1	1 993.5	1 985.8	1 990.9
1993	29 834.6	29 827.5	29 792.1	2 503.1	2 501.4	2 501.3	2 124.0	2 122.6	2 123.4
1994	31 948.5	31 946.0	31 928.3	2 807.9	2 805.9	2 802.8	2 336.5	2 335.4	2 331.5
1995	33 278.7	33 298.6	33 321.9	3 124.9	3 125.2	3 129.9	2 482.9	2 483.9	2 488.8
1996	34 171.6	34 171.0	34 238.5	3 412.9	3 413.5	3 420.6	2 641.1	2 641.7	2 641.5
1997	36 182.8	36 165.4	36 058.3	3 727.8	3 729.7	3 717.8	2 876.0	2 877.4	2 873.3
1998	37 324.5	37 325.2	37 307.9	3 877.8	3 876.8	3 870.8	2 963.4	2 962.8	2 959.5
1999	39 822.3	39 841.2	39 906.7	4 139.7	4 142.8	4 151.3	3 120.6	3 123.4	3 127.7
1998									
Sep qtr	9 639.4	9 407.1	9 382.5	998.1	980.0	974.8	761.5	747.6	743.5
Dec qtr	9 904.4	9 601.1	9 546.3	1 043.2	1 000.1	990.7	792.7	760.1	754.0
1999									
Mar qtr	9 585.8	9 646.6	9 732.2	1 003.1	999.0	1 005.4	762.6	759.6	763.5
Jun qtr	9 427.3	9 925.8	9 913.0	946.4	1 014.3	1 023.5	716.8	768.2	774.1
Sep qtr	10 395.6	10 167.1	10 071.5	1 077.8	1 059.8	1 048.1	809.5	795.7	788.2
Dec qtr	10 413.6	10 101.8	10 190.1	1 112.4	1 069.8	1 074.3	831.7	799.8	801.9

(a) There is a break in series between December quarter 1996 and March quarter 1997 because of scope changes in the STA. Refer to Explanatory Notes, paragraphs 3 to 7.

(b) Australian quarterly seasonally adjusted and trend estimates are the sum of the relevant State and Territory estimates.

(c) The deflator used to revalue current price data in this table is the Consumer Price Index. See paragraphs 8 to 10 of the Explanatory Notes.

2

ACCOMMODATION ESTABLISHMENTS—AUST.

	Licensed hotels with facilities	Motels and guest houses	Serviced apartments	Star grading						Total
				1	2	3	4	5	Ungraded	
ESTABLISHMENTS AND CAPACITY										
	no.	no.	no.	no.	no.	no.	no.	no.	no.	no.
Dec qtr 1998										
Establishments	747	2 386	552	73	554	1 854	610	61	533	3 685
Guest rooms	70 802	84 701	26 558	2 215	16 363	70 171	53 384	15 281	24 647	182 061
Rooms per establishment	95	36	48	30	30	38	88	251	46	49
Dec qtr 1999										
Establishments	766	2 413	600	77	532	1 851	801	87	431	3 779
Guest rooms	73 416	86 019	30 644	2 316	15 269	72 247	62 191	21 968	16 088	190 079
Rooms per establishment	96	36	51	30	29	39	78	253	37	50
AVERAGE NIGHTLY ROOMS OCCUPIED PER ESTABLISHMENT										
	no.	no.	no.	no.	no.	no.	no.	no.	no.	no.
1998										
Dec qtr	61.1	19.4	29.2	10.3	13.7	21.5	59.4	187.0	22.9	29.3
1999										
Oct	66.6	21.9	33.7	12.1	14.5	24.7	56.5	190.5	17.8	32.8
Nov	67.2	20.3	31.8	11.4	13.3	23.1	55.2	195.3	17.7	31.7
Dec	53.4	16.4	27.7	9.4	11.5	18.8	44.4	153.7	15.1	25.7
Dec qtr	62.4	19.5	31.1	11.0	13.1	22.2	52.0	179.7	16.8	30.0
AVERAGE NIGHTLY GUESTS PER OCCUPIED ROOM										
	no.	no.	no.	no.	no.	no.	no.	no.	no.	no.
1998										
Dec qtr	1.6	1.8	2.2	1.7	1.8	1.8	1.7	1.6	1.7	1.8
1999										
Oct	1.6	1.8	2.2	1.6	1.8	1.8	1.8	1.6	1.7	1.8
Nov	1.6	1.7	2.0	1.6	1.7	1.7	1.7	1.6	1.6	1.7
Dec	1.7	1.8	2.3	1.7	1.8	1.9	1.9	1.8	1.8	1.9
Dec qtr	1.6	1.8	2.2	1.7	1.8	1.8	1.8	1.7	1.7	1.8
AVERAGE LENGTH OF STAY										
	days	days	days	days	days	days	days	days	days	days
1998										
Dec qtr	2.3	1.8	3.7	2.0	1.8	2.0	2.4	2.9	2.5	2.2
1999										
Oct	2.3	1.8	3.7	1.9	1.8	2.0	2.4	2.9	2.4	2.2
Nov	2.3	1.8	3.6	2.0	1.8	2.0	2.4	2.7	2.4	2.2
Dec	2.3	1.8	3.7	1.9	1.7	2.0	2.4	2.7	2.5	2.2
Dec qtr	2.3	1.8	3.7	2.0	1.7	2.0	2.4	2.8	2.4	2.2

3

TAKINGS, ACCOMMODATION ESTABLISHMENTS—AUST.

	Licensed hotels with facilities	Motels and guest houses	Serviced apart- ments	Star grading						Total
				1	2	3	4	5	Ungraded	
TAKINGS FROM ACCOMMODATION										
	\$'000	\$'000	\$'000	\$'000	\$'000	\$'000	\$'000	\$'000	\$'000	\$'000
1998										
Dec qtr	550 378	331 903	160 874	3 412	43 784	292 231	395 899	201 183	106 646	1 043 155
1999										
Oct	204 533	130 040	67 080	1 538	14 455	116 650	160 233	90 704	18 073	401 653
Nov	199 071	116 782	61 529	1 371	12 703	105 016	151 018	89 102	18 172	377 382
Dec	171 082	100 659	61 671	1 201	12 044	93 463	132 136	77 034	17 532	333 412
Dec qtr	574 687	347 480	190 280	4 111	39 202	315 129	443 388	256 840	53 777	1 112 447
AVERAGE TAKINGS PER ESTABLISHMENT										
	\$'000	\$'000	\$'000	\$'000	\$'000	\$'000	\$'000	\$'000	\$'000	\$'000
1998										
Dec qtr	736.8	139.1	291.4	46.7	79.0	157.6	649.0	3 298.1	200.1	283.1
1999										
Oct	267.0	53.9	111.8	20.0	27.2	63.0	200.0	1 042.6	41.9	106.3
Nov	259.9	48.4	102.5	17.8	23.9	56.7	188.5	1 024.2	42.2	99.9
Dec	223.3	41.7	102.8	15.6	22.6	50.5	165.0	885.5	40.7	88.2
Dec qtr	750.2	144.0	317.1	53.4	73.7	170.2	553.5	2 952.2	124.8	294.4
AVERAGE TAKINGS PER ROOM NIGHT OCCUPIED										
	\$	\$	\$	\$	\$	\$	\$	\$	\$	\$
1998										
Dec qtr	131	78	110	49	63	80	119	192	97	105
1999										
Oct	130	80	109	53	60	82	114	177	80	105
Nov	129	80	109	52	60	82	114	175	82	106
Dec	135	82	120	54	64	87	120	186	88	111
Dec qtr	131	80	112	53	61	83	116	179	83	107
AVERAGE TAKINGS PER ROOM NIGHT AVAILABLE										
	\$	\$	\$	\$	\$	\$	\$	\$	\$	\$
1998										
Dec qtr	85	43	67	17	29	45	81	143	48	63
1999										
Oct	90	49	72	21	31	52	83	133	38	69
Nov	90	45	68	20	28	49	81	135	39	66
Dec	75	38	65	17	26	42	69	113	36	57
Dec qtr	85	44	68	19	28	47	78	127	37	64
AVERAGE TAKINGS PER GUEST NIGHT										
	\$	\$	\$	\$	\$	\$	\$	\$	\$	\$
1998										
Dec qtr	80	44	50	29	34	43	68	118	56	59
1999										
Oct	79	45	51	33	34	45	65	107	47	59
Nov	81	48	53	32	35	47	68	109	50	62
Dec	78	45	52	32	35	45	64	103	50	59
Dec qtr	79	46	52	32	34	46	65	107	49	60

NEW SOUTH WALES

Capacity There were 1,306 accommodation establishments with 15 rooms or more in New South Wales at the end of December 1999, an increase of 24 since December 1998. The overall capacity of the 1,306 establishments rose by 2,800 guest rooms to 61,321, with licensed hotels (up 1,872 rooms) and motels and guest houses (up 613 rooms) accounting for 67% and 22% of the increase respectively. Accommodation establishments at the December quarter 1999 had an average of 47 guest rooms.

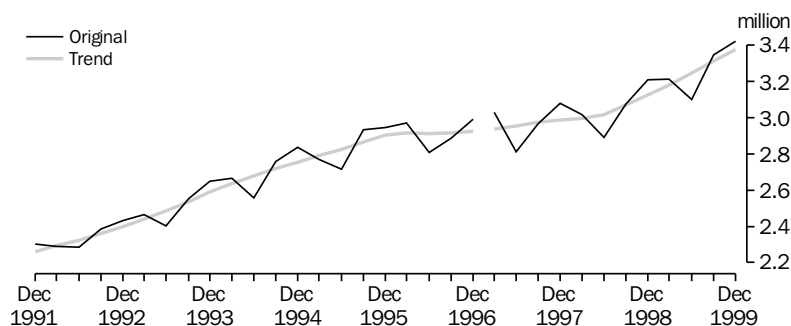
Accommodation establishments in New South Wales had on average 28.6 nightly rooms occupied in the December quarter 1999. Within the quarter, the highest level of nightly rooms occupied occurred in October with 30.6. Duration of stay varied according to the type of facility, guests in serviced apartments stayed an average of 3.2 days while those in licensed hotels stayed 2.3 days, guests in motels and guest houses stayed 1.7 days.

Takings from accommodation Total takings from accommodation establishments were \$395.2 million in the December quarter 1999, up 10% or \$36.0 million since the same period in 1998. Takings from licensed hotels increased 11%, from \$186.4 million in the December quarter 1998 to \$206.0 in the December quarter 1999 and accounted for 52% of the total takings in the most recent quarter. The month of December was the lowest in the quarter in terms of total takings for all accommodation types.

For the industry as a whole the average takings per establishment for New South Wales were \$302,600 for the December quarter 1999. Average takings rose for all forms of accommodation except for 2 star, 4 star and ungraded establishments which fell by 8%, 5% and 51% respectively. Average takings per room night occupied rose in the December quarter 1999 by \$3 compared to the same period in 1998. While licensed hotels remained unchanged, this was offset by increases in serviced apartments and motels and guest houses, with rises of \$10 and \$3 respectively with the previous year.

Room nights occupied The trend estimate of room nights occupied for the December quarter 1999 was 3.4 million, a slight increase on the previous quarter and an 8% increase since the December quarter 1998.

QUARTERLY ROOM NIGHTS OCCUPIED, NSW

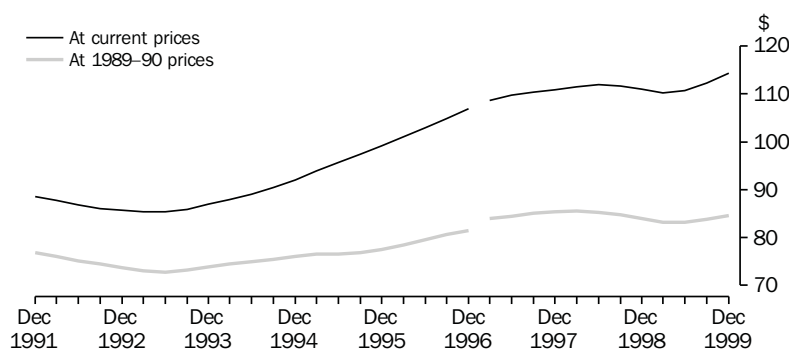


Notes: There is a break in series between December quarter 1996 and March quarter 1997 because of scope changes to STA. Refer to Explanatory Notes, paragraphs 3-7.

Average takings per room night occupied

The December quarter 1999 shows that average takings per room night occupied grew when compared with the same period last year. The trend estimate of average takings per room night occupied, at current prices, increased to over \$114, an increase of \$2 on the September quarter 1999 and \$3 on the December 1998 level. In 1989–90 prices, the estimate has increased to \$85, an increase of \$1 on the September quarter 1999 and equal to the December quarter 1998 level.

AVERAGE TAKINGS PER ROOM NIGHT OCCUPIED, NSW: Trend



Note: There is a break in series between December quarter 1996 and March quarter 1997 because of scope changes to the STA. Refer to Explanatory Notes, paragraphs 3–7.

4

HOTELS, MOTELS, GUEST HOUSES AND SERVICED APARTMENTS—NSW(a)

	Room nights occupied(b)			Takings at current prices(b)			Takings at average 1989–90 prices(c)		
	Original	Seasonally adjusted	Trend	Original	Seasonally adjusted	Trend	Original	Seasonally adjusted	Trend
	'000	'000	'000	\$m	\$m	\$m	\$m	\$m	\$m
1990	8 878.2	8 882.7	8 894.4	818.8	819.9	818.2	735.4	736.5	735.3
1991	8 928.1	8 920.0	8 905.2	798.6	798.3	796.6	696.5	696.3	694.7
1992	9 389.7	9 357.1	9 375.8	812.6	810.1	811.8	702.7	700.6	701.8
1993	10 065.0	10 061.9	10 051.5	863.7	863.4	863.4	736.1	735.9	736.2
1994	10 817.2	10 808.5	10 788.3	972.9	972.3	970.5	814.4	814.0	812.1
1995	11 363.4	11 359.3	11 385.3	1 097.1	1 097.1	1 099.3	873.1	873.2	875.2
1996	11 654.7	11 673.1	11 669.1	1 209.5	1 211.7	1 212.3	933.1	934.8	933.5
1997	11 887.0	11 870.3	11 852.4	1 303.6	1 305.1	1 302.5	1 003.5	1 004.7	1 004.1
1998	12 195.4	12 206.9	12 207.6	1 361.2	1 362.4	1 361.5	1 035.5	1 036.3	1 036.1
1999	13 081.1	13 100.0	13 117.5	1 463.7	1 466.2	1 468.4	1 095.0	1 097.0	1 097.6
1998									
Sep qtr	3 077.3	3 082.0	3 070.4	342.1	345.9	343.1	259.6	262.4	260.3
Dec qtr	3 210.5	3 141.9	3 124.5	359.2	348.7	346.9	271.5	263.6	262.4
1999									
Mar qtr	3 213.2	3 170.8	3 181.1	360.7	351.5	350.8	272.2	265.3	264.6
Jun qtr	3 099.8	3 215.2	3 244.8	332.8	350.5	359.2	250.2	263.6	269.7
Sep qtr	3 345.0	3 362.1	3 314.3	375.0	379.4	372.1	279.4	282.7	277.7
Dec qtr	3 423.1	3 351.9	3 377.3	395.2	384.7	386.2	293.1	285.4	285.6

(a) There is a break in series between December quarter 1996 and March quarter 1997 because of scope changes in the STA. Refer to Explanatory Notes, paragraphs 3 to 7.

(b) For presentation purposes the quarterly seasonally adjusted estimates for room nights occupied and takings at current prices are derived by summing the relevant monthly figures, while the quarterly trend estimates are derived from these quarterly seasonally adjusted figures.

(c) The deflator used to revalue current price data in this table is the Sydney All Groups Consumer Price Index. See paragraphs 8 to 10 of the Explanatory Notes.

5

ACCOMMODATION ESTABLISHMENTS—NSW

	Licensed hotels with facilities	Motels and guest houses	Serviced apartments	Star grading						Total
				1	2	3	4	5	Ungraded	
ESTABLISHMENTS AND CAPACITY										
	no.	no.	no.	no.	no.	no.	no.	no.	no.	no.
Dec qtr 1998										
Establishments	174	986	122	40	197	655	166	14	210	1 282
Guest rooms	19 881	33 026	5 614	1 378	5 920	21 982	16 167	3 513	9 561	58 521
Rooms per establishment	114	34	46	35	30	34	97	251	46	46
Dec qtr 1999										
Establishments	181	1 002	123	37	201	676	195	21	176	1 306
Guest rooms	21 753	33 639	5 929	1 280	5 670	24 680	17 446	5 768	6 477	61 321
Rooms per establishment	120	34	48	35	28	37	90	275	37	47
AVERAGE NIGHTLY ROOMS OCCUPIED PER ESTABLISHMENT										
	no.	no.	no.	no.	no.	no.	no.	no.	no.	no.
1998										
Dec qtr	77.5	18.2	29.2	11.1	15.3	19.2	69.2	189.3	22.8	27.3
1999										
Oct	84.4	20.7	31.9	12.8	15.5	23.9	67.3	198.8	16.0	30.6
Nov	90.0	19.2	31.5	13.4	14.5	22.5	67.9	221.8	16.7	30.2
Dec	71.8	16.2	28.2	11.1	12.9	18.7	55.6	173.5	14.5	25.0
Dec qtr	82.0	18.7	30.5	12.4	14.3	21.7	63.6	197.8	15.7	28.6
AVERAGE NIGHTLY GUESTS PER OCCUPIED ROOM										
	no.	no.	no.	no.	no.	no.	no.	no.	no.	no.
1998										
Dec qtr	1.6	1.8	2.0	1.8	1.9	1.8	1.7	1.6	1.6	1.7
1999										
Oct	1.6	1.8	2.0	1.7	1.9	1.8	1.7	1.5	1.7	1.7
Nov	1.5	1.7	1.9	1.7	1.8	1.7	1.6	1.5	1.6	1.6
Dec	1.7	1.8	2.2	1.8	1.9	1.9	1.8	1.6	1.7	1.8
Dec qtr	1.6	1.8	2.0	1.8	1.8	1.8	1.7	1.6	1.7	1.7
AVERAGE LENGTH OF STAY										
	days	days	days	days	days	days	days	days	days	days
1998										
Dec qtr	2.3	1.7	3.3	2.0	1.7	1.8	2.1	2.8	2.4	2.0
1999										
Oct	2.3	1.7	3.2	2.0	1.7	1.8	2.1	2.8	2.0	2.0
Nov	2.3	1.7	3.2	2.2	1.7	1.9	2.1	2.8	2.0	2.0
Dec	2.3	1.7	3.4	2.0	1.7	1.8	2.1	2.7	2.1	2.0
Dec qtr	2.3	1.7	3.2	2.0	1.7	1.9	2.1	2.8	2.1	2.0

6

TAKINGS(a), ACCOMMODATION ESTABLISHMENTS—NSW

	Licensed hotels with facilities	Motels and guest houses	Serviced apartments	Star grading						Total
				1	2	3	4	5	Ungraded	
TAKINGS FROM ACCOMMODATION										
	\$'000	\$'000	\$'000	\$'000	\$'000	\$'000	\$'000	\$'000	\$'000	\$'000
1998										
Dec qtr	186 403	130 748	42 021	2 276	17 804	96 473	137 382	56 899	48 339	359 172
1999										
Oct	69 515	52 236	15 818	885	5 981	42 792	53 344	28 149	6 419	137 569
Nov	72 376	47 205	15 152	859	5 413	39 085	51 992	30 469	6 916	134 734
Dec	64 126	42 797	15 940	767	5 340	35 373	47 515	27 183	6 685	122 862
Dec qtr	206 017	142 238	46 910	2 511	16 734	117 249	152 851	85 801	20 019	395 165
AVERAGE TAKINGS PER ESTABLISHMENT										
	\$'000	\$'000	\$'000	\$'000	\$'000	\$'000	\$'000	\$'000	\$'000	\$'000
1998										
Dec qtr	1 071.3	132.6	344.4	56.9	90.4	147.3	827.6	4 064.2	230.2	280.2
1999										
Oct	384.1	52.1	128.6	23.9	29.8	63.3	273.6	1 340.4	36.5	105.3
Nov	399.9	47.1	123.2	23.2	26.9	57.8	266.6	1 450.9	39.3	103.2
Dec	354.3	42.7	129.6	20.7	26.6	52.3	243.7	1 294.4	38.0	94.1
Dec qtr	1 138.2	142.0	381.4	67.9	83.3	173.4	783.9	4 085.8	113.7	302.6
AVERAGE TAKINGS PER ROOM NIGHT OCCUPIED										
	\$	\$	\$	\$	\$	\$	\$	\$	\$	\$
1998										
Dec qtr	151	80	128	56	64	83	130	233	112	112
1999										
Oct	148	81	133	60	62	85	131	218	78	112
Nov	148	82	132	58	63	86	131	218	80	114
Dec	159	85	150	60	67	91	141	241	85	122
Dec qtr	151	83	138	59	64	87	134	225	81	115
AVERAGE TAKINGS PER ROOM NIGHT AVAILABLE										
	\$	\$	\$	\$	\$	\$	\$	\$	\$	\$
1998										
Dec qtr	102	43	81	18	33	48	92	176	56	67
1999										
Oct	104	50	88	22	34	56	99	157	34	73
Nov	111	47	86	22	32	53	99	176	36	73
Dec	95	41	88	19	31	46	88	152	34	65
Dec qtr	103	46	87	21	32	52	95	162	35	70
AVERAGE TAKINGS PER GUEST NIGHT										
	\$	\$	\$	\$	\$	\$	\$	\$	\$	\$
1998										
Dec qtr	96	44	63	32	34	45	79	145	70	65
1999										
Oct	94	46	67	35	33	47	79	142	47	65
Nov	96	49	70	33	36	50	82	143	50	69
Dec	96	46	68	33	36	48	79	146	49	67
Dec qtr	95	47	68	34	35	49	80	143	49	67

(a) Including bed tax where applicable.

VICTORIA

Capacity At the end of the December quarter 1999, Victoria had 705 accommodation establishments with 15 rooms or more, 23 more than at the same time in 1998. These establishments provided 31,317 guest rooms, a 5% gain on 12 months ago. Most of the increase in capacity was due to a rise in the number of serviced apartments (up 29% or 919) to 4,132 guest rooms. Capacity in licensed hotels increased by 6% (573) to 10,903, motels and guest houses increased by 1% to 16,282 guest rooms.

The increase in supply was exceeded slightly by the demand for accommodation, with the average nightly rooms occupied per establishment rising to 25.8 in the December quarter 1999 from 25.6 a year ago. Licensed hotels had the highest average nightly number of rooms occupied in the December quarter 1999 (57.4), compared to 16.2 for motels and guest houses, and 37.7 for serviced apartments.

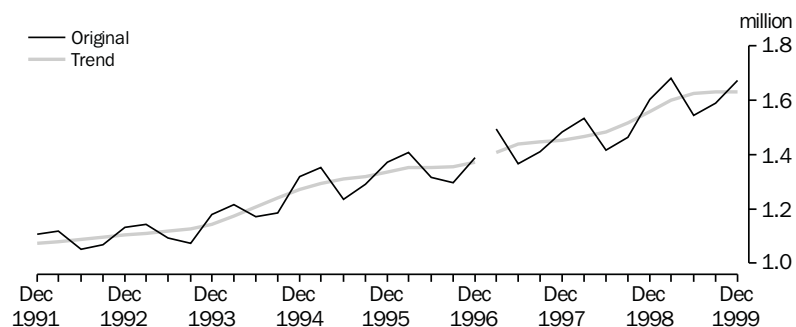
Average nightly guest per occupied room increased from 1.6 a year ago to 1.7 during the December quarter 1999.

Takings from accommodation Establishments in Victoria earned \$191.6 million from accommodation (up 5%) in the December quarter 1999, showing increases across all types of accommodation. Serviced apartments again increased their takings at the expense of the other sectors, rising from 14% a year ago to 18% in the December quarter 1999. Licensed hotels still account for nearly half (49%) of the takings in this quarter while motels and guest houses account for 33%.

Average takings per establishment rose 2% in the December quarter 1999 compared to the same period in 1998. However, average takings per guest night remained the same at \$69.

Room nights occupied The trend estimate of room nights occupied in Victoria has steadily increased during the quarterly periods December 1991 to June 1998. A period of particularly strong growth occurred between September 1998 to June 1999. However, in the December quarter 1999, the trend estimate has marginally decreased for the first time in 8 years.

QUARTERLY ROOM NIGHTS OCCUPIED, Vic

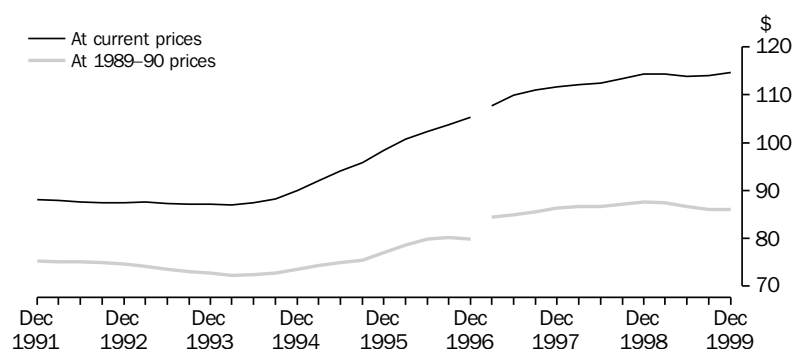


Notes: There is a break in series between December quarter 1996 and March quarter 1997 because of scope changes to STA. Refer to Explanatory Notes, paragraphs 3-7.

Average takings per room night occupied

In original terms, Victoria's average takings per room night occupied increased by 1% to \$115 during the December quarter 1999 compared to a year ago. The graph below shows that the trend estimate of average takings per room night occupied, at current prices, also increased to reach \$115 in the December quarter 1999, a gain of \$1 on the September quarter 1999 level but \$1 less than the previous December quarter. The estimate in 1989–90 prices of \$86 for the December quarter 1999 is at its lowest level since the September quarter 1997.

AVERAGE TAKINGS PER ROOM NIGHT OCCUPIED, Vic: Trend



Note: There is a break in series between December quarter 1996 and March quarter 1997 because of scope changes to STA. Refer to Explanatory Notes, paragraphs 3–7.

7

HOTELS, MOTELS, GUEST HOUSES AND SERVICED APARTMENTS—VIC.(a)

	Room nights occupied(b)			Takings at current prices(b)			Takings at average 1989–90 prices(c)		
	Original	Seasonally adjusted	Trend	Original	Seasonally adjusted	Trend	Original	Seasonally adjusted	Trend
	'000	'000	'000	\$m	\$m	\$m	\$m	\$m	\$m
1990	4 161.6	4 165.8	4 156.2	361.5	361.9	360.2	323.6	324.0	322.7
1991	4 209.1	4 212.4	4 209.8	369.1	369.4	370.2	318.4	318.8	319.2
1992	4 367.6	4 359.0	4 366.1	382.5	382.0	382.5	327.3	326.9	327.1
1993	4 490.5	4 497.1	4 497.9	391.6	392.7	392.7	328.8	329.8	329.9
1994	4 890.8	4 894.5	4 894.5	432.5	432.6	431.8	356.8	356.9	356.1
1995	5 248.4	5 258.4	5 255.0	497.7	499.2	500.1	394.0	395.2	396.3
1996	5 411.1	5 408.4	5 430.0	555.7	556.2	559.6	431.2	431.6	432.3
1997	5 754.2	5 759.9	5 746.0	634.9	635.5	632.7	490.3	490.7	490.2
1998	6 016.7	6 025.2	6 026.5	681.0	681.9	681.7	523.9	524.6	524.4
1999	6 488.5	6 499.2	6 488.7	741.5	743.0	741.3	561.5	562.6	561.4
1998									
Sep qtr	1 464.3	1 507.8	1 517.1	170.0	170.9	172.1	130.6	131.4	132.2
Dec qtr	1 602.6	1 555.2	1 558.5	182.2	178.6	178.2	139.6	136.9	136.6
1999									
Mar qtr	1 680.8	1 616.1	1 601.4	195.6	185.6	183.1	149.5	141.9	140.0
Jun qtr	1 545.6	1 620.0	1 624.3	170.1	183.7	184.9	129.6	139.9	140.6
Sep qtr	1 589.5	1 637.8	1 631.7	184.1	185.2	186.0	138.8	139.7	140.4
Dec qtr	1 672.7	1 625.3	1 631.3	191.6	188.4	187.2	143.6	141.2	140.3

(a) There is a break in series between December quarter 1996 and March quarter 1997 because of scope changes in the STA. Refer to Explanatory Notes, paragraphs 3 to 7.

(b) For presentation purposes the quarterly seasonally adjusted estimates for room nights occupied and takings at current prices are derived by summing the relevant monthly figures, while the quarterly trend estimates are derived from these quarterly seasonally adjusted figures.

(c) The deflator used to revalue current price data in this table is the Melbourne All Groups Consumer Price Index. See paragraphs 8 to 10 of the Explanatory Notes.

	Licensed hotels with facilities	Motels and guest houses	Serviced apart- ments	Star grading						Total
				1	2	3	4	5	Ungraded	
ESTABLISHMENTS AND CAPACITY										
	no.	no.	no.	no.	no.	no.	no.	no.	no.	no.
Dec qtr 1998										
Establishments	118	503	61	4	92	382	126	11	67	682
Guest rooms	10 330	16 174	3 213	93	2 422	11 972	9 857	2 974	2 399	29 717
Rooms per establishment	88	32	53	23	26	31	78	270	36	44
Dec qtr 1999										
Establishments	126	505	74	10	84	380	171	14	46	705
Guest rooms	10 903	16 282	4 132	220	2 268	12 229	11 431	3 396	1 773	31 317
Rooms per establishment	87	32	56	22	27	32	67	243	39	44
AVERAGE NIGHTLY ROOMS OCCUPIED PER ESTABLISHMENT										
	no.	no.	no.	no.	no.	no.	no.	no.	no.	no.
1998										
Dec qtr	59.7	16.4	35.4	5.5	10.5	16.5	53.8	211.4	15.8	25.6
1999										
Oct	59.9	17.9	40.0	8.9	11.0	18.4	47.9	173.8	19.3	27.7
Nov	63.6	17.2	40.5	7.2	10.5	17.7	49.0	195.9	19.9	27.9
Dec	48.9	13.6	32.8	5.6	8.9	14.1	37.6	147.4	17.1	21.9
Dec qtr	57.4	16.2	37.7	7.2	10.1	16.7	44.8	172.1	18.8	25.8
AVERAGE NIGHTLY GUESTS PER OCCUPIED ROOM										
	no.	no.	no.	no.	no.	no.	no.	no.	no.	no.
1998										
Dec qtr	1.5	1.7	1.8	1.4	1.9	1.8	1.6	1.4	1.7	1.6
1999										
Oct	1.5	1.7	1.8	1.7	1.9	1.8	1.6	1.4	1.6	1.6
Nov	1.5	1.7	1.7	1.8	1.9	1.7	1.6	1.4	1.6	1.6
Dec	1.6	1.8	1.9	1.7	1.9	1.8	1.7	1.5	1.6	1.7
Dec qtr	1.5	1.7	1.8	1.7	1.9	1.8	1.6	1.4	1.6	1.7
AVERAGE LENGTH OF STAY										
	days	days	days	days	days	days	days	days	days	days
1998										
Dec qtr	2.2	1.7	3.4	1.6	1.8	1.9	2.2	2.5	2.1	2.0
1999										
Oct	2.2	1.7	3.2	1.7	1.6	1.9	2.1	2.5	3.2	2.0
Nov	2.2	1.8	3.2	1.7	1.6	1.9	2.1	2.3	3.1	2.1
Dec	2.0	1.7	3.0	1.5	1.6	1.9	2.0	2.1	3.2	2.0
Dec qtr	2.1	1.7	3.1	1.7	1.6	1.9	2.1	2.3	3.2	2.0

9

TAKINGS, ACCOMMODATION ESTABLISHMENTS—VIC.

	Licensed hotels with facilities	Motels and guest houses	Serviced apart- ments	Star grading						Ungraded	Total
				1	2	3	4	5			
TAKINGS FROM ACCOMMODATION											
	\$'000	\$'000	\$'000	\$'000	\$'000	\$'000	\$'000	\$'000	\$'000	\$'000	
1998											
Dec qtr	93 250	62 674	26 283	67	4 971	45 683	77 204	44 513	9 769	182 207	
1999											
Oct	33 297	23 174	11 862	149	1 634	17 196	30 827	15 503	3 023	68 333	
Nov	34 577	21 829	12 028	109	1 493	16 020	30 736	16 757	3 319	68 434	
Dec	26 837	18 115	9 927	88	1 388	13 273	24 381	12 866	2 881	54 878	
Dec qtr	94 711	63 117	33 817	346	4 515	46 490	85 945	45 126	9 223	191 644	
AVERAGE TAKINGS PER ESTABLISHMENT											
	\$'000	\$'000	\$'000	\$'000	\$'000	\$'000	\$'000	\$'000	\$'000	\$'000	
1998											
Dec qtr	790.3	124.6	430.9	16.9	54.0	119.6	612.7	4 046.6	145.8	267.2	
1999											
Oct	264.3	45.9	160.3	14.9	19.5	45.3	180.3	1 107.4	65.7	96.9	
Nov	274.4	43.2	162.5	10.9	17.8	42.2	179.7	1 196.9	72.1	97.1	
Dec	213.0	35.9	134.1	8.8	16.5	34.9	142.6	919.0	62.6	77.8	
Dec qtr	751.7	125.0	457.0	34.6	53.8	122.3	502.6	3 223.3	200.5	271.8	
AVERAGE TAKINGS PER ROOM NIGHT OCCUPIED											
	\$	\$	\$	\$	\$	\$	\$	\$	\$	\$	
1998											
Dec qtr	144	83	132	33	56	79	124	208	100	114	
1999											
Oct	142	83	132	54	57	80	121	206	116	113	
Nov	144	84	134	51	57	80	123	204	121	116	
Dec	141	85	132	50	60	80	122	201	119	115	
Dec qtr	142	84	133	52	58	80	122	204	118	115	
AVERAGE TAKINGS PER ROOM NIGHT AVAILABLE											
	\$	\$	\$	\$	\$	\$	\$	\$	\$	\$	
1998											
Dec qtr	98	42	89	8	22	42	85	163	44	67	
1999											
Oct	99	46	95	22	23	45	87	147	58	71	
Nov	106	45	97	17	22	44	90	165	62	73	
Dec	79	36	78	13	20	35	69	122	53	57	
Dec qtr	94	42	90	17	22	41	82	144	58	67	
AVERAGE TAKINGS PER GUEST NIGHT											
	\$	\$	\$	\$	\$	\$	\$	\$	\$	\$	
1998											
Dec qtr	96	48	73	24	30	45	80	144	60	69	
1999											
Oct	95	48	75	32	31	45	77	146	71	69	
Nov	97	50	77	28	31	46	79	142	76	72	
Dec	88	48	69	30	32	44	72	134	73	67	
Dec qtr	94	49	74	30	31	45	76	141	74	69	

QUEENSLAND

Capacity In Queensland at the end of the December quarter 1999, there were 940 accommodation establishments with 15 rooms or more, providing 51,895 guest rooms. The number of guest rooms offered by licensed hotels fell slightly in comparison with the December quarter 1998 (by 53), while those in motels and guest houses increased slightly (by 137) and guest rooms in serviced apartments rose by 1,462. Serviced apartments provided 24% of all guest rooms at the end of December 1999, a 2% gain on the same period 12 months ago.

The average number of rooms per establishment varied widely across accommodation types. In the December quarter 1999, the average number of rooms in licensed hotels was 120, motels and guest houses, and serviced apartments tended to be much smaller with average sizes of 36 and 50 rooms respectively.

Average nightly rooms occupied per establishment in the December quarter 1999 of 33.5 rose slightly when compared with the preceding December quarter (33.1). All accommodation types (excluding motels and guest houses) showed increases in average nightly rooms occupied in the December quarter 1999 compared to the corresponding period in 1998.

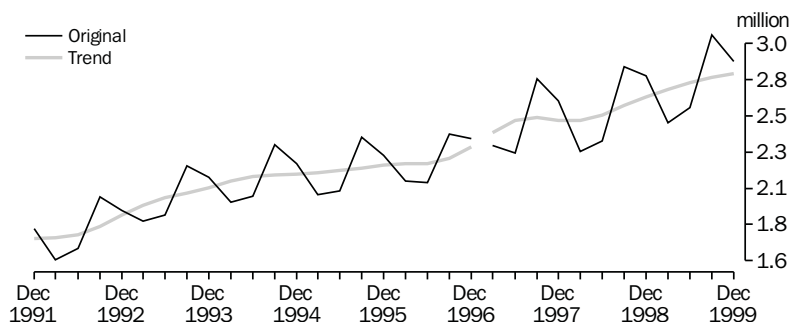
The average duration of stay was 2.8 days with those in serviced apartments choosing to stay the longest (4.4 days).

Takings from accommodation In the December quarter 1999, takings from accommodation totalled \$293.6 million, a gain of 3% (\$9.1 million) on the December quarter 1998. Serviced apartments recorded the strongest growth in takings, recording a 13% increase to \$64.2 million. However, 53% (\$156.9 million) of all takings in the period were earned by licensed hotels.

Average takings per establishment increased by 1% (\$3,700) to \$312,300 in the December quarter 1999 compared to the same period in 1998.

Room nights occupied For the December quarter 1999, the trend estimate of quarterly room nights occupied was 2.8 million, up 6% on the December quarter 1998 level. This was the seventh consecutive quarterly increase.

QUARTERLY ROOM NIGHTS OCCUPIED, Qld

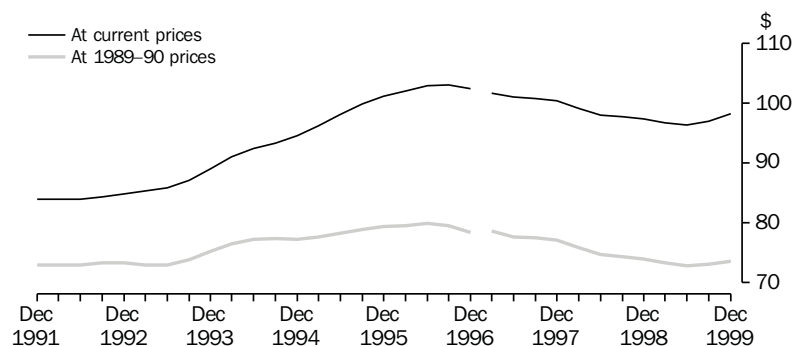


Notes: There is a break in series between December quarter 1996 and March quarter 1997 because of scope changes to STA. Refer to Explanatory Notes, paragraphs 3-7.

Average takings per room night occupied

Average takings per room night occupied, in both current and 1989–90 prices, had been on an upward trend since the June quarter 1999. In current prices the trend estimate for the December quarter 1999 of \$98, rose \$1 from the December quarter 1998 level. The estimate in 1989–90 prices remained at \$74, during the December quarters 1999 and 1998.

AVERAGE TAKINGS PER ROOM NIGHT OCCUPIED, Qld: Trend



Note: There is a break in series between December quarter 1996 and March quarter 1997 because of scope changes to STA. Refer to Explanatory Notes, paragraphs 3–7.

10

HOTELS, MOTELS, GUEST HOUSES AND SERVICED APARTMENTS—QLD(a)

	Room nights occupied(b)			Takings at current prices(b)			Takings at average 1989–90 prices(c)		
	Original	Seasonally adjusted	Trend	Original	Seasonally adjusted	Trend	Original	Seasonally adjusted	Trend
	'000	'000	'000	\$m	\$m	\$m	\$m	\$m	\$m
1990	6 230.9	6 233.5	6 179.6	493.2	492.9	486.6	446.8	446.8	441.1
1991	6 761.7	6 744.1	6 737.0	559.8	557.4	556.5	490.7	488.7	487.8
1992	7 224.9	7 192.2	7 236.8	609.4	605.8	610.0	528.8	525.7	529.2
1993	8 089.6	8 088.6	8 075.1	702.5	701.5	701.4	596.3	595.6	595.6
1994	8 566.7	8 564.9	8 562.2	797.1	796.4	795.4	661.9	661.7	660.4
1995	8 753.9	8 759.0	8 762.1	866.1	865.5	866.6	687.5	687.3	688.4
1996	9 023.1	9 008.0	9 040.4	928.2	926.6	928.2	718.5	717.3	717.4
1997	10 034.9	10 021.6	9 957.1	1 012.1	1 010.6	1 005.3	778.2	776.9	774.0
1998	10 317.9	10 296.4	10 299.7	1 015.0	1 011.6	1 010.1	772.3	769.8	769.0
1999	11 014.0	11 004.0	11 039.1	1 068.9	1 067.1	1 072.1	806.1	805.0	808.1
1998									
Sep qtr	2 850.5	2 616.2	2 602.3	273.7	256.3	254.4	208.1	194.9	193.3
Dec qtr	2 793.0	2 680.1	2 656.4	284.5	264.0	258.8	215.5	200.0	196.4
1999									
Mar qtr	2 489.4	2 656.2	2 703.2	244.4	256.7	261.5	185.4	194.7	198.2
Jun qtr	2 586.2	2 768.4	2 747.5	239.0	263.3	264.7	180.9	199.3	200.1
Sep qtr	3 055.9	2 810.9	2 782.7	292.0	274.0	270.0	219.4	205.9	203.3
Dec qtr	2 882.5	2 768.5	2 805.7	293.6	273.1	275.9	220.4	205.0	206.5

(a) There is a break in series between December quarter 1996 and March quarter 1997 because of scope changes in the STA. Refer to Explanatory Notes, paragraphs 3 to 7.

(b) For presentation purposes the quarterly seasonally adjusted estimates for room nights occupied and takings at current prices are derived by summing the relevant monthly figures, while the quarterly trend estimates are derived from these quarterly seasonally adjusted figures.

(c) The deflator used to revalue current price data in this table is the Brisbane All Groups Consumer Price Index. See paragraphs 8 to 10 of the Explanatory Notes.

	Licensed hotels with facilities	Motels and guest houses	Serviced apart- ments	Star grading						Total
				1	2	3	4	5	Ungraded	
ESTABLISHMENTS AND CAPACITY										
	no.	no.	no.	no.	no.	no.	no.	no.	no.	no.
Dec qtr 1998										
Establishments	171	516	235	20	120	451	194	22	115	922
Guest rooms	20 735	18 436	11 178	505	3 215	17 790	16 906	5 003	6 930	50 349
Rooms per establishment	121	36	48	25	27	39	87	227	60	55
Dec qtr 1999										
Establishments	173	515	252	14	119	422	267	31	87	940
Guest rooms	20 682	18 573	12 640	362	3 005	16 489	19 797	8 374	3 868	51 895
Rooms per establishment	120	36	50	26	25	39	74	270	45	55
AVERAGE NIGHTLY ROOMS OCCUPIED PER ESTABLISHMENT										
	no.	no.	no.	no.	no.	no.	no.	no.	no.	no.
1998										
Dec qtr	77.9	20.9	27.3	11.6	13.6	23.3	56.2	163.0	31.8	33.1
1999										
Oct	85.5	23.1	31.2	11.7	12.5	25.5	51.8	202.9	23.0	36.8
Nov	82.0	21.9	28.3	10.5	11.7	24.0	48.3	195.8	22.2	34.7
Dec	68.3	17.6	25.8	8.7	10.4	20.3	40.2	162.6	18.9	29.1
Dec qtr	78.5	20.8	28.4	10.3	11.5	23.3	46.7	187.0	21.3	33.5
AVERAGE NIGHTLY GUESTS PER OCCUPIED ROOM										
	no.	no.	no.	no.	no.	no.	no.	no.	no.	no.
1998										
Dec qtr	1.9	1.8	2.4	1.7	1.8	2.0	2.0	1.8	2.1	2.0
1999										
Oct	1.9	1.8	2.5	1.6	1.8	1.9	2.0	1.9	1.9	2.0
Nov	1.8	1.7	2.3	1.5	1.7	1.9	1.9	1.8	1.8	1.9
Dec	2.0	1.9	2.6	1.6	1.9	2.1	2.2	2.1	2.0	2.1
Dec qtr	1.9	1.8	2.5	1.6	1.8	2.0	2.0	1.9	1.9	2.0
AVERAGE LENGTH OF STAY										
	days	days	days	days	days	days	days	days	days	days
1998										
Dec qtr	2.7	2.1	4.3	2.2	1.8	2.5	2.8	3.4	3.2	2.7
1999										
Oct	2.8	2.1	4.5	2.3	1.8	2.5	3.1	3.3	3.3	2.8
Nov	2.7	2.2	4.3	2.0	1.8	2.5	3.0	2.9	3.2	2.7
Dec	2.7	2.1	4.5	2.2	1.7	2.5	3.0	3.2	3.2	2.8
Dec qtr	2.7	2.1	4.4	2.2	1.8	2.5	3.0	3.1	3.2	2.8

	Licensed hotels with facilities	Motels and guest houses	Serviced apart- ments	Star grading						Total
				1	2	3	4	5	Ungraded	
TAKINGS FROM ACCOMMODATION										
	\$'000	\$'000	\$'000	\$'000	\$'000	\$'000	\$'000	\$'000	\$'000	\$'000
1998										
Dec qtr	155 989	71 431	57 088	825	9 958	74 214	106 548	63 473	29 490	284 508
1999										
Oct	58 218	26 998	22 655	195	2 635	27 339	41 650	31 270	4 782	107 871
Nov	50 996	24 473	19 471	170	2 434	24 336	36 167	27 256	4 576	94 940
Dec	47 695	20 942	22 116	149	2 376	23 610	33 850	25 775	4 993	90 753
Dec qtr	156 910	72 413	64 241	514	7 445	75 285	111 667	84 301	14 351	293 563
AVERAGE TAKINGS PER ESTABLISHMENT										
	\$'000	\$'000	\$'000	\$'000	\$'000	\$'000	\$'000	\$'000	\$'000	\$'000
1998										
Dec qtr	912.2	138.4	242.9	41.2	83.0	164.6	549.2	2 885.1	256.4	308.6
1999										
Oct	336.5	52.4	89.9	13.9	22.1	64.8	156.0	1 008.7	55.0	114.8
Nov	294.8	47.5	77.3	12.2	20.5	57.7	135.5	879.2	52.6	101.0
Dec	275.7	40.7	87.8	10.6	20.0	55.9	126.8	831.4	57.4	96.5
Dec qtr	907.0	140.6	254.9	36.7	62.6	178.4	418.2	2 719.4	165.0	312.3
AVERAGE TAKINGS PER ROOM NIGHT OCCUPIED										
	\$	\$	\$	\$	\$	\$	\$	\$	\$	\$
1998										
Dec qtr	127	72	99	39	67	77	106	192	90	102
1999										
Oct	127	74	95	38	57	82	98	160	83	101
Nov	120	73	93	39	59	80	94	150	85	98
Dec	130	75	110	40	62	89	102	165	98	107
Dec qtr	126	74	99	39	59	83	98	158	89	102
AVERAGE TAKINGS PER ROOM NIGHT AVAILABLE										
	\$	\$	\$	\$	\$	\$	\$	\$	\$	\$
1998										
Dec qtr	82	42	57	18	34	45	69	138	48	62
1999										
Oct	91	47	59	17	28	54	68	121	43	68
Nov	82	44	53	16	27	49	61	109	42	61
Dec	74	36	57	13	26	46	55	99	42	57
Dec qtr	83	43	56	15	27	50	62	109	43	62
AVERAGE TAKINGS PER GUEST NIGHT										
	\$	\$	\$	\$	\$	\$	\$	\$	\$	\$
1998										
Dec qtr	68	41	41	23	38	39	54	105	44	52
1999										
Oct	68	42	39	24	32	42	48	85	44	52
Nov	66	43	40	26	34	42	48	82	46	52
Dec	64	40	42	24	33	42	47	78	50	51
Dec qtr	66	42	40	25	33	42	48	82	47	52

SOUTH AUSTRALIA

Capacity There were 10,463 guest rooms available in South Australia at the end of December 1999 spread across 234 accommodation establishments with 15 rooms or more. The number of guest rooms rose from 10,076 in the corresponding 1998 period (an increase of 4%) while 5 new establishments were added. The bulk of the increase in capacity occurred in serviced apartments which grew by 36% to 1,207 guest rooms. The average size of accommodation establishments of all types rose to 45 guest rooms from an average of 44 rooms a year ago.

Between the December quarters of 1998 and 1999 the average nightly number of rooms occupied decreased from 26.7 to 26.1. Both licensed hotels and motels and guest houses showed falls in demand in terms of nightly rooms occupied (down 3-4%) while serviced apartments showed an increase of 7% (up 1.9 nightly rooms to 28.5).

For the December quarter 1999, there were on average 1.7 nightly guests per occupied room, whose average duration of stay was 2.0 days. Serviced apartments had both the highest number of nightly guests per occupied room (2.0) and duration of stay (3.1).

Takings from accommodation

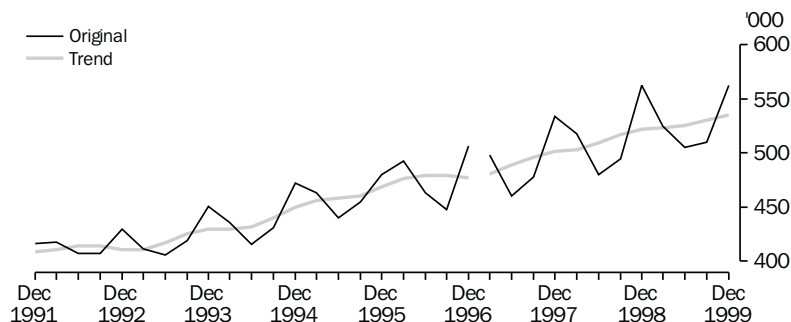
Takings from accommodation establishments in the December quarter 1999 were \$51.0 million, slightly more than the \$49.8 million recorded for the same period in 1998. This equated to \$218,000 in average takings per establishment, up slightly on the December quarter 1998 (\$217,600). Average takings for serviced apartments showed the greatest improvement over the two periods, rising 12% to \$248,500 in the December quarter 1999. Licensed hotels fell by 3% to \$397,100 for the same period.

In the December quarter 1999, average takings per room night occupied were \$91, an increase of \$2 on the December quarter 1998. Serviced apartments increased by \$4 to \$95, motels and guest houses were up by \$3 to \$76, and licensed hotels remained unchanged at \$106.

Room nights occupied

In the December quarter 1999, the trend estimate of room nights occupied was 535,400, a 3% increase compared with the December quarter 1998 estimate of 521,700.

QUARTERLY ROOM NIGHTS OCCUPIED, SA

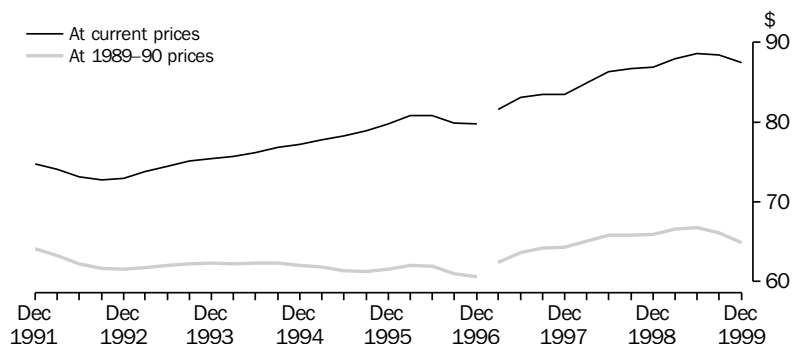


Notes: There is a break in series between December quarter 1996 and March quarter 1997 because of scope changes to STA. Refer to Explanatory Notes, paragraphs 3-7.

Average takings per room night occupied

The trend estimate of average takings per room night occupied during the two most recent quarters have decreased after a period of steady growth that started in the March quarter 1997. In the December quarter 1999, the current price estimate of \$87, is \$1 less than the previous quarter. The trend estimate in constant price terms has also fallen by \$1, to \$65.

AVERAGE TAKINGS PER ROOM NIGHT OCCUPIED, SA: Trend



Note: There is a series break between December quarter 1996 and March quarter 1997 because of scope changes to STA. Refer to Explanatory Notes, paragraphs 3-7.

13

HOTELS, MOTELS, GUEST HOUSES AND SERVICED APARTMENTS—SA(a)

	Room nights occupied(b)			Takings at current prices(b)			Takings at average 1989-90 prices(c)		
	Original	Seasonally adjusted	Trend	Original	Seasonally adjusted	Trend	Original	Seasonally adjusted	Trend
	'000	'000	'000	\$m	\$m	\$m	\$m	\$m	\$m
1990	1 680.5	1 676.6	1 670.3	119.9	118.6	117.8	108.2	107.0	106.4
1991	1 620.5	1 615.5	1 620.7	121.1	119.8	120.1	104.9	103.8	104.0
1992	1 661.7	1 652.8	1 649.7	122.2	120.9	120.7	103.7	102.7	102.5
1993	1 687.0	1 682.2	1 682.9	126.6	125.4	125.7	105.2	104.2	104.5
1994	1 754.5	1 750.3	1 751.3	135.3	134.1	134.0	110.1	109.1	109.0
1995	1 838.0	1 838.7	1 843.1	145.1	144.5	145.1	113.4	112.9	113.4
1996	1 910.2	1 916.8	1 912.3	152.6	153.5	153.6	116.7	117.4	117.3
1997	1 970.3	1 969.9	1 967.4	163.1	163.4	163.1	125.1	125.4	125.2
1998	2 054.3	2 058.1	2 050.8	176.8	177.8	176.8	134.5	135.3	134.7
1999	2 102.6	2 102.4	2 114.7	185.0	185.3	186.3	138.9	139.2	139.8
1998									
Sep qtr	494.6	515.8	517.1	42.5	45.1	44.8	32.3	34.3	34.0
Dec qtr	562.6	535.9	521.7	49.8	46.0	45.3	37.6	34.7	34.4
1999									
Mar qtr	524.8	507.7	523.4	45.5	44.5	46.0	34.6	33.9	34.9
Jun qtr	505.3	530.1	525.7	44.4	47.7	46.6	33.6	36.0	35.1
Sep qtr	510.4	534.3	530.2	44.0	47.1	46.9	32.9	35.2	35.1
Dec qtr	562.2	530.4	535.4	51.0	46.0	46.8	37.9	34.1	34.7

(a) There is a break in series between December quarter 1996 and March quarter 1997 because of scope changes in the STA. Refer to Explanatory Notes, paragraphs 3 to 7.

(b) For presentation purposes the quarterly seasonally adjusted estimates for room nights occupied and takings at current prices are derived by summing the relevant monthly figures, while the quarterly trend estimates are derived from these quarterly seasonally adjusted figures.

(c) The deflator used to revalue current price data in this table is the Adelaide All Groups Consumer Price Index. See paragraphs 8 to 10 of the Explanatory Notes.

	Licensed hotels with facilities	Motels and guest houses	Serviced apartments	Star grading						Ungraded	Total
				1	2	3	4	5			
ESTABLISHMENTS AND CAPACITY											
	no.	no.	no.	no.	no.	no.	no.	no.	no.	no.	
Dec qtr 1998											
Establishments	61	146	22	3	57	124	35	3	7	229	
Guest rooms	4 053	5 135	888	91	1 627	4 720	2 391	1 081	166	10 076	
Rooms per establishment	66	35	40	30	29	38	68	360	24	44	
Dec qtr 1999											
Establishments	62	146	26	7	55	118	41	4	9	234	
Guest rooms	4 090	5 166	1 207	204	1 532	4 575	2 645	1 263	244	10 463	
Rooms per establishment	66	35	46	29	28	39	65	316	27	45	
AVERAGE NIGHTLY ROOMS OCCUPIED PER ESTABLISHMENT											
	no.	no.	no.	no.	no.	no.	no.	no.	no.	no.	
1998											
Dec qtr	41.9	20.4	26.6	8.1	11.7	22.3	48.6	299.0	10.4	26.7	
1999											
Oct	47.2	23.2	32.1	12.2	13.7	25.7	48.7	287.9	14.6	30.5	
Nov	42.6	19.7	29.8	9.8	11.4	22.3	44.2	267.0	10.2	26.9	
Dec	32.2	15.6	23.8	7.2	10.0	17.5	34.1	184.3	10.4	20.9	
Dec qtr	40.6	19.5	28.5	9.7	11.7	21.8	42.3	246.2	11.8	26.1	
AVERAGE NIGHTLY GUESTS PER OCCUPIED ROOM											
	no.	no.	no.	no.	no.	no.	no.	no.	no.	no.	
1998											
Dec qtr	1.5	1.7	2.0	1.7	1.7	1.7	1.6	1.4	1.5	1.6	
1999											
Oct	1.5	1.7	2.0	1.5	1.7	1.8	1.7	1.4	2.0	1.7	
Nov	1.4	1.6	1.9	1.5	1.6	1.7	1.6	1.3	1.7	1.6	
Dec	1.6	1.8	2.2	1.7	1.7	1.8	1.8	1.4	2.0	1.7	
Dec qtr	1.5	1.7	2.0	1.6	1.7	1.7	1.7	1.4	1.9	1.7	
AVERAGE LENGTH OF STAY											
	days	days	days	days	days	days	days	days	days	days	
1998											
Dec qtr	2.1	1.7	3.1	1.4	1.6	1.8	2.2	2.7	2.1	2.0	
1999											
Oct	2.1	1.9	3.2	1.4	1.8	1.9	2.3	2.9	2.3	2.1	
Nov	2.0	1.8	3.1	1.7	1.8	1.8	2.2	2.4	2.4	2.0	
Dec	1.9	1.7	3.1	1.4	1.7	1.8	2.1	2.1	2.4	1.9	
Dec qtr	2.0	1.8	3.1	1.5	1.8	1.8	2.2	2.5	2.3	2.0	

	Licensed hotels with facilities	Motels and guest houses	Serviced apart- ments	Star grading						Ungraded	Total
				1	2	3	4	5			
TAKINGS FROM ACCOMMODATION											
	\$'000	\$'000	\$'000	\$'000	\$'000	\$'000	\$'000	\$'000	\$'000	\$'000	
1998											
Dec qtr	24 954	19 990	4 884	83	3 182	17 889	17 105	11 263	307	49 829	
1999											
Oct	9 752	8 010	2 532	125	1 206	6 829	6 834	5 013	286	20 293	
Nov	8 475	6 483	2 124	98	949	5 577	5 859	4 426	172	17 082	
Dec	6 392	5 436	1 806	79	904	4 730	4 675	3 054	194	13 634	
Dec qtr	24 619	19 928	6 462	302	3 059	17 136	17 368	12 493	652	51 010	
AVERAGE TAKINGS PER ESTABLISHMENT											
	\$'000	\$'000	\$'000	\$'000	\$'000	\$'000	\$'000	\$'000	\$'000	\$'000	
1998											
Dec qtr	409.1	136.9	222.0	27.6	55.8	144.3	488.7	3 754.2	43.9	217.6	
1999											
Oct	157.3	54.9	97.4	17.9	21.9	57.9	166.7	1 253.2	31.8	86.7	
Nov	136.7	44.4	81.7	14.0	17.3	47.3	142.9	1 106.5	19.1	73.0	
Dec	103.1	37.2	69.5	11.3	16.4	40.1	114.0	763.4	21.5	58.3	
Dec qtr	397.1	136.5	248.5	43.1	55.6	145.2	423.6	3 123.2	72.4	218.0	
AVERAGE TAKINGS PER ROOM NIGHT OCCUPIED											
	\$	\$	\$	\$	\$	\$	\$	\$	\$	\$	
1998											
Dec qtr	106	73	91	37	52	71	109	137	46	89	
1999											
Oct	108	76	98	47	52	73	110	140	70	92	
Nov	107	75	92	48	51	71	108	138	62	90	
Dec	103	77	94	50	53	74	108	134	67	90	
Dec qtr	106	76	95	48	52	72	109	138	67	91	
AVERAGE TAKINGS PER ROOM NIGHT AVAILABLE											
	\$	\$	\$	\$	\$	\$	\$	\$	\$	\$	
1998											
Dec qtr	67	42	60	10	21	41	78	113	20	54	
1999											
Oct	77	50	68	20	25	48	83	128	38	63	
Nov	69	42	59	16	21	41	74	117	24	54	
Dec	50	34	48	13	19	33	57	78	26	42	
Dec qtr	65	42	58	16	22	41	71	108	29	53	
AVERAGE TAKINGS PER GUEST NIGHT											
	\$	\$	\$	\$	\$	\$	\$	\$	\$	\$	
1998											
Dec qtr	70	43	45	22	31	41	67	97	30	54	
1999											
Oct	71	44	49	31	30	42	65	100	36	55	
Nov	74	46	49	32	31	42	69	103	36	57	
Dec	66	43	43	30	31	40	60	95	33	52	
Dec qtr	71	44	47	31	30	41	65	100	35	55	

WESTERN AUSTRALIA

Capacity At the end of the December quarter 1999, there were 318 accommodation establishments in Western Australia with 15 or more rooms, up 18 on the same period 12 months earlier. Over the same period, the total capacity of these establishments rose from 17,317 to 18,595 guest rooms, an increase of 7%. Both licensed hotels and serviced apartments recorded increases in capacity (up an average of 1 room and 5 rooms respectively), while the average in motels and guest houses remained static at 48 rooms.

Demand for accommodation increased marginally, the average nightly rooms occupied was 33.7 in the December quarter 1999, up slightly from 33.3 in the same period in 1998. Both licensed hotels and serviced apartment accommodation showed increased demand over this period while motels and guest houses showed a fall in average nightly rooms occupied, falling to 24.8 in the December quarter 1999 from 25.9 in the previous September quarter.

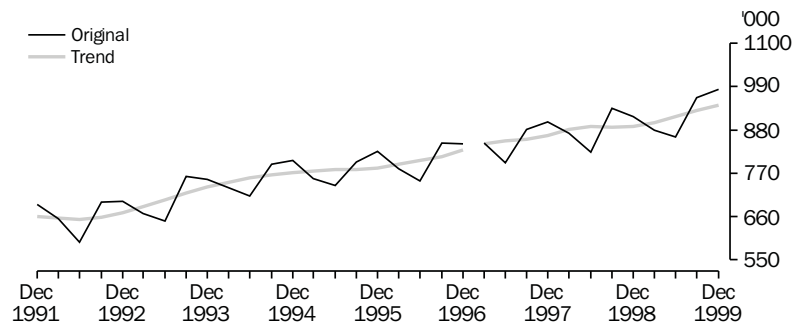
Takings from accommodation Takings from accommodation establishments during the December quarter 1999 totalled \$94.0 million, an increase of 8% from the corresponding period in 1998. Average takings per establishment increased 2%, from \$290,400 in the December quarter 1998 to \$295,600 in the December quarter 1999.

Average takings per room night occupied increased \$1 since the December quarter 1998 to be \$96, while average takings per room night available remained at \$55 at the December quarter 1999.

Average takings per guest night increased by \$1 to \$57 for the December quarter 1999, compared to the corresponding period in 1998. Both motels and guest houses and serviced apartments showed rises of \$3 each, whilst licensed hotels went against this trend, recording a drop of \$1 to \$68.

Room nights occupied For the December quarter 1999, the trend estimate of room nights occupied was 943,600 an increase of 6% (54,500 room nights) since the December quarter 1998. This continued the pattern of steady growth evident over the 8 year period.

QUARTERLY ROOM NIGHTS OCCUPIED, WA

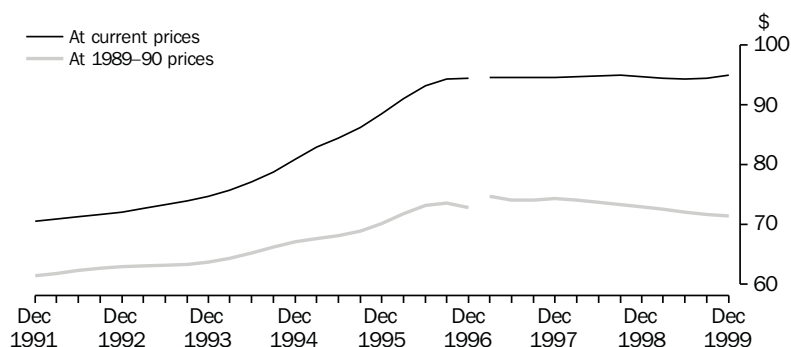


Notes: There is a break in series between December quarter 1996 and March quarter 1997 because of scope changes to STA. Refer to Explanatory Notes, paragraphs 3-7.

Average takings per room night occupied

In current prices, the trend estimate of average takings per room night occupied has varied by \$1, to finish on \$95 at the December quarter 1999 compared to the equivalent 1998 level. In terms of 1989–90 prices, the trend estimate has declined since the December 1997 quarter level of \$74 to be \$72 in the December quarter 1999.

AVERAGE TAKINGS PER ROOM NIGHT OCCUPIED, WA: Trend



Note: There is a break in series between December quarter 1996 and March quarter 1997 because of scope changes in STA. Refer to Explanatory Notes, paragraphs 3–7.

16

HOTELS, MOTELS, GUEST HOUSES AND SERVICED APARTMENTS—WA(a)

	Room nights occupied(b)			Takings at current prices(b)			Takings at average 1989–90 prices(c)		
	Original	Seasonally adjusted	Trend	Original	Seasonally adjusted	Trend	Original	Seasonally adjusted	Trend
	'000	'000	'000	\$m	\$m	\$m	\$m	\$m	\$m
1990	2 503.6	2 503.9	2 498.4	170.5	170.4	169.7	152.1	152.1	151.6
1991	2 566.6	2 562.9	2 556.0	180.2	179.9	179.9	157.6	157.4	157.2
1992	2 645.7	2 634.4	2 636.5	189.6	188.8	188.6	165.5	164.8	164.6
1993	2 835.3	2 836.0	2 841.5	209.0	209.0	209.4	179.7	179.7	180.1
1994	3 041.7	3 042.2	3 042.8	237.9	237.6	237.8	200.2	200.0	200.0
1995	3 119.8	3 121.9	3 117.6	266.8	266.8	266.7	214.3	214.3	214.3
1996	3 223.3	3 221.4	3 234.9	301.2	300.9	301.7	235.8	235.6	235.7
1997	3 424.9	3 424.6	3 420.3	323.8	323.7	323.5	253.8	253.7	254.1
1998	3 547.2	3 551.4	3 546.4	336.5	336.9	336.1	260.7	261.0	260.6
1999	3 686.1	3 689.6	3 686.7	348.4	349.0	348.8	265.2	265.7	265.3
1998									
Sep qtr	935.8	893.4	887.2	88.7	84.9	84.2	68.5	65.6	65.0
Dec qtr	914.8	882.6	889.1	87.1	83.7	84.2	66.9	64.3	64.9
1999									
Mar qtr	878.9	894.9	898.9	82.8	84.4	84.9	63.8	65.1	65.3
Jun qtr	861.7	924.7	914.0	81.4	87.5	86.3	62.2	66.9	65.9
Sep qtr	961.4	920.5	930.1	90.2	86.5	87.9	68.4	65.5	66.7
Dec qtr	984.1	949.6	943.6	94.0	90.6	89.6	70.7	68.2	67.5

(a) There is a break in series between December quarter 1996 and March quarter 1997 because of scope changes in the STA. Refer to Explanatory Notes, paragraphs 3 to 7.

(b) For presentation purposes the quarterly seasonally adjusted estimates for room nights occupied and takings at current prices are derived by summing the relevant monthly figures, while the quarterly trend estimates are derived from these quarterly seasonally adjusted figures.

(c) The deflator used to revalue current price data in this table is the Perth All Groups Consumer Price Index. See paragraphs 8 to 10 of the Explanatory Notes.

	Licensed hotels with facilities	Motels and guest houses	Serviced apart- ments	Star grading					Ungraded	Total
				1	2	3	4	5		
ESTABLISHMENTS AND CAPACITY										
	no.	no.	no.	no.	no.	no.	no.	no.	no.	no.
Dec qtr 1998										
Establishments	132	112	56	2	44	123	38	7	86	300
Guest rooms	9 266	5 424	2 627	n.p.	1 315	7 032	3 535	1 934	n.p.	17 317
Rooms per establishment	70	48	47	n.p.	30	57	93	276	n.p.	58
Dec qtr 1999										
Establishments	132	120	66	4	29	128	61	13	83	318
Guest rooms	9 429	5 752	3 414	91	995	7 274	5 160	2 392	2 683	18 595
Rooms per establishment	71	48	52	23	34	57	85	184	32	59
AVERAGE NIGHTLY ROOMS OCCUPIED PER ESTABLISHMENT										
	no.	no.	no.	no.	no.	no.	no.	no.	no.	no.
1998										
Dec qtr	42.0	25.9	27.5	n.p.	13.4	31.6	62.8	206.5	n.p.	33.3
1999										
Oct	46.5	28.3	33.1	5.5	16.4	32.9	63.1	138.9	16.4	36.9
Nov	46.6	25.5	31.1	4.1	15.4	30.7	61.2	141.2	15.6	35.4
Dec	36.7	20.7	28.1	3.6	13.0	24.9	49.6	114.4	13.0	28.9
Dec qtr	43.2	24.8	30.8	4.4	14.9	29.5	57.9	131.4	15.0	33.7
AVERAGE NIGHTLY GUESTS PER OCCUPIED ROOM										
	no.	no.	no.	no.	no.	no.	no.	no.	no.	no.
1998										
Dec qtr	1.5	1.7	2.4	n.p.	1.7	1.8	1.8	1.6	n.p.	1.7
1999										
Oct	1.5	1.7	2.2	1.7	1.6	1.7	1.7	1.6	1.5	1.7
Nov	1.4	1.6	2.1	1.6	1.6	1.7	1.6	1.6	1.4	1.6
Dec	1.6	1.8	2.4	1.9	1.8	1.8	1.9	1.8	1.6	1.8
Dec qtr	1.5	1.7	2.2	1.7	1.7	1.8	1.7	1.7	1.5	1.7
AVERAGE LENGTH OF STAY										
	days	days	days	days	days	days	days	days	days	days
1998										
Dec qtr	2.3	2.0	4.0	n.p.	1.9	2.2	3.1	3.0	n.p.	2.4
1999										
Oct	2.2	2.0	3.8	1.2	2.0	2.1	2.6	3.2	2.1	2.4
Nov	2.3	2.1	3.7	1.1	2.0	2.2	2.6	3.2	2.1	2.4
Dec	2.2	2.0	3.8	1.1	1.9	2.2	2.6	3.0	2.1	2.4
Dec qtr	2.2	2.0	3.8	1.2	2.0	2.2	2.6	3.1	2.1	2.4

	Licensed hotels with facilities	Motels and guest houses	Serviced apart- ments	Star grading						Total
				1	2	3	4	5	Ungraded	
TAKINGS FROM ACCOMMODATION										
	\$'000	\$'000	\$'000	\$'000	\$'000	\$'000	\$'000	\$'000	\$'000	\$'000
1998										
Dec qtr	52 931	20 196	13 993	n.p.	3 597	27 785	25 221	18 811	n.p.	87 120
1999										
Oct	19 199	8 389	6 293	41	1 028	9 820	12 714	7 785	2 493	33 881
Nov	19 217	7 165	5 801	28	907	8 936	12 289	7 771	2 251	32 183
Dec	15 684	6 155	6 112	26	847	7 805	10 662	6 582	2 030	27 950
Dec qtr	54 100	21 709	18 205	95	2 782	26 561	35 665	22 137	6 773	94 014
AVERAGE TAKINGS PER ESTABLISHMENT										
	\$'000	\$'000	\$'000	\$'000	\$'000	\$'000	\$'000	\$'000	\$'000	\$'000
1998										
Dec qtr	401.0	180.3	249.9	n.p.	81.8	225.9	663.7	2 687.3	n.p.	290.4
1999										
Oct	145.4	69.9	95.3	10.3	35.5	76.7	208.4	598.8	30.0	106.5
Nov	145.6	59.7	87.9	7.1	31.3	69.8	201.5	597.8	27.1	101.2
Dec	118.8	51.3	92.6	6.4	29.2	61.0	174.8	506.3	24.5	87.9
Dec qtr	409.8	180.9	275.8	23.8	95.9	207.5	584.7	1 702.9	81.6	295.6
AVERAGE TAKINGS PER ROOM NIGHT OCCUPIED										
	\$	\$	\$	\$	\$	\$	\$	\$	\$	\$
1998										
Dec qtr	104	76	100	n.p.	67	79	115	141	n.p.	95
1999										
Oct	101	80	94	61	70	75	107	139	60	93
Nov	104	78	95	58	68	76	110	141	58	95
Dec	105	80	107	57	73	79	114	143	62	99
Dec qtr	103	79	98	59	70	76	110	141	60	96
AVERAGE TAKINGS PER ROOM NIGHT AVAILABLE										
	\$	\$	\$	\$	\$	\$	\$	\$	\$	\$
1998										
Dec qtr	62	41	59	n.p.	30	44	78	106	n.p.	55
1999										
Oct	66	47	60	15	33	44	80	105	30	59
Nov	68	42	57	10	30	41	80	108	28	58
Dec	54	35	58	9	28	35	67	89	25	49
Dec qtr	62	41	58	11	30	40	75	101	28	55
AVERAGE TAKINGS PER GUEST NIGHT										
	\$	\$	\$	\$	\$	\$	\$	\$	\$	\$
1998										
Dec qtr	69	44	41	n.p.	39	45	63	88	n.p.	56
1999										
Oct	67	47	43	36	42	43	63	85	39	55
Nov	72	49	46	36	43	45	69	90	41	60
Dec	65	46	44	31	41	43	61	80	40	54
Dec qtr	68	47	44	34	42	44	64	85	40	57

Capacity In the December quarter 1999, there were 130 accommodation establishments in Tasmania with 15 rooms or more. In the 12 months to December 1999, the number of guest rooms rose slightly, from 5,509 to 5,546 (up 37). The majority of this increase occurred in licensed hotels (86% or 32 rooms) with motels and guest houses contributing 11% (or 4 rooms). Tasmania is showing almost no growth in serviced apartment capacity compared with all other States and Territories.

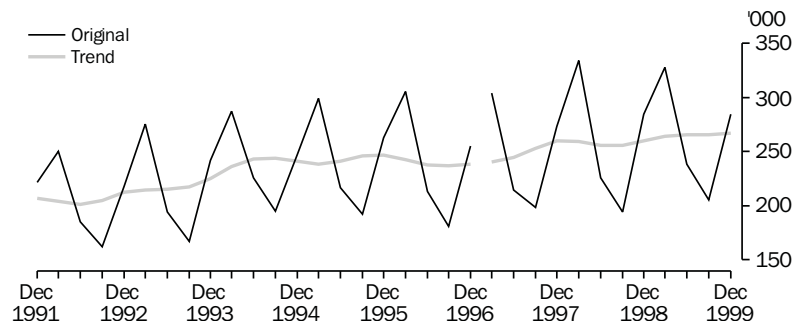
During the December quarter 1999, the average nightly rooms occupied per establishment was 23.9, down slightly on the December quarter 1998. Average nightly guests per occupied room remained at 1.8, and guests also stayed an average of 1.8 days per establishment. Guests in serviced apartments stayed longer at 2.2 days during the December quarter 1999, up from 2.1 a year ago, whilst guests in licensed hotels and motels and guest houses stayed 1.7 days compared to 1.8 days 12 months ago.

Takings from accommodation Total takings from accommodation were \$24.3 million in the December quarter 1999, a 6% decrease on the December quarter 1998 figure of \$25.9 million. On average, accommodation takings per establishment fell by 7% during this period, \$186,900 compared to \$200,700. Serviced apartments were the only accommodation type to show growth in average takings per establishment, increasing by 8% to \$219,400.

Average takings per room night occupied for all accommodation types decreased \$6 to \$85 compared to the same period a year ago. Average takings per guest night also declined, by \$4 to \$48 in the December quarter 1999.

Room nights occupied For the December quarter 1999, the trend estimate of room nights occupied was 267,300, a 3% increase on the December 1998 level. This represents a new high level of tourism activity after six consecutive quarterly increases (since June quarter 1998).

QUARTERLY ROOM NIGHTS OCCUPIED, Tas

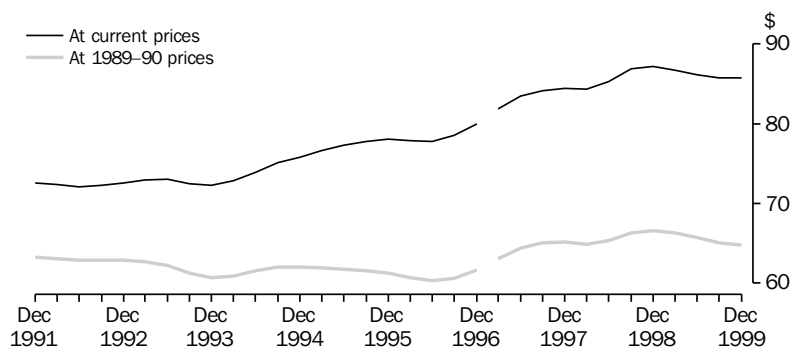


Notes: There is a break in series between December quarter 1996 and March quarter 1997 because of scope changes to STA. Refer to Explanatory Notes, paragraphs 3-7.

Average takings per room night occupied

Average takings per room night occupied, in both current and 1989–90 prices, had been on a downward trend since the (best on record) December quarter 1998 levels. In current prices, the trend estimate for the December quarter 1999 of \$86, represents a loss of \$1. The estimate in 1989–90 prices of \$65, reflects a decrease of \$2 since the December quarter 1998.

AVERAGE TAKINGS PER ROOM NIGHT OCCUPIED, Tas: Trend



Note: There is a break in series between December quarter 1996 and March quarter 1997 because of scope changes to STA. Refer to Explanatory Notes, paragraphs 3–7.

19

HOTELS, MOTELS, GUEST HOUSES AND SERVICED APARTMENTS—TAS.(a)

	Room nights occupied(b)			Takings at current prices(b)			Takings at average 1989–90 prices(c)		
	Original	Seasonally adjusted	Trend	Original	Seasonally adjusted	Trend	Original	Seasonally adjusted	Trend
	'000	'000	'000	\$m	\$m	\$m	\$m	\$m	\$m
1990	786.3	791.2	780.8	53.3	53.8	52.9	48.5	48.9	48.7
1991	817.4	816.9	815.8	58.2	58.3	58.2	51.3	51.3	51.2
1992	815.4	815.3	822.4	59.1	59.0	59.5	51.4	51.3	51.8
1993	878.6	876.6	872.1	63.9	63.7	63.4	54.2	54.1	53.8
1994	954.9	960.8	964.2	70.9	71.5	71.8	58.7	59.2	59.4
1995	970.1	976.1	972.5	75.0	75.5	75.3	59.7	60.0	59.9
1996	954.4	952.3	954.3	75.2	74.9	74.9	58.3	58.0	58.0
1997	990.3	995.9	997.5	82.5	83.2	83.3	63.7	64.2	64.3
1998	1 039.1	1 035.0	1 030.9	89.7	89.3	88.6	68.7	68.4	67.8
1999	1 056.3	1 060.1	1 062.9	90.1	90.7	91.5	68.6	69.0	69.6
1998									
Sep qtr	194.2	251.1	256.0	16.1	21.6	22.2	12.3	16.5	17.0
Dec qtr	284.7	268.0	260.1	25.9	24.0	22.7	19.7	18.3	17.3
1999									
Mar qtr	327.8	261.1	264.4	28.4	22.2	22.9	21.7	17.0	17.5
Jun qtr	238.6	265.6	265.3	20.1	22.7	22.8	15.4	17.3	17.4
Sep qtr	205.5	266.2	265.9	17.3	23.3	22.8	13.1	17.7	17.3
Dec qtr	284.3	267.2	267.3	24.3	22.6	22.9	18.3	17.0	17.3

(a) There is a break in series between December quarter 1996 and March quarter 1997 because of scope changes in the STA. Refer to Explanatory Notes, paragraphs 3 to 7.

(b) For presentation purposes the quarterly seasonally adjusted estimates for room nights occupied and takings at current prices are derived by summing the relevant monthly figures, while the quarterly trend estimates are derived from these quarterly seasonally adjusted figures.

(c) The deflator used to revalue current price data in this table is the Hobart All Groups Consumer Price Index. See paragraphs 8 to 10 of the Explanatory Notes.

	<i>Licensed hotels with facilities</i>	<i>Motels and guest houses</i>	<i>Serviced apart- ments</i>	<i>Star grading</i>				<i>Total</i>
				<i>1 and ungraded</i>	<i>2</i>	<i>3</i>	<i>4 and 5</i>	
ESTABLISHMENTS AND CAPACITY								
Dec qtr 1998	no.	no.	no.	no.	no.	no.	no.	no.
Establishments	54	51	24	27	12	62	28	129
Guest rooms	2 897	1 748	864	982	307	2 188	2 032	5 509
Rooms per establishment	54	34	36	36	26	35	73	43
Dec qtr 1999								
Establishments	55	51	24	9	15	73	33	130
Guest rooms	2 929	1 752	865	277	414	3 003	1 852	5 546
Rooms per establishment	53	34	36	31	28	41	56	43
AVERAGE NIGHTLY ROOMS OCCUPIED PER ESTABLISHMENT								
	no.	no.	no.	no.	no.	no.	no.	no.
1998								
Dec qtr	30.4	18.3	21.7	16.7	8.6	18.1	50.8	24
1999								
Oct	30.9	19	23.3	9.3	7.8	24	38.6	24.9
Nov	33.1	19.6	23.6	9.5	9	24.6	41.3	26
Dec	26	15.2	21.1	6.6	6.9	19.1	34.7	20.8
Dec qtr	29.9	17.9	22.7	8.4	7.9	22.5	38.2	23.9
AVERAGE NIGHTLY GUESTS PER OCCUPIED ROOM								
	no.	no.	no.	no.	no.	no.	no.	no.
1998								
Dec qtr	1.6	1.8	2.1	1.9	1.5	1.9	1.6	1.8
1999								
Oct	1.6	1.9	2.2	1.7	1.5	1.9	1.7	1.8
Nov	1.6	1.9	1.9	1.6	1.6	1.8	1.6	1.7
Dec	1.7	2.0	2.2	1.8	1.4	2.0	1.8	1.9
Dec qtr	1.6	1.9	2.1	1.7	1.5	1.9	1.7	1.8
AVERAGE LENGTH OF STAY								
	days	days	days	days	days	days	days	days
1998								
Dec qtr	1.8	1.8	1.9	1.7	1.5	1.7	2.0	1.8
1999								
Oct	1.7	1.7	2.1	2.3	1.5	1.7	1.9	1.8
Nov	1.7	1.7	2.2	2.3	1.8	1.7	1.8	1.8
Dec	1.8	1.7	2.2	2.1	1.7	1.8	1.9	1.8
Dec qtr	1.7	1.7	2.2	2.2	1.7	1.7	1.9	1.8

	Licensed hotels with facilities	Motels and guest houses	Serviced apart- ments	Star grading				Total
				1 and ungraded	2	3	4 and 5	
TAKINGS FROM ACCOMMODATION								
	\$'000	\$'000	\$'000	\$'000	\$'000	\$'000	\$'000	\$'000
1998								
Dec qtr	13 462	7 538	4 886	3 654	374	7 024	14 834	25 886
1999								
Oct	3 829	2 363	1 781	126	157	4 202	3 489	7 974
Nov	4 589	2 393	1 748	131	183	4 176	4 240	8 730
Dec	3 789	2 066	1 735	110	139	3 630	3 711	7 589
Dec qtr	12 207	6 822	5 264	368	479	12 007	11 439	24 293
AVERAGE TAKINGS PER ESTABLISHMENT								
	\$'000	\$'000	\$'000	\$'000	\$'000	\$'000	\$'000	\$'000
1998								
Dec qtr	249.3	147.8	203.6	135.3	31.2	113.3	529.8	200.7
1999								
Oct	69.6	46.3	74.2	14.0	10.5	57.6	105.7	61.3
Nov	83.4	46.9	72.8	14.6	12.2	57.2	128.5	67.2
Dec	68.9	40.5	72.3	12.2	9.2	49.7	112.4	58.4
Dec qtr	221.9	133.8	219.4	40.9	31.9	164.5	346.6	186.9
AVERAGE TAKINGS PER ROOM NIGHT OCCUPIED								
	\$	\$	\$	\$	\$	\$	\$	\$
1998								
Dec qtr	89	88	102	88	39	68	113	91
1999								
Oct	73	79	103	55	44	78	88	80
Nov	85	80	103	58	45	78	104	86
Dec	86	86	111	66	43	84	105	91
Dec qtr	81	81	105	59	44	79	99	85
AVERAGE TAKINGS PER ROOM NIGHT AVAILABLE								
	\$	\$	\$	\$	\$	\$	\$	\$
1998								
Dec qtr	51	47	62	40	13	35	79	51
1999								
Oct	43	44	66	17	12	45	61	47
Nov	53	46	67	18	15	46	76	53
Dec	42	38	65	14	11	39	65	44
Dec qtr	46	42	66	16	13	44	67	48
AVERAGE TAKINGS PER GUEST NIGHT								
	\$	\$	\$	\$	\$	\$	\$	\$
1998								
Dec qtr	56	48	49	48	27	37	69	52
1999								
Oct	46	40	47	33	30	41	52	45
Nov	55	43	55	36	28	44	63	51
Dec	50	44	51	36	30	43	58	48
Dec qtr	51	42	51	35	29	43	58	48

NORTHERN TERRITORY

Capacity At the end of the December quarter 1999, there were 88 accommodation establishments with 15 rooms or more in the Northern Territory, the same as the previous December quarter. The 88 establishments contained 6,226 guest rooms, 3% more than a year ago. Half of the guest rooms(3,124) were available in motels or guest house type accommodation and 31% available in licensed hotels.

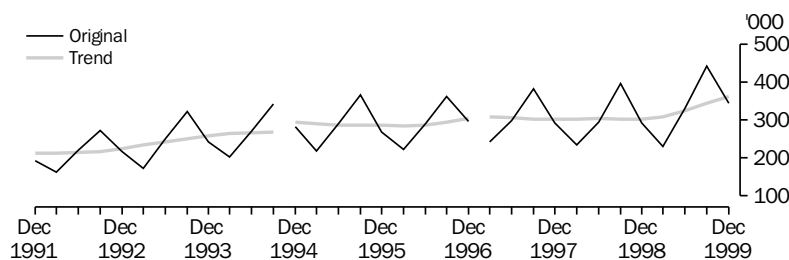
On average, accommodation facilities in the Northern Territory tend to be larger than in other States or Territories, the average number of guest rooms per establishment in the December quarter 1999 was 71. This was surpassed only by the Australian Capital Territory with an average of 81.

In the December quarter 1999, the average nightly number of rooms occupied per establishment was 42.6, up from 36.2 in the December quarter 1998. The increase occurred across all accommodation types, but was strongest in licensed hotels which rose 24% to 52.0.

Takings from accommodation Takings by accommodation establishments in the Northern Territory were \$36.9 million in the December quarter 1999, an increase of 23% (\$6.9 million) compared to the previous December quarter. The rise in takings, coupled with the stable number of establishments, also resulted in a 23% gain in average takings per establishment. The growth in average takings was highest in serviced apartments (33%), licensed hotels (31%), with motels and guest houses up 13%.

Room nights occupied The trend estimate of quarterly room nights occupied continues to show a strong upward movement evident since the December 1998 quarter. In the December quarter 1999, the estimate of 362,500 is 19% up compared to the December quarter 1998 level.

QUARTERLY ROOM NIGHTS OCCUPIED, NT

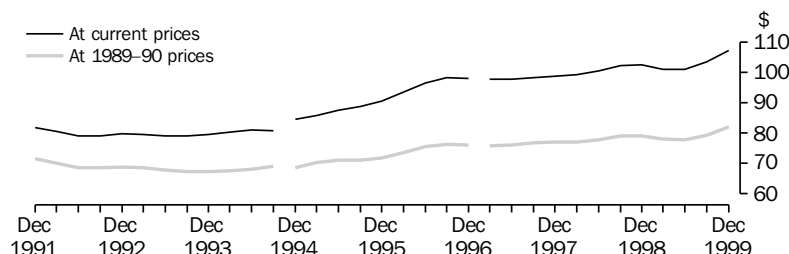


Notes: There is a break in series relating to the Northern Territory because two establishments previously classified as holiday units were reclassified as motels between the September and December quarters 1994.
There is a break in series between December quarter 1996 and March quarter 1997 because of scope changes in STA. Refer to Explanatory Notes, paragraphs 3-7.

Average takings per room night occupied

The trend estimate of average takings per room night occupied increased to new levels during the December quarter 1999 in both current and 1989–90 prices. The December quarter 1999 current price estimate of average takings per room night occupied of \$107 is up \$4 on the December quarter 1998 level. The comparable figure in 1989–90 prices of \$82 reflects an increase of \$3.

AVERAGE TAKINGS PER ROOM NIGHT OCCUPIED, NT: Trend



Notes: There is a break in series relating to the Northern Territory because two establishments previously classified as holiday units were reclassified as motels between the September and December quarters 1994.
There is a break in series between December quarter 1996 and March quarter 1997 because of scope changes to the STA. Refer to Explanatory Notes, paragraphs 3–7.

22

HOTELS, MOTELS, GUEST HOUSES AND SERVICED APARTMENTS—NT(a)

	Room nights occupied(b)			Takings at current prices(b)			Takings at average 1989–90 prices(c)		
	Original	Seasonally adjusted	Trend	Original	Seasonally adjusted	Trend	Original	Seasonally adjusted	Trend
	'000	'000	'000	\$m	\$m	\$m	\$m	\$m	\$m
1990	820.0	811.9	799.3	64.2	63.4	62.1	58.6	57.9	57.5
1991	817.6	814.5	818.8	66.6	66.2	66.5	58.7	58.4	58.6
1992	872.7	872.1	869.2	69.0	69.1	69.2	59.9	60.0	60.0
1993	989.8	985.1	986.7	78.6	78.3	78.3	67.0	66.8	66.9
1994	1 096.3	1 095.1	1 093.2	89.7	89.5	89.4	75.0	74.9	74.7
1995	1 146.4	1 145.4	1 148.9	101.3	100.9	101.4	81.3	81.2	81.7
1996	1 173.1	1 171.8	1 170.8	113.9	113.4	113.2	88.7	88.4	88.3
1997	1 217.7	1 219.4	1 218.5	119.8	119.9	119.6	93.2	93.3	93.1
1998	1 220.7	1 217.5	1 213.1	124.1	123.4	122.8	95.9	95.4	95.0
1999	1 347.9	1 335.6	1 342.5	139.0	137.9	138.8	106.7	105.9	106.6
1998									
Sep qtr	396.8	310.6	303.1	42.4	32.2	31.0	32.8	24.9	23.9
Dec qtr	293.2	306.6	303.4	30.0	31.8	31.2	23.1	24.5	24.0
1999									
Mar qtr	229.8	296.5	309.6	22.1	30.1	31.3	17.1	23.3	24.2
Jun qtr	330.5	331.0	325.3	33.1	32.8	32.9	25.5	25.2	25.3
Sep qtr	443.0	347.4	345.1	46.9	35.7	35.7	36.0	27.4	27.4
Dec qtr	344.6	360.7	362.5	36.9	39.4	38.9	28.2	30.0	29.7

(a) There is a break in series between December quarter 1996 and March quarter 1997 because of scope changes in the STA. Refer to Explanatory Notes, paragraphs 3 to 7.

(b) For presentation purposes the quarterly seasonally adjusted estimates for room nights occupied and takings at current prices are derived by summing the relevant monthly figures, while the quarterly trend estimates are derived from these quarterly seasonally adjusted figures.

(c) The deflator used to revalue current price data in this table is the Darwin All Groups Consumer Price Index. See paragraphs 8 to 10 of the Explanatory Notes.

	Licensed hotels with facilities	Motels and guest houses	Serviced apartments	1 and ungraded	Star grading			Total
					2	3	4 and 5	
ESTABLISHMENTS AND CAPACITY								
	no.	no.	no.	no.	no.	no.	no.	no.
Dec qtr 1998								
Establishments	24	48	16	18	24	35	11	88
Guest rooms	1 973	3 030	1 038	753	1 074	2 754	1 460	6 041
Rooms per establishment	82	63	65	42	45	79	133	69
Dec qtr 1999								
Establishments	23	48	17	18	20	34	16	88
Guest rooms	1 949	3 124	1 153	548	798	2 598	2 282	6 226
Rooms per establishment	85	65	68	30	40	76	143	71
AVERAGE NIGHTLY ROOMS OCCUPIED PER ESTABLISHMENT								
	no.	no.	no.	no.	no.	no.	no.	no.
1998								
Dec qtr	42.0	32.4	38.9	20.0	15.4	46.3	76.1	36.2
1999								
Oct	65.2	46.1	56.9	17.6	22.8	56.1	124.8	53.2
Nov	56.0	38.7	47.1	14.0	17.0	45.0	114.1	44.8
Dec	34.9	25.7	34.4	10.4	13.5	30.1	71.3	29.8
Dec qtr	52.0	36.8	46.1	14.0	17.8	43.7	103.3	42.6
AVERAGE NIGHTLY GUESTS PER OCCUPIED ROOM								
	no.	no.	no.	no.	no.	no.	no.	no.
1998								
Dec qtr	1.6	1.7	1.9	1.6	1.7	1.8	1.6	1.7
1999								
Oct	1.7	1.7	1.9	1.7	1.7	1.9	1.6	1.7
Nov	1.6	1.6	1.8	1.5	1.6	1.8	1.5	1.6
Dec	1.7	1.7	2.1	1.7	1.6	1.9	1.7	1.8
Dec qtr	1.7	1.7	1.9	1.7	1.7	1.9	1.6	1.7
AVERAGE LENGTH OF STAY								
	days	days	days	days	days	days	days	days
1998								
Dec qtr	1.7	1.7	2.8	1.5	1.6	1.9	2.2	1.9
1999								
Oct	1.9	1.9	3.2	2.8	1.9	1.9	2.3	2.1
Nov	1.7	1.8	2.9	2.2	1.8	1.8	2.1	1.9
Dec	1.7	1.9	2.7	1.8	1.7	1.9	2.2	2.0
Dec qtr	1.8	1.9	2.9	2.3	1.8	1.8	2.2	2.0

	Licensed hotels with facilities	Motels and guest houses	Serviced apart- ments	Star grading				Total
				1 and ungraded	2	3	4 and 5	
TAKINGS FROM ACCOMMODATION								
	\$'000	\$'000	\$'000	\$'000	\$'000	\$'000	\$'000	\$'000
1998								
Dec qtr	11 833	12 894	5 315	2 502	2 324	15 173	10 044	30 042
1999								
Oct	6 262	6 225	3 179	722	993	6 351	7 600	15 666
Nov	5 207	4 945	2 468	491	651	4 953	6 525	12 620
Dec	3 427	3 374	1 856	351	487	3 553	4 265	8 657
Dec qtr	14 896	14 544	7 503	1 564	2 131	14 858	18 390	36 943
AVERAGE TAKINGS PER ESTABLISHMENT								
	\$'000	\$'000	\$'000	\$'000	\$'000	\$'000	\$'000	\$'000
1998								
Dec qtr	493.0	268.6	332.2	139.0	96.8	433.5	913.0	341.4
1999								
Oct	272.2	129.7	187.0	40.1	49.7	186.8	475.0	178.0
Nov	226.4	103.0	145.2	27.3	32.5	145.7	407.8	143.4
Dec	149.0	70.3	109.2	19.5	24.4	104.5	266.6	98.4
Dec qtr	647.7	303.0	441.4	86.9	106.5	437.0	1 149.4	419.8
AVERAGE TAKINGS PER ROOM NIGHT OCCUPIED								
	\$	\$	\$	\$	\$	\$	\$	\$
1998								
Dec qtr	128	90	93	76	68	102	130	103
1999								
Oct	135	91	106	73	70	107	123	108
Nov	135	89	103	65	64	108	119	107
Dec	138	88	102	61	58	112	121	107
Dec qtr	135	90	104	67	65	109	121	107
AVERAGE TAKINGS PER ROOM NIGHT AVAILABLE								
	\$	\$	\$	\$	\$	\$	\$	\$
1998								
Dec qtr	65	46	56	36	24	60	75	54
1999								
Oct	104	64	89	43	40	79	107	81
Nov	89	53	71	30	27	64	95	68
Dec	57	35	52	21	20	44	60	45
Dec qtr	83	51	71	31	29	62	88	65
AVERAGE TAKINGS PER GUEST NIGHT								
	\$	\$	\$	\$	\$	\$	\$	\$
1998								
Dec qtr	78	52	49	48	40	56	79	59
1999								
Oct	81	53	56	43	41	58	76	62
Nov	82	56	58	42	40	61	78	65
Dec	81	53	50	35	36	58	73	60
Dec qtr	82	54	55	41	39	59	76	63

AUSTRALIAN CAPITAL
TERRITORY

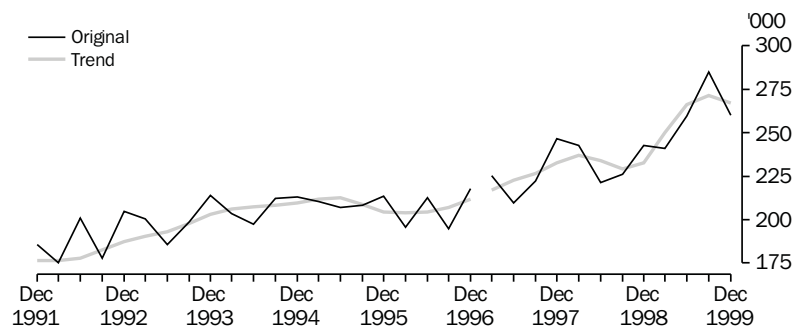
Capacity At the end of the December quarter 1999 there were 58 accommodation establishments with 15 rooms or more in the Australian Capital Territory, an increase of 5 since December 1998. The overall capacity of accommodation establishments rose by 185 guest rooms to 4,716 during this period, with serviced apartments accounting for 91% of the increase (168 new guest rooms). The average number of rooms per establishment across all accommodation types at the December quarter 1999 was 81 guest rooms, a decrease of 5 in comparison to the previous year.

Accommodation establishments in the Australian Capital Territory had on average 48.9 nightly rooms occupied in the December quarter 1999, down from 50.4 since December 1998. Within the quarter, the highest level of nightly rooms occupied occurred in the month of October 1999 with 56.1. On average, guests chose to stay 1.6 nights over the December quarter 1999, as against 1.7 nights for the corresponding 1998 period. Across all accommodation types, guests in serviced apartments stayed an average of 3.7 days while those in licensed hotels and motels and guest houses stayed for shorter periods (1.7 days and 1.9 days respectively).

Takings from accommodation Total takings from accommodation establishments were \$25.8 million in the December quarter 1999, a 6% increase (\$1.4 million) on the same period in 1998. Serviced apartments experienced a 23% increase in takings, motels and guest houses were up 4% and although licensed hotels decreased by 3%, their takings during the December quarter 1999 represented 43% of all takings. The month of December was the lowest in the quarter in terms of total takings for all accommodation types.

Room nights occupied The trend estimate of room nights occupied during the December quarter 1999 was 267,000, an increase of 15% on the December quarter 1998 but down 2% on the previous quarter (September 1999) after four consecutive quarters of strong growth.

QUARTERLY ROOM NIGHTS OCCUPIED, ACT

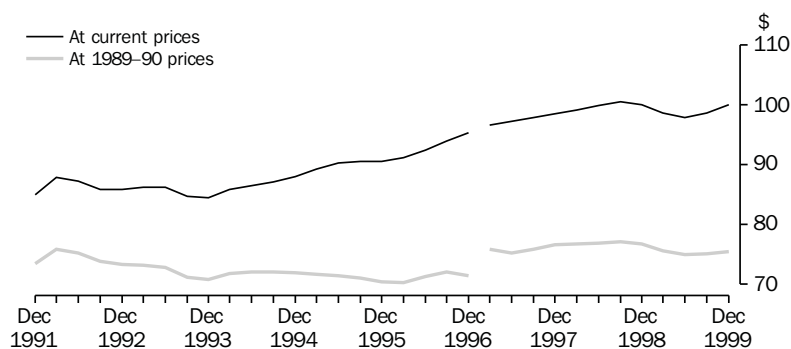


Notes: There is a break in series between December quarter 1996 and March quarter 1997 because of scope changes in STA. Refer to Explanatory Notes, paragraphs 3-7.

Average takings per room night occupied

Average takings per room night occupied, in both current and 1989–90 price terms, have increased for the second consecutive quarter. The current price trend estimate of \$100 for the December quarter 1999 is at the same level a year ago, but up 2% on the September 1999 level. The estimate in 1989–90 prices of \$76 is \$1 less than December quarter 1998.

AVERAGE TAKINGS PER ROOM NIGHT OCCUPIED, ACT: Trend



Note: There is a break in series between December quarter 1996 and March quarter 1997 because of scope changes to the STA. Refer to Explanatory Notes, paragraphs 3–7.

25

HOTELS, MOTELS, GUEST HOUSES AND SERVICED APARTMENTS—ACT(a)

	Room nights occupied(b)			Takings at current prices(b)			Takings at average 1989–90 prices(c)		
	Original	Seasonally adjusted	Trend	Original	Seasonally adjusted	Trend	Original	Seasonally adjusted	Trend
	'000	'000	'000	\$m	\$m	\$m	\$m	\$m	\$m
1990	694.6	696.3	699.6	56.8	56.9	57.0	51.3	51.4	51.5
1991	696.7	697.2	695.8	58.1	58.2	58.0	50.8	50.9	50.7
1992	758.9	755.9	724.1	62.9	62.5	62.8	54.1	53.8	54.0
1993	798.9	799.9	784.3	67.2	67.4	67.0	56.6	56.7	56.4
1994	826.4	829.7	831.8	71.6	72.0	72.3	59.4	59.7	59.8
1995	838.7	839.9	837.5	75.7	75.7	75.5	59.6	59.7	59.6
1996	821.5	819.2	826.7	76.5	76.3	77.1	58.8	58.7	59.0
1997	903.3	903.7	899.1	88.1	88.3	87.8	68.3	68.4	68.2
1998	933.1	934.5	932.8	93.5	93.5	93.2	71.9	71.9	71.7
1999	1 045.8	1 050.1	1 054.7	103.1	103.6	104.2	78.7	79.0	79.4
1998									
Sep qtr	226.0	230.2	229.3	22.5	23.1	23.0	17.3	17.8	17.7
Dec qtr	242.9	230.8	232.6	24.4	23.4	23.3	18.7	17.9	17.8
1999									
Mar qtr	241.1	243.4	250.1	23.7	24.0	24.6	18.2	18.4	18.9
Jun qtr	259.7	270.8	266.1	25.4	26.1	26.1	19.5	20.0	20.0
Sep qtr	284.9	287.8	271.6	28.2	28.5	26.8	21.5	21.7	20.4
Dec qtr	260.1	248.2	267.0	25.8	25.0	26.7	19.5	18.9	20.2

(a) There is a break in series between December quarter 1996 and March quarter 1997 because of scope changes in the STA. Refer to Explanatory Notes, paragraphs 3 to 7.

(b) For presentation purposes the quarterly seasonally adjusted estimates for room nights occupied and takings at current prices are derived by summing the relevant monthly figures, while the quarterly trend estimates are derived from these quarterly seasonally adjusted figures.

(c) The deflator used to revalue current price data in this table is the Canberra All Groups Consumer Price Index. See paragraphs 8 to 10 of the Explanatory Notes.

	Licensed hotels with facilities	Motels and guest houses	Serviced apartments	Star grading				Total
				1 and ungraded	2	3	4 and 5	
ESTABLISHMENTS AND CAPACITY								
	no.	no.	no.	no.	no.	no.	no.	no.
Dec qtr 1998								
Establishments	13	24	16	7	8	22	16	53
Guest rooms	1 667	1 728	1 136	503	483	1 733	1 812	4 531
Rooms per establishment	128	72	71	72	60	79	113	86
Dec qtr 1999								
Establishments	14	26	18	8	9	20	21	58
Guest rooms	1 681	1 731	1 304	377	587	1 399	2 353	4 716
Rooms per establishment	120	67	72	47	65	70	112	81
AVERAGE NIGHTLY ROOMS OCCUPIED PER ESTABLISHMENT								
	no.	no.	no.	no.	no.	no.	no.	no.
1998								
Dec qtr	81.2	39.4	41.7	22.3	31.6	47.3	75.4	50.4
1999								
Oct	83.6	43.4	53.0	23.7	43.6	45.0	83.9	56.1
Nov	75.6	39.2	49.2	23.1	38.7	42.0	75.7	51.1
Dec	62.9	28.8	37.2	18.9	29.8	31.1	59.9	39.6
Dec qtr	74.0	37.1	46.4	21.8	37.3	39.4	73.1	48.9
AVERAGE NIGHTLY GUESTS PER OCCUPIED ROOM								
	no.	no.	no.	no.	no.	no.	no.	no.
1998								
Dec qtr	1.5	1.8	1.9	1.8	2.2	1.8	1.6	1.7
1999								
Oct	1.5	1.7	1.8	2.0	1.8	1.7	1.6	1.7
Nov	1.4	1.7	1.7	1.8	1.7	1.7	1.4	1.6
Dec	1.5	1.7	1.8	1.8	1.8	1.8	1.6	1.7
Dec qtr	1.5	1.7	1.7	1.9	1.8	1.7	1.5	1.6
AVERAGE LENGTH OF STAY								
	days	days	days	days	days	days	days	days
1998								
Dec qtr	1.8	1.9	3.7	2.7	2.1	2	2.3	2.2
1999								
Oct	1.8	1.9	3.6	2.6	2.2	2.1	2.1	2.1
Nov	1.6	1.9	3.6	2.8	2.3	2.2	1.9	2.1
Dec	1.6	1.8	4	2.8	2.3	2.2	1.9	2.1
Dec qtr	1.7	1.9	3.7	2.7	2.3	2.1	2	2.1

	Licensed hotels with facilities	Motels and guest houses	Serviced apart- ments	Star grading				Total
				1 and ungraded	2	3	4 and 5	
TAKINGS FROM ACCOMMODATION								
	\$'000	\$'000	\$'000	\$'000	\$'000	\$'000	\$'000	\$'000
1998								
Dec qtr	11 557	6 431	6 403	1 042	1 573	7 990	13 786	24 391
1999								
Oct	4 460	2 644	2 961	364	821	2 121	6 760	10 066
Nov	3 634	2 289	2 737	423	673	1 932	5 632	8 661
Dec	3 133	1 775	2 179	383	563	1 488	4 653	7 087
Dec qtr	11 228	6 708	7 877	1 170	2 057	5 541	17 045	25 813
AVERAGE TAKINGS PER ESTABLISHMENT								
	\$'000	\$'000	\$'000	\$'000	\$'000	\$'000	\$'000	\$'000
1998								
Dec qtr	889.0	268.0	400.2	148.9	196.7	363.2	861.6	460.2
1999								
Oct	318.6	101.7	164.5	45.5	91.2	106.0	321.9	173.5
Nov	259.6	88.1	152.1	52.9	74.8	96.6	268.2	149.3
Dec	223.8	68.3	121.1	47.8	62.5	74.4	221.6	122.2
Dec qtr	802.0	258.0	437.6	146.3	228.5	277.1	811.7	445.1
AVERAGE TAKINGS PER ROOM NIGHT OCCUPIED								
	\$	\$	\$	\$	\$	\$	\$	\$
1998								
Dec qtr	119	75	108	81	68	83	124	100
1999								
Oct	123	76	103	69	68	76	124	101
Nov	115	75	103	76	64	77	118	98
Dec	115	77	105	82	68	77	119	99
Dec qtr	118	76	104	76	67	77	121	99
AVERAGE TAKINGS PER ROOM NIGHT AVAILABLE								
	\$	\$	\$	\$	\$	\$	\$	\$
1998								
Dec qtr	75	41	63	25	35	50	83	59
1999								
Oct	86	49	75	35	45	49	93	69
Nov	72	44	70	37	38	46	80	61
Dec	60	33	54	33	31	34	64	49
Dec qtr	73	42	66	35	38	43	79	60
AVERAGE TAKINGS PER GUEST NIGHT								
	\$	\$	\$	\$	\$	\$	\$	\$
1998								
Dec qtr	78	41	56	46	30	48	78	58
1999								
Oct	80	43	59	35	37	44	78	60
Nov	84	45	63	42	38	46	83	63
Dec	75	45	57	47	38	43	75	59
Dec qtr	80	44	59	41	38	44	79	61

INTERNATIONAL TOURISM

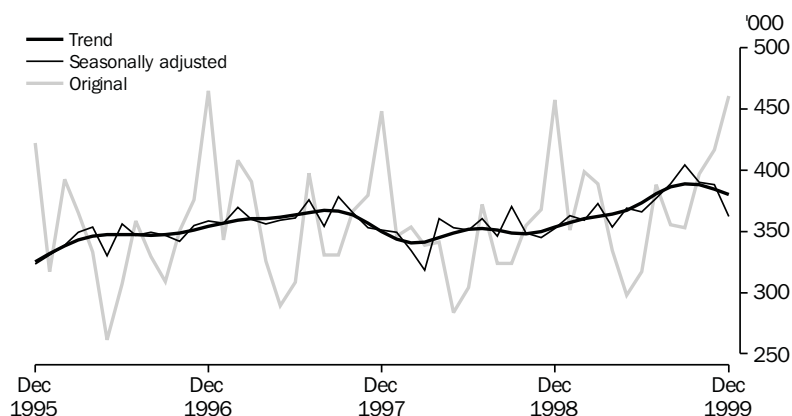
INTRODUCTION

The statistics presented in this section are sourced from the overseas arrivals and departures data obtained from incoming and outgoing passenger cards, collected by the Department of Immigration and Multicultural Affairs (DIMA). The data relate to short-term movements (less than 12 months) of visitors to or from Australia, and departures of Australian residents for short-term trips abroad. The statistics presented here supplement those already released in the monthly publication, *Overseas Arrivals and Departures, Australia* (ABS Cat. no. 3401.0).

VISITOR ARRIVALS

There were an estimated 1,274,400 short-term visitor arrivals to Australia during the December quarter 1999, an increase of 8% (94,100) on the corresponding 1998 quarter and an increase of 16% (177,200) on the September quarter 1999. In trend terms, this corresponded to a 10% increase on the December quarter 1998 and a slight decrease (0.3%) on the September quarter 1999.

OVERSEAS ARRIVALS, Short-term visitors—Total

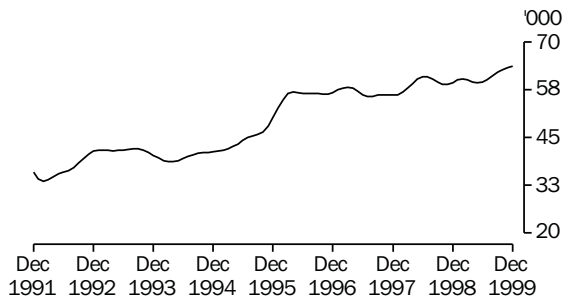


In original terms, the major source countries of visitor arrivals to Australia during the December quarter 1999 were NZ (15% or 190,500 of all arrivals), the UK (14% or 179,100), Japan (13% or 170,700) and the USA (9% or 115,700) (refer to table 28). Compared to the same period last year, NZ arrivals reflected an increase of 4%, the UK a 10% increase and the USA a 10% increase, while Japan recorded a 3% decrease. With the exception of Indonesia (down 30%), Africa (down 19%), Taiwan (down 7%) and Hong Kong (down 4%), all remaining countries recorded increases in visitor numbers to Australia during the December quarter 1999 compared to the same period in 1998.

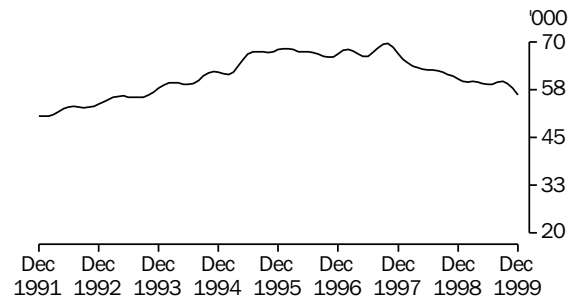
VISITOR ARRIVALS *continued*

Of the four major source countries show that NZ arrivals are growing at a steady pace, while Japanese visitor numbers, since peaking in 1997 have declined to 1993 levels. UK visitor patterns which had been particularly strong until September 1999, have recently commenced a seasonal decline, while arrivals from the USA continue to grow.

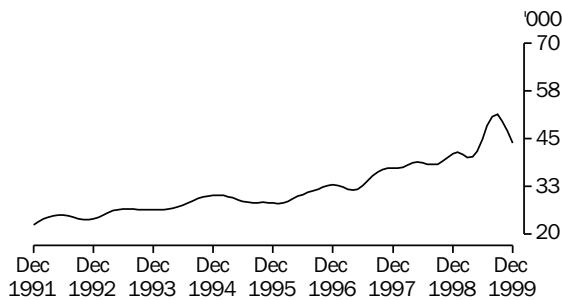
OVERSEAS ARRIVALS, Short-term visitors, NZ: Trend



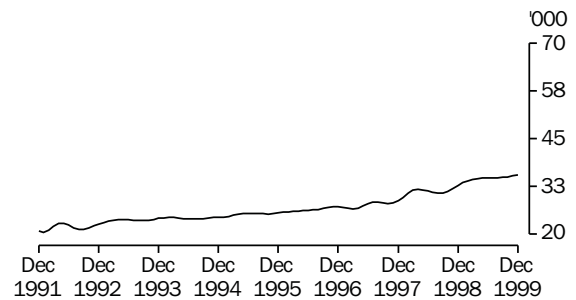
OVERSEAS ARRIVALS, Short-term visitors, Japan: Trend



OVERSEAS ARRIVALS, Short-term visitors, UK: Trend



OVERSEAS ARRIVALS, Short-term visitors, USA: Trend



The 1,274,400 visitors who arrived during the December quarter 1999 intended staying a total of 37.1 million person days (refer to tables 28 and 31), an increase of 17% over the corresponding period in 1998. This translated to a median intended stay of 11.0 days, an increase of 0.1 days over the median recorded during the December 1998 quarter.

Visitors from Europe still intend to have the longest median stay (25.7 days), while those from Northeast Asia have the shortest (7.3 days). At the country level, visitors from Switzerland still record the longest intended length of stay (30.3 days), while visitors from Japan still retain the shortest median stay (6.6 days).

UK visitors accounted for 14% of all arrivals during the December quarter 1999, for 26% (9.8 million) of the total person days to be spent here and planned to stay a median of 26.8 days. NZ visitors accounted for 15% of all arrivals during the quarter, for 9% (3.2 million) of the total person days to be spent here and intended to stay for a median of 9.6 days.

Purpose of journey	<p>The main purpose of journey for the majority of visitor arrivals in the December quarter 1999 were holidays (57% or 730,500) or visiting friends and relatives (22% or 281,300) (refer to table 30). All countries recorded holiday visits as the most popular reason for travel. The majority of holiday makers visiting Australia were from Japan (20% or 145,100), the UK (12% or 87,800) and NZ (12% or 84,600). The greatest proportion of the 281,300 visitors intending to visit friends and relatives were from the UK (24% or 68,200 visitors) and NZ (22% or 60,900).</p> <p>Business travel accounted for 9% of all arrivals (109,100), with most coming from NZ (22% or 24,500).</p>
Length of stay	<p>The majority of visitors (55% or 700,400) planned to spend less than two weeks in Australia during the December quarter 1999 (refer to table 32). Another 23% (97,400) intended staying for more than one month with 4% of these visitors (51,300) intending to stay for more than six months. Holidays were the most popular reason for travel regardless of the intended duration, with 31% (226,600) of holiday makers intending to stay between 1 to 2 weeks.</p> <p>Of the 170,700 visitor arrivals from Japan, 57% intended to stay for less than one week, with the majority of these (87,100) being for holiday purposes. Visitors from the UK were the largest group of travellers intending to stay for more than one month, accounting for 29% of the 297,400 visitors in this category.</p>
Age of visitors	<p>Visitors in the 25–34 year age group accounted for 25% of the overseas arrivals during the December quarter 1999, followed by those aged 35–44 years (18%) and 45–54 years (16%) (refer to table 33).</p> <p>Across all age groups, holidays and visiting friends and relatives were the two most popular reasons for travel.</p>

<i>Country of residence</i>	<i>Original</i>				<i>Change over Dec qtr 1998</i>	<i>Proportion of total visitors</i>	<i>Median intended length of stay</i>	<i>Person days</i>
	<i>Oct</i>	<i>Nov</i>	<i>Dec</i>	<i>Dec qtr 1999</i>				
	<i>'000</i>	<i>'000</i>	<i>'000</i>	<i>'000</i>	<i>%</i>	<i>%</i>	<i>days</i>	<i>'000</i>
Oceania and Antarctica								
New Zealand	71.8	60.4	58.2	190.5	3.5	14.9	9.6	3 215.5
Other	12.8	11.9	15.2	39.9	1.7	3.1	10.3	800.8
<i>Total</i>	84.6	72.2	73.5	230.3	3.2	18.1	9.9	4 016.3
Europe and the former USSR								
France	4.3	5.1	5.7	15.1	15.2	1.2	16.7	466.2
Germany	17.5	14.9	18.6	51.0	28.6	4.0	25.0	1 667.6
Italy	4.2	4.4	8.5	17.0	13.5	1.3	22.2	648.1
Netherlands	7.0	5.8	5.3	18.1	10.3	1.4	30.1	952.8
Switzerland	5.3	5.3	6.5	17.1	20.1	1.3	30.3	741.2
United Kingdom	54.3	67.6	57.2	179.1	9.6	14.1	26.8	9 846.8
Other	21.2	22.5	29.0	72.7	19.1	5.7	24.9	3 886.7
<i>Total</i>	113.7	125.7	130.8	370.2	14.7	29.0	25.7	18 209.3
Middle East and North Africa								
<i>Total</i>	3.0	3.4	6.2	12.7	20.3	1.0	21.3	567.7
Southeast Asia								
Indonesia	5.4	3.8	8.7	18.0	-29.7	1.4	12.3	581.5
Malaysia	10.6	12.5	14.7	37.7	24.3	3.0	10.1	721.6
Singapore	18.7	34.3	35.4	88.4	14.7	6.9	8.8	1 198.8
Thailand	7.4	4.3	5.9	17.5	18.6	1.4	8.3	409.1
Other	4.5	4.8	5.8	15.2	-1.3	1.2	11.0	538.5
<i>Total</i>	46.5	59.7	70.5	176.8	8.4	13.9	9.9	3 449.4
Northeast Asia								
China	9.5	9.0	9.1	27.6	39.0	2.2	10.6	993.1
Hong Kong (SAR of China)	10.7	10.4	13.3	34.3	-4.3	2.7	9.3	647.0
Japan	54.5	57.8	58.4	170.7	-3.1	13.4	6.6	2 184.2
Korea	10.1	12.4	14.7	37.2	55.8	2.9	7.1	911.5
Taiwan	7.8	9.9	10.1	27.8	-7.1	2.2	8.4	543.0
Other	0.2	0.2	0.1	0.6	-37.6	0.0	11.8	17.4
<i>Total</i>	92.8	99.6	105.7	298.1	4.0	23.4	7.3	5 296.2
Southern Asia								
<i>Total</i>	4.2	4.2	5.5	13.8	14.1	1.1	20.0	714.6
The Americas								
Canada	7.3	8.4	9.7	25.4	12.8	2.0	21.5	1 311.0
United States of America	36.4	34.2	45.1	115.7	10.4	9.1	13.7	2 518.0
Other	2.9	2.3	4.2	9.3	14.2	0.7	15.6	328.2
<i>Total</i>	46.5	44.9	59.0	150.4	11.1	11.8	14.4	4 157.2
Africa								
<i>Total</i>	5.2	6.5	9.2	20.8	-18.6	1.6	20.2	673.9
Other and not stated								
	0.4	0.5	0.5	1.3	59.5	0.1	11.0	39.2
Total	397.0	416.7	460.8	1 274.4	8.0	100.0	11.0	37 123.8

Country of residence	1999											
	Jan	Feb	Mar	Apr	May	Jun	Jul	Aug	Sep	Oct	Nov	Dec
	'000	'000	'000	'000	'000	'000	'000	'000	'000	'000	'000	'000
ORIGINAL												
Canada	8.1	9.3	8.0	4.9	3.9	3.5	5.6	4.6	5.1	7.2	8.4	9.7
Germany	12.2	15.8	12.5	9.4	6.9	7.2	9.6	9.1	10.9	17.5	14.9	18.6
Hong Kong (SAR of China)	8.7	20.6	11.6	10.0	7.5	9.9	15.4	10.8	10.7	10.7	10.4	13.3
Japan	60.6	61.8	71.4	56.4	52.3	46.1	63.6	69.8	54.7	54.5	57.8	58.4
Malaysia	7.5	16.0	9.8	10.6	16.7	8.1	9.8	10.0	13.6	10.6	12.5	14.7
New Zealand	47.1	40.0	55.9	59.4	52.5	67.7	67.6	72.8	75.3	71.8	60.4	58.2
Papua New Guinea	5.2	2.4	2.9	4.8	3.6	4.2	5.8	2.6	4.4	4.7	3.7	5.9
Singapore	9.8	21.7	21.1	15.3	19.9	35.2	17.1	16.9	21.6	18.7	34.3	35.4
United Kingdom	47.9	55.4	57.0	33.8	24.1	23.2	35.2	33.4	39.3	54.3	67.6	57.2
United States of America	32.6	41.6	39.7	31.1	25.8	35.6	37.8	30.1	27.1	36.4	34.2	45.1
Other and not stated	111.3	114.0	98.9	98.4	84.9	76.3	121.0	95.4	90.5	110.6	112.4	144.2
Total	351.0	398.6	389.0	334.1	298.1	317.1	388.5	355.6	353.1	397.0	416.7	460.8
SEASONALLY ADJUSTED												
Canada	6.3	7.3	6.6	6.3	6.3	5.6	5.6	6.3	6.8	7.0	6.6	7.2
Germany	10.4	12.5	10.5	10.5	11.4	12.3	11.4	12.0	12.8	12.7	13.1	14.4
Hong Kong (SAR of China)	11.1	11.3	11.0	10.7	11.0	11.2	12.9	12.4	15.5	12.0	13.1	10.0
Japan	59.8	58.8	60.8	60.3	60.1	58.7	58.6	56.5	56.6	65.9	63.4	52.9
Malaysia	13.2	10.1	11.4	11.1	12.7	10.3	11.6	11.3	14.6	12.2	10.0	14.1
New Zealand	61.1	60.4	63.3	58.1	58.5	60.6	54.4	66.2	62.0	63.3	65.9	55.7
Papua New Guinea	4.0	3.2	4.2	4.5	4.5	5.1	4.4	3.2	3.8	4.9	4.1	4.1
Singapore	20.7	19.8	23.0	19.7	22.4	23.1	25.9	25.8	26.9	23.3	24.2	17.9
United Kingdom	41.1	40.8	43.4	34.8	41.2	41.2	51.6	52.1	53.9	52.5	49.9	36.2
United States of America	33.9	33.9	35.5	32.8	34.6	36.7	32.8	35.8	37.0	32.7	31.4	42.1
Other and not stated	101.0	101.0	102.7	104.9	106.3	101.2	108.0	107.0	114.2	103.3	106.6	107.7
Total	362.6	359.3	372.4	353.7	368.9	366.0	377.4	388.6	404.1	389.8	388.3	362.1
TREND												
Canada	6.5	6.6	6.5	6.4	6.1	6.0	6.1	6.2	6.5	6.7	6.8	6.9
Germany	10.8	11.0	11.1	11.2	11.4	11.6	11.8	12.2	12.6	12.9	13.2	13.4
Hong Kong (SAR of China)	11.3	11.0	10.8	10.9	11.3	11.9	12.5	13.0	13.1	12.8	12.3	11.8
Japan	59.8	59.6	59.7	59.6	59.2	58.9	59.0	59.5	59.7	59.2	58.0	56.2
Malaysia	11.0	11.3	11.4	11.4	11.4	11.5	11.8	12.0	12.2	12.5	12.8	13.2
New Zealand	60.1	60.3	60.1	59.6	59.3	59.5	60.2	61.1	62.1	62.8	63.3	63.8
Papua New Guinea	3.9	4.0	4.2	4.3	4.4	4.4	4.4	4.3	4.2	4.0	3.8	3.6
Singapore	19.6	20.2	20.9	21.8	22.8	23.9	24.9	25.3	24.9	24.1	23.0	22.0
United Kingdom	41.4	40.9	40.2	40.3	41.8	44.8	48.4	50.9	51.4	49.7	47.0	43.9
United States of America	33.5	34.0	34.3	34.5	34.8	34.8	34.8	34.8	34.9	35.0	35.3	35.6
Other and not stated	99.2	101.4	102.8	103.9	104.9	105.9	106.7	107.2	107.6	108.1	108.9	109.8
Total	357.2	360.2	362.0	364.0	367.4	373.3	380.5	386.4	389.0	387.9	384.5	380.3

<i>Country of residence</i>	<i>Main purpose of journey</i>							<i>Total</i>
	<i>Convention/ conference</i>	<i>Business</i>	<i>Visiting friends/ relatives</i>	<i>Holiday</i>	<i>Employment</i>	<i>Education</i>	<i>Other and not stated</i>	
	'000	'000	'000	'000	'000	'000	'000	'000
<i>Oceania and Antarctica</i>								
New Zealand	4.1	24.5	60.9	84.6	2.3	1.5	12.6	190.5
Other	1.3	3.3	8.3	17.6	0.3	1.5	7.7	39.9
<i>Total</i>	5.4	27.8	69.2	102.1	2.6	3.0	20.2	230.3
<i>Europe and the former USSR</i>								
France	0.5	1.9	3.2	7.3	0.1	0.1	2.0	15.1
Germany	0.7	3.0	7.0	37.3	0.2	0.4	2.4	51.0
Italy	0.2	1.2	4.0	9.7	0.2	0.1	1.6	17.0
Netherlands	0.3	1.3	4.8	10.3	0.2	0.1	1.2	18.1
Switzerland	0.2	1.0	2.5	12.1	0.1	0.4	0.7	17.1
United Kingdom	2.6	8.3	68.2	87.8	2.3	0.9	9.0	179.1
Other	1.8	5.1	19.1	37.8	1.1	1.3	6.6	72.7
<i>Total</i>	6.3	21.8	108.9	202.3	4.2	3.2	23.6	370.2
<i>Middle East and North Africa</i>								
<i>Total</i>	0.4	0.9	4.2	5.5	0.2	0.2	1.3	12.7
<i>Southeast Asia</i>								
Indonesia	0.4	1.9	3.5	8.3	0.2	1.7	2.0	18.0
Malaysia	0.7	1.8	8.1	23.6	0.1	1.1	2.4	37.7
Singapore	1.3	7.5	8.6	65.8	0.2	1.9	3.0	88.4
Thailand	0.6	1.1	2.4	10.5	0.1	1.2	1.6	17.5
Other	0.6	1.5	4.2	5.8	0.3	0.7	2.1	15.2
<i>Total</i>	3.7	13.8	26.8	114.0	0.8	6.5	11.2	176.8
<i>Northeast Asia</i>								
China	1.4	7.6	4.2	9.6	0.1	1.2	3.4	27.6
Hong Kong (SAR of China)	0.6	3.8	7.0	19.7	0.1	1.3	1.8	34.3
Japan	1.2	6.8	5.9	145.1	0.4	2.0	9.4	170.7
Korea	0.9	2.5	5.0	22.8	0.2	1.8	3.9	37.2
Taiwan	0.4	1.2	1.5	21.0	0.0	1.0	2.7	27.8
Other	0.0	0.1	0.2	0.3	0.0	0.0	0.0	0.6
<i>Total</i>	4.6	22.0	23.7	218.4	0.9	7.3	21.3	298.1
<i>Southern Asia</i>								
<i>Total</i>	0.7	1.6	3.5	5.4	0.2	0.9	1.4	13.8
<i>The Americas</i>								
Canada	0.7	1.9	7.9	12.7	0.4	0.2	1.6	25.4
United States of America	4.5	16.6	27.7	56.9	0.8	1.1	8.1	115.7
Other	0.4	0.5	2.3	4.4	0.0	0.5	1.2	9.3
<i>Total</i>	5.5	19.1	37.9	74.1	1.2	1.8	10.9	150.4
<i>Africa</i>								
<i>Total</i>	0.6	2.2	7.0	8.7	0.2	0.2	1.9	20.8
<i>Not stated</i>								
	0.0	0.0	0.1	0.0	0.0	0.0	1.2	1.3
Total	27.1	109.1	281.3	730.5	10.2	23.1	93.0	1 274.4

Country of residence	Main purpose of journey							Total
	Convention/ conference	Business	Visiting friends/ relatives	Holiday	Employment	Education	Other and not stated	
	'000	'000	'000	'000	'000	'000	'000	'000
Oceania and Antarctica								
New Zealand	25.5	215.6	1 251.7	1 107.3	383.6	46.8	185.2	3 215.5
Other	13.5	37.3	289.7	299.6	9.8	76.6	74.3	800.8
<i>Total</i>	39.0	252.9	1 541.3	1 406.9	393.4	123.4	259.5	4 016.3
Europe and the former USSR								
France	3.8	40.3	128.9	201.2	18.2	22.4	51.5	466.2
Germany	8.8	68.6	304.4	1 150.2	38.6	42.2	54.9	1 667.6
Italy	3.0	16.6	219.2	351.3	11.9	12.0	34.1	648.1
Netherlands	3.7	23.1	211.1	589.7	41.2	4.6	79.5	952.8
Switzerland	2.2	20.8	106.7	520.5	9.6	58.1	23.2	741.2
United Kingdom	37.1	200.1	3 170.3	5 367.1	532.5	74.4	465.5	9 846.8
Other	24.5	132.0	977.4	2 034.1	265.9	169.6	283.3	3 886.7
<i>Total</i>	83.0	501.5	5 117.9	10 214.0	917.9	383.2	991.9	18 209.3
Middle East and North Africa								
<i>Total</i>	5.2	16.9	221.4	238.8	21.4	32.0	32.1	567.7
Southeast Asia								
Indonesia	3.6	33.7	81.0	141.8	9.9	267.3	44.2	581.5
Malaysia	5.8	24.3	217.5	267.5	16.7	148.2	41.6	721.6
Singapore	10.8	77.1	195.9	666.0	15.4	187.0	46.6	1 198.8
Thailand	6.1	18.6	79.7	128.2	5.1	147.7	23.9	409.1
Other	6.7	30.1	234.4	123.0	16.2	82.8	45.4	538.5
<i>Total</i>	32.9	183.8	808.4	1 326.3	63.3	833.1	201.6	3 449.4
Northeast Asia								
China	17.1	151.4	471.5	143.2	12.0	118.4	79.5	993.1
Hong Kong (SAR of China)	4.6	50.5	147.5	196.7	10.5	203.0	34.2	647.0
Japan	10.7	122.1	127.3	1 462.9	28.9	251.0	181.3	2 184.2
Korea	7.4	46.5	195.3	332.1	14.3	227.2	88.6	911.5
Taiwan	5.2	30.0	49.7	249.5	2.7	168.8	37.2	543.0
Other	0.2	2.1	5.4	3.6	0.0	4.8	1.3	17.4
<i>Total</i>	45.3	402.6	996.5	2 387.9	68.4	973.3	422.2	5 296.2
Southern Asia								
<i>Total</i>	9.6	50.0	239.0	156.5	41.7	160.3	57.5	714.6
The Americas								
Canada	7.1	49.8	313.9	772.4	87.8	25.9	54.1	1 311.0
United States of America	50.8	307.2	777.2	1 020.3	75.6	82.7	204.3	2 518.0
Other	3.7	8.2	130.5	106.5	2.3	54.7	22.3	328.2
<i>Total</i>	61.6	365.2	1 221.7	1 899.3	165.7	163.2	280.6	4 157.2
Africa								
<i>Total</i>	7.2	53.2	282.6	248.5	27.7	19.5	35.3	673.9
Not stated								
	0.0	0.1	3.3	1.3	0.4	0.4	33.8	39.2
Total	283.8	1 826.3	10 432.1	17 879.4	1 699.7	2 688.2	2 314.4	37 123.8

Purpose of journey	Intended length of stay							Total(a)
	Under 1 week	1 week and under 2 weeks	2 weeks and under 1 month	1 month and under 2 months	2 months and under 3 months	3 months and under 6 months	6 months and under 12 months	
	'000	'000	'000	'000	'000	'000	'000	'000
JAPAN								
Convention/conference	0.5	0.6	0.1	0.0	0.0	0.0	0.0	1.1
Business	4.3	1.5	0.4	0.4	0.0	0.1	0.2	6.8
Visiting friends/relatives	1.8	1.6	1.6	0.7	0.0	0.1	0.2	5.9
Holiday	87.1	47.5	6.2	1.6	0.5	1.1	1.1	145.1
Employment	0.2	0.1	0.0	0.0	0.0	0.0	0.1	0.4
Education	0.2	0.2	0.1	0.2	0.2	0.5	0.7	2.0
Other and not stated(b)	3.1	5.5	0.2	0.1	0.1	0.1	0.3	9.4
<i>Total</i>	<i>97.1</i>	<i>56.9</i>	<i>8.6</i>	<i>2.9</i>	<i>0.8</i>	<i>1.9</i>	<i>2.5</i>	<i>170.7</i>
NEW ZEALAND								
Convention/conference	2.8	1.3	0.0	0.0	0.0	0.0	0.0	4.1
Business	18.4	4.0	1.2	0.5	0.2	0.1	0.2	24.5
Visiting friends/relatives	13.6	19.9	17.4	5.6	1.8	1.2	1.2	60.8
Holiday	24.4	34.9	20.1	3.1	1.0	0.6	0.5	84.6
Employment	0.2	0.1	0.1	0.2	0.4	0.3	1.0	2.3
Education	0.7	0.6	0.0	0.0	0.0	0.1	0.1	1.5
Other and not stated(b)	4.8	6.4	0.8	0.2	0.1	0.1	0.3	12.6
<i>Total</i>	<i>64.9</i>	<i>67.3</i>	<i>39.6</i>	<i>9.5</i>	<i>3.5</i>	<i>2.4</i>	<i>3.3</i>	<i>190.5</i>
SINGAPORE								
Convention/conference	0.6	0.6	0.1	0.0	0.0	0.0	0.0	1.3
Business	4.0	2.0	0.9	0.3	0.2	0.0	0.0	7.5
Visiting friends/relatives	1.3	2.8	2.4	1.3	0.3	0.5	0.1	8.6
Holiday	18.0	36.2	9.8	1.5	0.1	0.1	0.1	65.8
Employment	0.0	0.1	0.0	0.0	0.0	0.0	0.0	0.2
Education	0.2	0.2	0.3	0.1	0.3	0.3	0.4	1.9
Other and not stated(b)	0.6	2.0	0.2	0.2	0.0	0.0	0.0	3.1
<i>Total</i>	<i>24.7</i>	<i>43.9</i>	<i>13.7</i>	<i>3.4</i>	<i>1.0</i>	<i>1.0</i>	<i>0.7</i>	<i>88.4</i>
TAIWAN								
Convention/conference	0.3	0.1	0.0	0.1	0.0	0.0	0.0	0.4
Business	0.3	0.6	0.1	0.0	0.0	0.0	0.1	1.2
Visiting friends/relatives	0.2	0.5	0.3	0.4	0.1	0.1	0.1	1.5
Holiday	6.0	12.9	1.2	0.4	0.1	0.2	0.3	21.0
Employment	0.0	0.0	0.0	0.0	0.0	0.0	0.0	0.0
Education	0.0	0.1	0.0	0.0	0.1	0.2	0.6	1.0
Other and not stated(b)	0.6	1.8	0.1	0.0	0.0	0.0	0.0	2.7
<i>Total</i>	<i>7.4</i>	<i>15.9</i>	<i>1.8</i>	<i>0.9</i>	<i>0.3</i>	<i>0.5</i>	<i>1.0</i>	<i>27.8</i>
UNITED KINGDOM								
Convention/conference	0.3	1.6	0.4	0.2	0.1	0.0	0.0	2.6
Business	2.9	2.4	1.4	0.8	0.2	0.4	0.2	8.3
Visiting friends/relatives	2.1	4.7	23.9	20.1	6.1	8.3	3.1	68.3
Holiday	5.0	8.9	33.0	18.0	5.2	7.4	10.5	87.8
Employment	0.1	0.1	0.1	0.2	0.0	0.3	1.5	2.3
Education	0.1	0.3	0.0	0.1	0.3	0.0	0.2	0.9
Other and not stated(b)	0.7	5.4	0.8	0.3	0.4	0.3	1.0	9.0
<i>Total</i>	<i>11.2</i>	<i>23.4</i>	<i>59.6</i>	<i>39.7</i>	<i>12.2</i>	<i>16.6</i>	<i>16.5</i>	<i>179.1</i>

(a) Includes 'Not stated'.

(b) Includes 'Exhibition' from July 1998.

...continued

Purpose of journey	Intended length of stay							Total(a)
	Under 1 week	1 week and under 2 weeks	2 weeks and under 1 month	1 month and under 2 months	2 months and under 3 months	3 months and under 6 months	6 months and under 12 months	
	'000	'000	'000	'000	'000	'000	'000	'000
UNITED STATES OF AMERICA								
Convention/conference	1.4	2.2	0.8	0.0	0.0	0.0	0.1	4.5
Business	6.4	5.7	2.8	0.8	0.4	0.3	0.4	16.6
Visiting friends/relatives	1.4	5.7	13.3	4.4	1.1	1.1	0.8	27.7
Holiday	9.8	20.3	20.4	3.9	1.1	0.9	0.6	56.9
Employment	0.0	0.2	0.2	0.1	0.0	0.1	0.2	0.8
Education	0.1	0.1	0.3	0.1	0.2	0.2	0.2	1.1
Other and not stated(b)	1.8	3.9	1.3	0.3	0.2	0.3	0.3	8.1
Total	20.8	38.0	39.0	9.5	3.1	2.8	2.5	115.7
OTHER AND NOT STATED								
Convention/conference	3.7	6.5	2.5	0.3	0.1	0.1	0.0	13.1
Business	15.0	14.9	7.7	2.8	1.3	1.6	0.8	44.2
Visiting friends/relatives	8.1	17.3	27.3	26.2	9.9	13.0	6.6	108.5
Holiday	57.4	66.0	70.7	41.5	11.5	13.3	8.9	269.4
Employment	0.5	1.0	0.2	0.2	0.2	0.3	1.9	4.2
Education	0.5	2.5	1.1	1.2	1.4	3.2	4.9	14.8
Other and not stated(b)	11.2	24.5	5.0	2.8	1.4	1.9	1.6	48.3
Total	96.3	132.6	114.5	75.0	25.7	33.4	24.8	502.3
TOTAL								
Convention/conference	9.4	12.9	4.0	0.6	0.1	0.1	0.1	27.1
Business	51.4	31.0	14.4	5.5	2.3	2.6	1.9	109.1
Visiting friends/relatives	28.4	52.4	86.2	58.7	19.3	24.2	12.1	281.3
Holiday	207.8	226.6	161.4	69.8	19.5	23.5	22.0	730.6
Employment	0.9	1.7	0.6	0.7	0.7	1.0	4.7	10.2
Education	1.7	3.9	1.8	1.8	2.4	4.5	6.9	23.1
Other and not stated(b)	22.8	49.5	8.4	3.9	2.1	2.7	3.6	93.0
Total	322.4	378.0	276.7	140.9	46.5	58.7	51.3	1 274.4

(a) Includes 'Not stated'.

(b) Includes 'Exhibition' from July 1998.

Purpose of journey	Age group (years)							Total
	0-14	15-24	25-34	35-44	45-54	55-64	65 and over	
	'000	'000	'000	'000	'000	'000	'000	'000
JAPAN								
Convention/conference	0.0	0.1	0.4	0.3	0.2	0.2	0.0	1.2
Business	0.0	0.4	1.9	2.1	1.9	0.4	0.2	6.8
Visiting friends/relatives	0.4	1.2	2.3	0.7	0.4	0.7	0.3	5.9
Holiday	5.7	26.5	51.4	17.1	18.6	16.6	9.2	145.1
Employment	0.0	0.0	0.0	0.1	0.2	0.1	0.0	0.4
Education	0.1	1.3	0.6	0.1	0.0	0.0	0.0	2.0
Other and not stated(a)	0.4	1.6	3.6	1.4	1.3	0.9	0.2	9.4
<i>Total</i>	6.5	31.0	60.2	21.7	22.5	19.0	9.8	170.7
NEW ZEALAND								
Convention/conference	0.0	0.2	0.8	1.0	1.7	0.5	0.0	4.1
Business	0.0	0.7	5.9	8.4	6.6	2.4	0.6	24.6
Visiting friends/relatives	7.8	7.7	11.2	8.2	10.0	7.8	8.2	60.9
Holiday	10.3	10.7	18.8	15.1	14.7	8.6	6.3	84.6
Employment	0.0	1.2	0.7	0.2	0.2	0.0	0.1	2.3
Education	0.1	0.4	0.3	0.3	0.4	0.1	0.0	1.5
Other and not stated(a)	1.3	1.3	2.7	2.7	2.4	1.5	0.9	12.6
<i>Total</i>	19.6	22.1	40.3	35.8	35.9	20.8	16.1	190.5
SINGAPORE								
Convention/conference	0.0	0.1	0.5	0.6	0.1	0.0	0.0	1.3
Business	0.0	0.1	2.4	3.0	1.6	0.3	0.1	7.5
Visiting friends/relatives	1.9	0.7	1.4	1.3	1.4	1.0	0.9	8.6
Holiday	12.4	7.5	13.9	14.6	10.3	4.3	2.9	65.8
Employment	0.0	0.0	0.1	0.1	0.0	0.0	0.0	0.2
Education	0.2	1.2	0.3	0.2	0.0	0.0	0.0	1.9
Other and not stated(a)	0.4	0.3	0.7	0.7	0.7	0.3	0.1	3.1
<i>Total</i>	14.9	9.8	19.3	20.4	14.1	6.0	3.9	88.4
TAIWAN								
Convention/conference	0.0	0.0	0.1	0.1	0.2	0.0	0.0	0.4
Business	0.0	0.0	0.5	0.4	0.2	0.0	0.0	1.2
Visiting friends/relatives	0.1	0.2	0.3	0.2	0.3	0.2	0.3	1.5
Holiday	0.9	1.9	8.0	3.1	3.1	2.4	1.5	21.0
Employment	0.0	0.0	0.0	0.0	0.0	0.0	0.0	0.0
Education	0.1	0.6	0.2	0.0	0.0	0.0	0.0	1.0
Other and not stated(a)	0.1	0.3	0.9	0.4	0.4	0.3	0.2	2.7
<i>Total</i>	1.2	3.0	10.1	4.2	4.3	3.0	2.0	27.8
UNITED KINGDOM								
Convention/conference	0.0	0.1	0.6	0.5	0.9	0.4	0.1	2.6
Business	0.0	0.2	1.8	3.6	1.9	0.7	0.3	8.3
Visiting friends/relatives	2.7	5.3	12.6	8.6	10.7	14.5	14.0	68.3
Holiday	3.1	15.2	26.3	11.7	11.2	11.5	8.8	87.8
Employment	0.0	0.8	1.0	0.4	0.1	0.0	0.0	2.3
Education	0.1	0.3	0.2	0.1	0.1	0.1	0.0	0.9
Other and not stated(a)	0.4	1.2	2.4	1.8	1.1	0.7	1.3	9.0
<i>Total</i>	6.2	23.1	44.9	26.6	26.0	28.0	24.4	179.1

(a) Includes 'Exhibition' from July 1998.

...continued

Purpose of journey	Age group (years)							Total
	0-14	15-24	25-34	35-44	45-54	55-64	65 and over	
	'000	'000	'000	'000	'000	'000	'000	'000
UNITED STATES OF AMERICA								
Convention/conference	0.0	0.1	0.6	1.5	1.3	0.8	0.1	4.5
Business	0.0	0.4	3.4	5.4	5.0	2.1	0.3	16.6
Visiting friends/relatives	2.6	3.8	5.7	5.5	4.3	3.3	2.6	27.7
Holiday	3.4	4.1	10.7	9.0	8.5	9.4	11.9	56.9
Employment	0.1	0.1	0.1	0.3	0.1	0.0	0.1	0.8
Education	0.0	0.8	0.1	0.0	0.0	0.0	0.1	1.1
Other and not stated	0.5	0.8	1.8	1.7	1.4	1.2	0.7	8.1
Total	6.6	10.0	22.5	23.5	20.6	16.8	15.9	115.7
OTHER AND NOT STATED(a)								
Convention/conference	0.0	0.4	3.0	4.2	3.6	1.6	0.2	13.1
Business	0.0	1.4	10.8	15.9	11.2	4.2	0.5	44.2
Visiting friends/relatives	8.2	10.8	19.6	16.2	18.8	18.8	16.1	108.5
Holiday	19.1	31.2	75.8	47.3	42.3	35.7	18.1	269.4
Employment	0.0	1.1	1.4	0.9	0.5	0.2	0.1	4.2
Education	1.0	7.5	3.8	1.5	0.6	0.3	0.1	14.8
Other and not stated(a)	3.1	5.4	12.2	10.4	8.1	5.9	3.2	48.3
Total	31.4	57.9	126.4	96.5	85.1	66.8	38.2	502.3
TOTAL								
Convention/conference	0.0	0.9	6.1	8.3	8.0	3.5	0.4	27.1
Business	0.0	3.1	26.7	38.7	28.5	10.2	1.9	109.1
Visiting friends/relatives	23.6	29.7	53.0	40.5	45.9	46.4	42.3	281.3
Holiday	54.9	97.0	204.8	117.8	108.8	88.6	58.6	730.5
Employment	0.1	3.2	3.3	2.0	1.1	0.4	0.2	10.2
Education	1.6	12.0	5.5	2.2	1.1	0.5	0.2	23.1
Other and not stated(a)	6.3	10.9	24.2	19.0	15.3	10.8	6.5	93.0
Total	86.5	156.8	323.6	228.6	208.6	160.3	110.2	1 274.4

(a) Includes 'Exhibition' from July 1998.

Visitor departures During the December quarter 1999, 1,169,900 overseas visitors departed Australia (refer to table 34). This is a 9% increase (926,000) on the corresponding 1998 period. New South Wales and Queensland remain the States in which visitors spend most time (41% and 29% respectively). New South Wales was the predominant State of stay for visitors from most countries with the exception of those from Malaysia, Singapore, Japan and Taiwan. Malaysian visitors spent more time in Victoria, those visitors from Singapore spent more time in Western Australia with Japanese and Taiwanese visitors spending more time in Queensland.

<i>Country of residence</i>	<i>State or Territory in which most time was spent</i>								
	<i>NSW</i>	<i>Vic.</i>	<i>Qld</i>	<i>SA</i>	<i>WA</i>	<i>Tas.</i>	<i>NT</i>	<i>ACT</i>	<i>Aust.(a)</i>
	<i>'000</i>	<i>'000</i>	<i>'000</i>	<i>'000</i>	<i>'000</i>	<i>'000</i>	<i>'000</i>	<i>'000</i>	<i>'000</i>
<i>Oceania and Antarctica</i>									
New Zealand	69.3	38.8	62.9	4.6	6.9	1.3	0.9	1.6	186.4
Other	14.2	3.2	17.5	0.3	0.1	0.2	0.1	0.5	36.1
<i>Total</i>	<i>83.5</i>	<i>42.1</i>	<i>80.4</i>	<i>4.9</i>	<i>7.0</i>	<i>1.5</i>	<i>1.0</i>	<i>2.1</i>	<i>222.5</i>
<i>Europe and the former USSR</i>									
France	5.7	1.7	3.2	0.2	1.1	0.2	0.6	0.2	12.9
Germany	15.3	5.5	12.0	1.4	3.7	0.2	1.6	0.3	40.2
Italy	4.7	2.3	2.2	0.3	1.3	0.0	0.3	0.1	11.3
Netherlands	5.6	2.2	4.9	0.4	1.7	0.1	0.9	0.1	15.9
Switzerland	4.8	1.4	3.8	0.4	2.1	0.1	0.3	0.0	12.9
United Kingdom	52.3	16.0	32.4	4.8	21.7	1.1	2.4	1.2	131.8
Other	24.7	7.6	11.4	1.4	4.2	0.4	1.0	0.5	51.2
<i>Total</i>	<i>113.1</i>	<i>36.6</i>	<i>69.9</i>	<i>8.9</i>	<i>35.8</i>	<i>2.1</i>	<i>7.1</i>	<i>2.4</i>	<i>276.2</i>
<i>Middle East and North Africa</i>									
<i>Total</i>	<i>4.1</i>	<i>2.3</i>	<i>1.4</i>	<i>0.1</i>	<i>0.4</i>	<i>0.0</i>	<i>0.0</i>	<i>0.1</i>	<i>8.4</i>
<i>Southeast Asia</i>									
Indonesia	7.3	5.6	2.1	0.7	6.4	0.1	1.1	0.3	23.7
Malaysia	10.4	11.3	7.4	2.1	10.6	0.5	0.2	0.2	42.8
Singapore	21.1	17.8	27.2	3.1	23.9	1.9	0.6	0.5	96.2
Thailand	8.9	3.9	2.7	0.3	2.3	0.1	0.1	0.2	18.4
Other	6.1	2.5	2.8	0.2	1.6	0.0	0.2	0.3	13.7
<i>Total</i>	<i>53.9</i>	<i>41.2</i>	<i>42.1</i>	<i>6.3</i>	<i>44.8</i>	<i>2.6</i>	<i>2.2</i>	<i>1.6</i>	<i>194.7</i>
<i>Northeast Asia</i>									
China	18.4	7.7	7.3	0.6	1.9	0.0	0.1	0.3	36.4
Hong Kong (SAR of China)	13.5	7.0	9.3	1.0	1.8	0.1	0.0	0.2	32.9
Japan	65.1	11.3	76.8	1.3	9.3	0.6	0.7	0.9	166.7
Korea	23.6	1.6	7.6	0.1	0.6	0.2	0.0	0.2	33.9
Taiwan	12.2	2.6	13.5	0.4	1.3	0.1	0.0	0.2	30.4
Other	0.2	0.2	0.1	0.0	0.1	0.0	0.0	0.0	0.5
<i>Total</i>	<i>133.1</i>	<i>30.4</i>	<i>114.6</i>	<i>3.4</i>	<i>15.0</i>	<i>1.0</i>	<i>0.8</i>	<i>1.8</i>	<i>300.8</i>
<i>Southern Asia</i>									
<i>Total</i>	<i>5.2</i>	<i>3.5</i>	<i>1.8</i>	<i>0.2</i>	<i>1.4</i>	<i>0.0</i>	<i>0.0</i>	<i>0.3</i>	<i>12.5</i>
<i>The Americas</i>									
Canada	9.2	3.1	4.3	0.8	1.5	0.2	0.5	0.4	20.0
United States of America	63.0	15.4	16.9	2.3	4.5	1.3	1.3	0.6	105.4
Other	5.1	0.9	1.0	0.2	0.3	0.1	0.1	0.1	7.8
<i>Total</i>	<i>77.3</i>	<i>19.4</i>	<i>22.3</i>	<i>3.3</i>	<i>6.3</i>	<i>1.6</i>	<i>1.8</i>	<i>1.1</i>	<i>133.2</i>
<i>Africa</i>									
<i>Total</i>	<i>7.7</i>	<i>2.3</i>	<i>2.5</i>	<i>0.5</i>	<i>4.1</i>	<i>0.1</i>	<i>0.2</i>	<i>0.3</i>	<i>17.6</i>
<i>Not stated</i>	<i>2.1</i>	<i>0.6</i>	<i>0.9</i>	<i>0.0</i>	<i>0.2</i>	<i>0.0</i>	<i>0.0</i>	<i>0.0</i>	<i>3.9</i>
Total	480.1	178.4	335.7	27.6	115.0	9.0	13.3	9.5	1 169.9

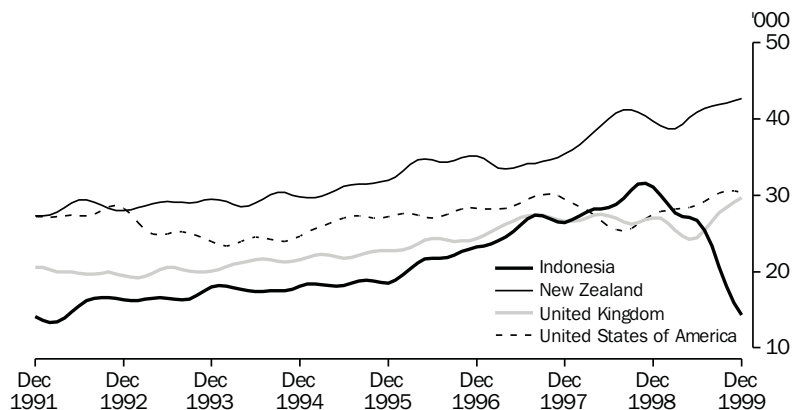
(a) Includes 'Other Territories' and 'Not stated'.

DEPARTURES OF
AUSTRALIAN RESIDENTS

There were 815,600 Australian resident departures for short-term trips overseas during the December quarter 1999. This was a decrease of 3% (27,000) on the December quarter 1998, and a decrease of 9% (82,800) on the September quarter 1999. In trend terms, this corresponded to a 1% decrease on the September quarter 1998.

The main driving force behind the overall decline in departures was the reduced number of Australians travelling to Indonesia as a result of events in East Timor. The trend estimate for departures to Indonesia fell considerably since December 1998 to 14,300 in December 1999, reflecting a 54% decline during this period. The three other key destinations continued to show strong growth. The trend estimate for Australian resident monthly departures to NZ (the most popular destination) have steadily increased for the past nine months to 42,700 in December 1999 and is now at its highest level. Since June 1999, departures to the UK have increased steadily to reach 29,700 in December 1999, a new high. Visitors to the USA peaked at 30,600 departures for the months of October and November 1999 with December 1999 departures declining slightly to 30,400.

OVERSEAS DEPARTURES, Australian residents: **Trend**



In original terms, the most popular destinations for Australian residents departing (refer to table 35) during the December 1999 quarter were NZ (18% or 143,200 departures), the USA (12% or 94,200), the UK (9% or 70,400), and Indonesia (6% or 45,000). In the December quarter 1998, Indonesia had been the second most popular destination accounting for 12% of all departures.

Purpose of journey

In the December quarter 1999, over 44% (362,900) of all departures by Australian residents were for holiday purposes, compared with 28% (231,700) to visit friends and relatives and 15% (122,100) for business purposes (refer to table 36). The most popular destination for holiday makers was NZ with 14% (51,800) departures. The USA was the next most popular destination with 12% (115,700). Of the 231,700 Australian residents departing to visit friends and relatives, NZ (23% or 53,500), the UK (12% or 27,700) and the USA (8% or 17,800) were the most popular destinations.

Purpose of journey *continued* New Zealand was also the most frequented destination for business travel, accounting for 20% (24,200) of the 122,100 business departures followed by the USA with 13% (15,800). The reverse occurred for convention travel with the USA being the most popular destination, accounting for 35% (9,900) of the 28,300 departures for this purpose, while NZ accounted for 14% (4,100).

Length of stay Australian residents departing for overseas during the December quarter 1999 intended to stay in excess of 27 million person days abroad (refer to table 37), reflecting a 2% increase on the December quarter 1998. Australian visitors intended to spend 4.0 million days (15%) in the UK, 2.9 million days (11%) in the USA and 2.6 million days (9%) in NZ.

Australian residents intended to spend on average 57 days visiting the UK, with visitors to the USA intending to stay 31 days. Visitors to Indonesia planned to stay 21 days while those visiting New Zealand planned to stay for 18 days.

Country of intended stay	<i>Original</i>				Change over Dec qtr 1998	Proportion of total visitors	Median intended length of stay	Person days
	Oct	Nov	Dec	Dec qtr 1999				
	'000	'000	'000	'000	%	%	days	'000
Oceania and Antarctica								
Fiji	8.5	8.3	9.5	26.3	1.1	3.2	10.4	449.6
New Zealand	35.1	44.1	64.1	143.2	5.1	17.6	12.2	2 553.2
Other	14.8	13.6	16.4	44.9	1.1	5.5	10.7	1 052.6
<i>Total</i>	58.4	65.9	90.0	214.4	3.7	26.3	11.1	4 055.5
Europe and the former USSR								
France	2.6	2.7	4.0	9.3	1.0	1.1	23.2	306.7
Germany	3.3	2.5	2.3	8.1	-10.1	1.0	30.2	339.9
Greece	1.9	1.4	1.6	4.9	10.0	0.6	40.8	323.0
Italy	4.2	3.5	3.7	11.3	12.0	1.4	30.2	430.0
United Kingdom	23.4	19.3	27.7	70.4	7.4	8.6	30.5	4 028.7
Other	12.3	9.7	14.0	36.0	10.7	4.4	30.6	1 825.1
<i>Total</i>	47.6	39.1	53.2	139.9	7.0	17.2	30.5	7 253.5
Middle East and North Africa								
<i>Total</i>	4.0	5.4	6.2	15.6	-11.5	1.9	42.9	1 032.0
Southeast Asia								
Indonesia	17.9	10.2	16.8	45.0	-54.3	5.5	10.8	942.6
Malaysia	13.2	8.2	12.1	33.4	9.0	4.1	13.0	945.0
Philippines	5.4	4.8	6.4	16.6	-2.5	2.0	23.5	595.7
Singapore	11.5	10.7	9.3	31.5	-1.9	3.9	10.1	798.2
Thailand	15.8	13.7	10.4	39.9	0.5	4.9	12.8	676.4
Viet Nam	3.2	3.1	6.6	12.8	-19.0	1.6	30.4	539.8
Other	1.2	1.4	1.7	4.4	19.5	0.5	30.5	227.6
<i>Total</i>	68.2	52.2	63.2	183.6	-22.6	22.5	13.0	4 725.2
Northeast Asia								
China	7.9	7.1	8.2	23.2	-1.1	2.8	20.9	821.9
Hong Kong (SAR of China)	11.2	11.8	17.1	40.1	-10.2	4.9	20.8	1 720.0
Japan	5.6	5.9	4.9	16.4	6.0	2.0	13.5	536.7
Other	4.5	4.5	6.5	15.5	2.6	1.9	30.6	747.8
<i>Total</i>	29.2	29.3	36.7	95.1	-3.5	11.7	20.9	3 826.4
Southern Asia								
India	4.5	6.4	6.4	17.3	2.8	2.1	30.8	801.5
Other	3.7	5.2	5.5	14.4	32.9	1.8	30.4	610.6
<i>Total</i>	8.2	11.5	11.9	31.7	14.6	3.9	30.6	1 412.1
The Americas								
Canada	2.6	2.7	6.4	11.6	5.7	1.4	30.3	589.8
United States of America	35.0	28.9	30.4	94.2	11.3	11.6	18.2	2 918.1
Other	3.0	3.8	3.5	10.3	-4.4	1.3	40.3	625.1
<i>Total</i>	40.5	35.3	40.4	116.1	9.1	14.2	21.2	4 133.0
Africa (excluding North Africa)								
<i>Total</i>	4.8	4.7	5.2	14.6	4.6	1.8	29.2	582.1
<i>Other and not stated</i>	1.0	1.0	2.6	4.6	32.0	0.6	14.8	142.2
Total	262.0	244.4	309.3	815.6	-3.2	100.0	17.4	27 162.0

Country of intended stay	Main purpose of journey							Total
	Convention/ conference	Business	Visiting friends/ relatives	Holiday	Employment	Education	Other and not stated	
	'000	'000	'000	'000	'000	'000	'000	'000
Oceania and Antarctica								
Fiji	0.2	2.2	3.6	18.5	0.2	0.4	1.2	26.3
New Zealand	4.1	24.2	53.5	51.8	1.1	0.8	7.8	143.2
Other	0.4	4.7	6.6	23.9	5.3	0.9	3.1	44.9
<i>Total</i>	4.7	31.1	63.7	94.2	6.6	2.1	12.0	214.4
Europe and the former USSR								
France	0.7	1.4	1.5	4.8	0.1	0.6	0.1	9.3
Germany	0.3	2.2	3.1	1.7	0.1	0.4	0.3	8.1
Greece	0.2	0.1	2.0	2.0	0.1	0.0	0.6	4.9
Italy	0.6	1.2	2.5	6.3	0.0	0.5	0.2	11.3
United Kingdom	2.0	7.1	27.7	29.3	1.6	0.4	2.4	70.4
Other	1.6	3.9	16.7	11.2	0.6	0.4	1.5	36.0
<i>Total</i>	5.3	15.9	53.5	55.3	2.6	2.3	5.1	139.9
Middle East and North Africa								
<i>Total</i>	0.4	1.3	5.9	5.7	0.6	0.3	1.3	15.6
Southeast Asia								
Indonesia	0.2	4.8	3.7	33.2	1.2	0.1	1.8	45.0
Malaysia	0.3	5.0	7.8	18.0	0.8	0.3	1.2	33.4
Philippines	0.1	2.4	7.9	4.8	0.2	0.1	1.0	16.6
Singapore	0.7	9.7	5.9	12.1	1.0	0.5	1.6	31.6
Thailand	1.3	3.7	2.9	30.4	0.2	0.0	1.5	39.9
Viet Nam	0.3	0.8	7.2	3.9	0.1	0.0	0.5	12.9
Other	0.0	0.7	1.5	1.4	0.3	0.1	0.4	4.4
<i>Total</i>	2.9	27.2	36.9	103.7	4.0	1.1	7.9	183.6
Northeast Asia								
China	1.3	6.1	6.5	6.6	0.6	0.4	1.7	23.2
Hong Kong (SAR of China)	1.2	8.3	13.4	14.0	1.8	0.2	1.3	40.1
Japan	0.9	5.8	2.5	4.8	0.3	1.1	1.0	16.4
Other	0.2	4.1	6.2	3.3	0.5	0.2	1.0	15.4
<i>Total</i>	3.5	24.4	28.6	28.7	3.1	1.9	5.0	95.1
Southern Asia								
India	0.4	1.4	6.9	7.5	0.2	0.2	0.7	17.3
Other	0.1	1.0	5.3	6.8	0.1	0.2	1.1	14.4
<i>Total</i>	0.5	2.4	12.2	14.3	0.3	0.4	1.7	31.7
The Americas								
Canada	0.5	0.9	3.8	5.5	0.2	0.2	0.6	11.6
United States of America	9.9	15.8	17.8	44.6	2.1	0.9	3.1	94.2
Other	0.2	0.6	4.1	4.4	0.2	0.2	0.6	10.3
<i>Total</i>	10.5	17.3	25.7	54.6	2.6	1.2	4.3	116.1
Africa (excluding North Africa)								
<i>Total</i>	0.5	2.6	5.4	4.5	0.2	0.1	1.3	14.6
<i>Other and not stated</i>	0.1	0.0	0.0	1.9	0.1	0.0	2.6	4.6
Total	28.3	122.1	231.7	362.9	19.8	9.5	41.2	815.6

Country of intended stay	Main purpose of journey in person days							Total
	Convention/ conference	Business	Visiting friends/ relatives	Holiday	Employment	Education	Other and not stated	
	'000	'000	'000	'000	'000	'000	'000	'000
Oceania and Antarctica								
Fiji	2.5	35.9	104.3	236.5	9.8	11.5	49.1	449.6
New Zealand	32.9	223.5	1 078.8	944.7	120.9	22.9	129.6	2 553.2
Other	1.9	82.4	242.5	326.7	278.3	46.4	74.5	1 052.6
<i>Total</i>	37.3	341.8	1 425.6	1 507.9	409.0	80.8	253.2	4 055.5
Europe and the former USSR								
France	11.3	30.4	53.5	161.5	10.7	32.0	7.3	306.7
Germany	2.8	51.3	163.0	67.3	20.5	20.4	14.8	339.9
Greece	3.8	12.7	151.7	113.5	9.7	0.7	31.0	323.0
Italy	11.1	22.5	127.8	221.4	8.0	27.5	11.6	430.0
United Kingdom	44.3	192.6	1 299.8	1 914.4	361.2	43.9	172.6	4 028.7
Other	19.7	114.9	906.0	590.0	71.0	55.0	68.5	1 825.1
<i>Total</i>	93.1	424.4	2 701.7	3 068.0	481.1	179.6	305.8	7 253.5
Middle East and North Africa								
<i>Total</i>	8.2	27.0	408.1	278.7	136.8	35.1	138.2	1 032.0
Southeast Asia								
Indonesia	1.5	159.0	143.0	446.5	59.3	13.7	119.6	942.6
Malaysia	2.3	146.1	302.3	325.9	85.5	5.9	77.0	945.0
Philippines	0.7	61.1	320.4	157.8	20.4	6.7	28.8	595.7
Singapore	4.6	140.4	225.7	173.4	135.4	37.4	81.4	798.2
Thailand	12.0	42.2	89.7	470.9	22.0	2.8	36.7	676.4
Viet Nam	4.3	36.9	342.7	123.2	11.6	1.1	19.9	539.8
Other	0.0	12.7	71.7	54.7	55.2	6.4	26.9	227.6
<i>Total</i>	25.4	598.3	1 495.5	1 752.4	389.5	74.0	390.2	4 725.2
Northeast Asia								
China	14.0	138.8	320.6	206.5	59.2	17.7	65.2	822.0
Hong Kong (SAR of China)	13.0	252.9	619.5	477.8	262.3	8.1	86.3	1 720.0
Japan	7.7	112.2	73.8	147.9	88.0	60.0	47.0	536.7
Other	1.4	144.0	331.4	159.8	36.1	14.9	60.2	747.8
<i>Total</i>	36.1	647.9	1 345.3	992.0	445.6	100.8	258.7	3 826.4
Southern Asia								
India	5.0	32.0	335.4	351.5	20.2	27.1	30.2	801.5
Other	7.5	27.4	276.1	220.4	8.3	3.5	67.4	610.6
<i>Total</i>	12.5	59.5	611.5	571.9	28.5	30.7	97.6	1 412.1
The Americas								
Canada	10.1	17.1	154.3	293.9	58.2	25.6	30.7	589.8
United States of America	133.1	382.5	775.1	1 141.9	305.1	76.5	103.7	2 918.1
Other	4.3	29.9	240.0	255.9	55.4	11.6	27.9	625.1
<i>Total</i>	147.6	429.5	1 169.4	1 691.8	418.7	113.7	162.3	4 133.0
Africa (excluding North Africa)								
<i>Total</i>	7.4	76.7	240.8	173.5	30.5	6.4	46.8	582.1
<i>Other and not stated</i>	2.4	0.0	0.0	52.3	3.2	0.0	84.4	142.2
Total	369.8	2 605.0	9 397.8	10 088.5	2 342.9	621.0	1 737.0	27 162.0

Country of intended stay	1999											
	Jan	Feb	Mar	Apr	May	Jun	Jul	Aug	Sep	Oct	Nov	Dec
	'000	'000	'000	'000	'000	'000	'001	'002	'003	'004	'005	'006
ORIGINAL												
Fiji	7.5	4.3	8.4	9.8	10.5	11.4	12.8	10.5	13.8	8.5	8.3	9.5
Hong Kong (SAR of China)	12.4	10.1	11.6	12.2	10.6	11.5	10.5	11.7	13.2	11.2	11.8	17.1
Indonesia	29	21.3	24.1	22	23.1	24.2	35	30.6	26.3	17.9	10.2	16.8
Italy	2.1	2.7	5.1	5.9	8	9.1	6	5.9	8	4.2	3.5	3.7
Malaysia	8.6	6.9	9.2	10.6	7.6	9.6	11.9	10.2	11.8	13.2	8.2	12.1
New Zealand	38.4	37.9	45.3	40.4	30.9	29	38.7	39.2	46	35.1	44	64.1
Singapore	11.5	10.2	14.2	10.6	9.9	13.2	12.9	12.4	14.4	11.5	10.7	9.3
Thailand	10.8	8.3	11.5	8.4	10.1	10.3	12.7	11.3	13.7	15.8	13.7	10.4
United Kingdom	13.5	16	21.9	22	36.2	34.1	26.8	36.7	35.2	23.3	19.3	27.7
United States of America	24.6	19.5	27.1	27.6	28.9	31.5	28.4	28.2	37	35	28.9	30.4
Other and not stated	74.4	61.4	90.5	74.7	86.7	105.3	90.9	84.4	111.2	86.3	85.7	108.2
Total	232.7	198.5	268.9	244.3	262.4	289.2	286.6	281.1	330.7	262	244.3	309.3
SEASONALLY ADJUSTED												
Fiji	8.4	7.2	8.9	9.8	11.6	9.9	11.3	10.6	11.9	8.5	8.9	7.4
Hong Kong (SAR of China)	13.2	10.2	11.1	12.2	12.6	11.7	12.9	14.1	12.6	12.7	10.5	11.6
Indonesia	31.2	29.1	26.9	26.1	27.4	23.6	28.8	28.5	19.4	14.7	10.9	19
Italy	5.6	6.4	5.7	5.4	5.2	6.7	4.4	5	4.5	5.6	7.4	4.6
Malaysia	8.3	9	10.1	12.1	8.8	9.7	10.1	11.7	10.2	12.6	8.9	9.3
New Zealand	38.9	37.7	40.5	37.9	39.4	39.9	44.1	44.6	39.3	36.7	47.9	42.3
Singapore	11.5	11.9	12.9	11.4	11.3	12.9	11.9	12.6	13.4	10.6	10.8	9.5
Thailand	11.1	9.4	11.2	9.4	10.9	10.3	12.6	13.9	12	13.5	13.7	9.4
United Kingdom	26.3	31.4	24.2	22.4	24.1	24.4	20.4	35.2	25.5	26	29.9	30.2
United States of America	27.1	27.8	28.1	29.9	27.7	27.7	30.1	29.7	27.4	33.8	34.3	25.3
Other and not stated	96.2	88.3	93.1	83.3	77.7	90.4	83	91.5	93.7	101.8	88.1	81.1
Total	277.7	268.4	272.7	260	256.7	267.1	269.7	297.3	269.7	276.4	271.5	249.8
TREND												
Fiji	8.1	8.5	9	9.7	10.3	10.9	11	10.7	10.2	9.6	8.9	8.3
Hong Kong (SAR of China)	12.2	11.9	11.7	11.7	12.1	12.6	12.9	12.9	12.6	12.3	11.9	11.6
Indonesia	30	28.8	27.7	27.2	27.1	26.7	25.4	23.3	20.7	18.1	15.9	14.3
Italy	5.5	5.6	5.8	5.8	5.5	5.3	5.2	5.2	5.3	5.4	5.6	5.7
Malaysia	9.2	9.4	9.7	9.9	10.2	10.4	10.5	10.6	10.7	10.6	10.4	10
New Zealand	39.1	38.7	38.7	39.3	40.2	40.9	41.4	41.7	41.9	42.1	42.4	42.7
Singapore	11.4	11.7	11.9	12	12.2	12.3	12.4	12.3	11.9	11.4	10.9	10.3
Thailand	10.8	10.3	10.1	10.3	10.7	11.4	12.1	12.6	12.8	12.7	12.4	12
United Kingdom	27	26.3	25.4	24.6	24.2	24.4	25.4	26.6	27.7	28.4	29.1	29.7
United States of America	27.9	28	28.2	28.3	28.4	28.7	29.2	29.8	30.3	30.6	30.6	30.4
Other and not stated	89.6	89	87.7	86	85.1	85.8	88	90.4	91.9	92.1	91.2	89.3
Total	270.8	268.3	265.8	264.8	266	269.4	273.4	276.2	276.1	273.4	269.2	264.1

EXPLANATORY NOTES

INTRODUCTION

1 This publication brings together domestic tourism data from a number of sources, including previously unpublished data from the quarterly Survey of Tourist Accommodation (STA) and the Overseas Arrivals and Departures (OAD) Collection.

TOURIST ACCOMMODATION

2 The series of tables and graphs in the tourist accommodation section of this publication contain statistics for Australia and each State and Territory. Statistics in this publication are the latest available for the December quarter 1999.

SCOPE AND COVERAGE

3 Tourist accommodation establishments included in the STA, are hotels, motels and guest houses with facilities; and serviced apartments which are available to the general public for a minimum of one night.

4 Data collected and published relate to both long-term and short-term guests at hotels, motels and guest houses, but only short-term guests at serviced apartments. For hotels, motels and guest houses the amount of long-term residential activity is considered insignificant. This activity is included in the data presented.

5 As a result of the separate classification of serviced apartments from the March quarter 1998, there have been several changes to definitions of accommodation units. Some units which were previously classified as hotels, motels or holiday flats have been reclassified to serviced apartments. A small number of establishments previously classified as motels, have been reclassified as holiday flats, units or houses, and are no longer in scope of the quarterly STA.

6 From the March quarter 1998, only those in-scope establishments with 15 or more rooms or units are covered by the survey. Data for the 1997 calendar year have been recompiled on the new basis. Data for time periods prior to 1997 have been recompiled to only include accommodation establishments with 15 or more rooms, but have not been recompiled to reflect the inclusion of serviced apartments as a separate classification. This means that data for periods prior to the March quarter 1997 reflect the old classification and only include hotels, motels and guest houses. It should be noted that some serviced apartments may have been included in STA estimates prior to the March quarter 1997, as they may previously have been classified as hotels or motels, as outlined in paragraph 5 above.

7 As a result of the changes to the scope and classification of accommodation establishments there is a break in all time series between the December quarter 1996 and the March quarter 1997.

ESTIMATES AT CONSTANT
PRICES

8 Estimates of quarterly takings from accommodation contained in this publication are also expressed in terms of average 1989–90 prices (constant prices). These estimates are presented in original, seasonally adjusted and trend terms, for Australia and each State and Territory. (Note: monthly data at constant prices are not available.)

9 Takings from accommodation for each State and Territory have been deflated using the All Groups Consumer Price Index (CPI) for the relevant capital city. The CPI has been used as it is a measure of the general extent of price change (inflation) in the economy. (Note: the CPI is only produced for capital cities.) As an example, an increase of 10% in the New South Wales takings from accommodation at 1989–90 prices over a period would mean that New South Wales takings from accommodation increased 10% more than the Sydney CPI over that period, implying that takings from accommodation in New South Wales increased 10% more than inflation.

10 General information on price deflators and constant price estimates is contained in section 4 of *Australian National Accounts: Concepts, Sources and Methods, 1989* (ABS Cat. no. 5216.0).

INTERNATIONAL TOURISM

11 The series of tables and graphs in the international tourism section of this publication contain statistics on short-term visitors arriving in or departing from Australia, and departures of Australian residents for short-term trips abroad. Short-term movement relates to an intended length of stay of less than 12 months.

SOURCE OF THE STATISTICS

12 Persons arriving in, or departing from Australia, are required to complete prescribed questionnaires in the form of Incoming and Outgoing Passenger Cards. These cards provide information to the Department of Immigration and Multicultural Affairs (DIMA) for administrative purposes and serve as the source of statistics of overseas arrivals and departures. In accordance with the *Census and Statistics Act 1905* (Cwlth), information relating to individuals, individual flights or ships and individual carriers, which is contained in these cards or other documents, is treated as confidential by the Australian Bureau of Statistics (ABS).

13 Implementation of the *Migration Reform Act 1992* (Cwlth) by DIMA required that a health and character check be incorporated with the Incoming Passenger Card. The redesign of both passenger cards followed and new passenger cards were officially introduced on 1 September 1994. The main statistical change relating to data in this publication affects the purpose of journey classification and constitutes a break in time series for this data item.

SOURCE OF THE STATISTICS <i>continued</i>	14 From July 1998 there have been changes to passenger cards completed by travellers entering and leaving Australia, as well as to international passenger procedures and DIMA computer systems. Please refer to the May issue of <i>Overseas Arrivals and Departures, Australia</i> (ABS Cat. no. 3401.0).
SCOPE	15 The statistics in this publication relate to the number of movements of travellers rather than the number of travellers (i.e. the multiple movements of individual persons during a given reference period are each counted separately). The statistics exclude the movements of operational air and ships' crew, of transit passengers who pass through Australia but are not cleared for entry, and of passengers on pleasure cruises commencing and finishing in Australia aboard ships not then engaged on regular voyages.
ESTIMATION METHOD	16 Overseas arrival and departure statistics are derived from a combination of full enumeration and sampling. All movements with a duration of stay of less than one year are sampled. Statistics relating to these movements are therefore estimates, which may differ from statistics which would have been obtained if details of all these movements had been processed.
CORRECTIONS AND IMPUTATIONS	17 Imprecision due to sampling errors should not be confused with errors arising from imperfections in reporting, which may occur in any data collection, whether sampled or not. Every effort is made to minimise such errors, by careful design of the passenger cards and through checks on the information once it is received. During the edit process some items are corrected where they conflict with other known information. Missing replies to certain items such as age are also imputed by reference to other related items. 18 Errors of this kind differ from discrepancies arising from the fact that certain information reflects the travellers' intentions, at the time the passenger cards were completed. These intentions are, of course, subject to change. Particularly affected is the distinction between permanent and temporary movement and in the latter case, length of intended stay, country in which most time will be spent, and purpose of journey.
SEASONAL ADJUSTMENTS	19 Seasonally adjusted and trend estimates are shown in various graphs and tables throughout this publication. In these series, account has been taken of normal seasonal factors, 'trading day' effects (arising from the varying number of Sundays, Mondays, Tuesdays etc. in the month) and the effect of movement in the date of Easter which may, in successive years, affect figures for the months of March and April. Details of the methods used in seasonally adjusting the series from the STA and OAD collections are available on request.

SEASONAL ADJUSTMENTS

continued

20 Seasonal adjustment is a means of removing the estimated effects of normal seasonal variation from the series so that the effect of other influences on the series may be more clearly recognised. Seasonal adjustment procedures do not aim to remove the irregular or non-seasonal influences which may be present in any particular month. Irregular influences that are highly volatile can make it difficult to interpret the movement of the series even after adjustment for seasonal variation, and cannot be assumed to indicate changes in the trend.

21 As happens with all seasonally adjusted series, the seasonal factors are reviewed annually to take account of each additional year's data. For the Survey of Tourist Accommodation, the results of the latest review are shown in the March quarter issue of this publication. For the Overseas Arrivals and Departures series, the results of the latest review of seasonal factors are shown in the September quarter issue.

TREND ESTIMATES

22 Smoothing seasonally adjusted series reduces the impact of the irregular component of the seasonally adjusted series and creates the trend estimates. The trend estimates are derived by applying a 13-term weighted moving average to the monthly and a 7-term Henderson moving average to the quarterly seasonally adjusted series. The 7- and 13-term Henderson averages (like all Henderson averages) are symmetric but, as the end of a time series is approached, asymmetric forms of the average are applied. Unlike the weights of the standard 7-term Henderson moving average, the weights employed with the quarterly data have been tailored to suit the particular characteristics of individual series.

23 While these techniques enable smoothed data for the latest period to be produced, it does result in revisions to the smoothed series, principally of recent months, as additional observations become available. There may also be revisions as a result of the re-estimation of the seasonal factors. For further information refer to, *A Guide to Interpreting Time Series—Monitoring Trends, an Overview, 1993* (ABS Cat. no. 1348.0), or contact the Assistant Director, Time Series Analysis on Canberra 02 6252 6345.

RELATED PUBLICATIONS

24 Comprehensive definitions and explanations, and detailed data are contained in the publications below, which can be obtained from ABS Bookshops or by mail order:

Consumer Price Index (ABS Cat. no. 6401.0)—issued quarterly

Directory of Tourism Statistics, 1997 (ABS Cat. no. 1130.0)—irregular

Overseas Arrivals and Departures, Australia (ABS Cat. no. 3401.0)—issued monthly

Migration, Australia (ABS Cat. no. 3412.0)—issued annually

Tourist Accommodation, Australia (ABS Cat. no. 8635.0)—issued quarterly

Tourist accommodation small area data for each State and the Northern Territory—issued quarterly

25 Current publications produced by the ABS are listed in the *Catalogue of Publications and Products* (ABS Cat. no. 1101.0). The ABS also issues on Tuesdays and Fridays, a *Release Advice* (ABS Cat. no. 1105.0) which lists publications to be released in the next few days. Both are available from any ABS office or the ABS web site.

26 Related statistics are also published by the Bureau of Tourism Research, DIMA and the Department of Transport and Regional Services.

ADDITIONAL STATISTICS AVAILABLE

27 As well as the statistics included in this and related publications, the ABS can make available information which is not published. Generally a charge is made for providing unpublished information.

ROUNDING

28 Where figures have been rounded, discrepancies may occur between sums of the component items and totals.

APPENDIX**FEATURE ARTICLES PUBLISHED IN TOURISM INDICATORS**

<i>Issue</i>	<i>Article title</i>	<i>Page</i>
December quarter 1999	Tourist Accommodation Developments	7–8
December quarter 1999	Survey of Tourist Accommodation—Annual comparisons	9–10
September quarter 1999	Retirement And Near Retirement: Short Term Resident Departures	8–9
June quarter 1999	Counts of Accommodation Establishments	8–12
June quarter 1999	Caravans and Campervans	13–14
March quarter 1999	Accommodation Industry Survey—1997–98	7–8
December quarter 1998	Tourist accommodation developments	7
December quarter 1998	Profile of resident departures, 1998	8–11
December quarter 1998	Use of IT by the Accommodation, cafes and restaurants industry	12–13
December quarter 1998	Employment in accommodation establishments	14–15
September quarter 1998	International tourism profile: New Zealand	7–11
September quarter 1998	The Year 2000 problem and the accommodation industry	12–13
September quarter 1998	Economic activity of large accommodation businesses, 1993–94 and 1996–97	14–15
June quarter 1998	Serviced apartments in Australian accommodation	8–11
March quarter 1998	The introduction of tourism region classification to the survey of tourist accommodation	10–11
March quarter 1998	Travel agency services	12
December quarter 1997	Downturn in Asian visitor arrivals	4
December quarter 1997	Tourist accommodation developments	5
December quarter 1997	Overseas tourism marketing expenditure	6
September quarter 1997	Inclusion of serviced apartments in Survey of Tourist Accommodation	4
September quarter 1997	Business expectations	5
September quarter 1997	Cultural tourism	6

<i>Issue</i>	<i>Article title</i>	<i>Page</i>
June quarter 1997	Accommodation Industry survey	4
June quarter 1997	Caravanning—A decade of change	5–6
March quarter 1997	Business Longitudinal survey	5–6
December quarter 1996	Information technology usage by accommodation establishments	4–5
December quarter 1996	Tourist accommodation, 1996	6
September quarter 1996	Clubs, pubs, taverns and bars	4–6
June quarter 1996	Profitability and business performance: Accommodation, cafes and restaurants	4–5
June quarter 1996	Survey of inbound tour operators	6
March quarter 1996	The origins of guests survey	5–7
March quarter 1996	The survey of tourist accommodation developments	8

GLOSSARY

Average length of stay	Average length of stay is expressed in numbers of days and calculated: <ul style="list-style-type: none">■ for hotels, motels and guest houses, by dividing guest nights by guest arrivals; and■ for serviced apartments, by dividing units nights occupied by unit lettings.
Average nightly guests per occupied room	Guest nights divided by room nights occupied.
Average nightly rooms occupied per establishment	The average number of rooms per establishment multiplied by the occupancy rate for the survey period.
Average takings per establishment	The takings from accommodation for the survey period divided by the number of establishments at the end of the survey period.
Average takings per guest night	The takings from accommodation divided by the total number of guest nights for the survey period.
Average takings per room night available	The takings from accommodation divided by the total room nights available for the survey period.
Average takings per room night occupied	The takings from accommodation divided by the total number of room nights occupied for the survey period.
Capacity	Capacity in terms of guest rooms/units or bed spaces is the maximum number available to accommodate paying guests during the survey period. Capacity closed temporarily for seasonal reasons is included.
Country of intended stay	For Australian residents travelling abroad for short-term trips, this relates to the country in which they intend to spend the most time.
Country of residence	Refers to the country in which short-term visitors regard themselves as living or as last having lived. The classification of countries in this publication is based on the Standard Australian Classification of Countries. For more detailed information, refer to <i>Standard Australian Classification of Countries (SACC), 1998</i> (ABS Cat. no. 1269.0).
Establishments	All hotels, motels, guest houses and serviced apartments within the scope of the survey which operated for any part of the survey period, or which closed temporarily for the quarter for seasonal reasons.
Guest nights	The total number of paying guests counted on each night they stayed at the accommodation establishment.

Guest rooms	The maximum number of rooms available at each establishment during the survey period for accommodating short-term paying guests. Units and apartments within serviced apartments are treated as rooms in these survey results.
Median length of stay	Defined as the length of stay which divides the relevant population into two equal parts, one half of the cases falling below the median and the other half exceeding it.
Occupancy rate	Occupancy expressed as a percentage of total capacity available during the survey period, e.g. for the period. $\text{Room occupancy rate (\%)} = \frac{\text{Room nights occupied} \times 100}{(\text{Guest rooms}) \times (\text{no. of days in the period})}$
Person days	Defined as the number of short-term visitor arrivals or short-term resident departures multiplied by the intended length of stay for each visitor or resident.
Purpose of journey	From the September quarter 1994, all statistics relating to purpose of journey are published using the following categories: Convention/conference, Business, Visiting friends/relatives, Holiday, Employment, Education and Other. In tabulations of data collected before September 1994 quarter, the 'Other' category includes 'In transit', and the 'Holiday' category includes 'Student vacation' and 'Accompanying business visitor'.
Room nights available	The total of guest rooms/units available multiplied by the number of days for which each was available during the survey period.
Room nights occupied	The total number of nights each guest room/unit was occupied by a paying guest during the survey period.
Rooms per establishment	The average number of rooms/units per establishment.
Short-term movement	Movements of travellers whose intended or actual length of stay is less than 12 months are classified as short-term. The tables for visitor arrivals and resident departures in this publication relate to short-term movements only.
Star grading	The grading of hotels and motels with facilities and serviced apartments is based on the classification system used by members of the Australian Automobile Association (AAA). The gradings are allocated according to a points system based on the amenities and facilities available to guests. Details of the grading scheme are contained in the RACV-RAASA members' publication <i>Accommodation Australia</i> , or the individual tour guides produced by members of the AAA. For the purpose of classifying establishments to a star grading in this publication, 'half' star gradings are ignored (e.g. a two and a half star grading has been shown as a two star).

Takings from accommodation

Gross revenue from the provision of accommodation, including bed taxes. Takings from meals are excluded. Takings from accommodation for each month generally represent the takings received during that month. Where payments are received in advance of, or after, the provision of accommodation to guests, the monthly figure for takings from accommodation may not necessarily bear a direct relationship to the number of guests accommodated during the month.

FOR MORE INFORMATION...

- INTERNET** www.abs.gov.au the ABS web site is the best place to start for access to summary data from our latest publications, information about the ABS, advice about upcoming releases, our catalogue, and Australia Now—a statistical profile.
- LIBRARY** A range of ABS publications is available from public and tertiary libraries Australia-wide. Contact your nearest library to determine whether it has the ABS statistics you require, or visit our web site for a list of libraries.
- CPI INFOLINE** For current and historical Consumer Price Index data, call 1902 981 074 (call cost 75c per minute).
- DIAL-A-STATISTIC** For the latest figures for National Accounts, Balance of Payments, Labour Force, Average Weekly Earnings, Estimated Resident Population and the Consumer Price Index call 1900 986 400 (call cost 75c per minute).

INFORMATION SERVICE

Data which have been published and can be provided within five minutes are free of charge. Our information consultants can also help you to access the full range of ABS information—ABS user pays services can be tailored to your needs, time frame and budget. Publications may be purchased. Specialists are on hand to help you with analytical or methodological advice.

- PHONE** **1300 135 070**
- EMAIL** **client.services@abs.gov.au**
- FAX** 1300 135 211
- POST** Client Services, ABS, GPO Box 796, Sydney 1041

WHY NOT SUBSCRIBE?

ABS subscription services provide regular, convenient and prompt deliveries of ABS publications and products as they are released. Email delivery of monthly and quarterly publications is available.

- PHONE** 1300 366 323
- EMAIL** subscriptions@abs.gov.au
- FAX** 03 9615 7848
- POST** Subscription Services, ABS, GPO Box 2796Y, Melbourne 3001



2863400012992
ISSN 1321-4144

RRP \$24.00

© Commonwealth of Australia 2000

Produced by the Australian Bureau of Statistics